

# Tinsley Tribune

newsletter of Tinsley Forum

March 2007

Our aim is to improve the quality of life for all the people of Tinsley

## Whose rubbish is this?

**British Waterways are to clean it up from next week , lets look after our environment**

Tinsley Forum have had a lot of complaints about the rubbish on the canal bank. If it's local people who are dumping please think about your family and neighbours having to walk past this mess when walking to the tram stop or to Meadowhall. It's been bad for years. In the winter months when the foliage on the bank dies back it looks particularly bad. A lot of the rubbish seems to be household rubbish. Wheelie bins left on the pavement end up down the canal bank. It is also easy to lift rubbish from vehicles and throw it over the wall from Sheffield Road. After representations by Tinsley Forum, British Waterways who are responsible for the canal are to clean up the bank in the next few weeks. The developers currently building on Sheffield Road want to knock down the old Sauna on the corner of Wharf Road and make environmental improvements. Tinsley Forum working with British Waterways , Sheffield City Council and the Developers are keen to improve this important green area of Tinsley. Anybody caught dumping in this area is liable to a fine of up to £2000.



Rubbish on the canal bank Old Sheffield Road

## Local Bus issues

Back in December 06 a small group of residents from Tinsley and Tinsley Forum Workers and trustees attended a Bus meeting at the Sheffield Town Hall, representatives from First Bus Company and Sheffield City Council were present. A number of issues were raised about the bus service that operates through Tinsley. Some of the concerns raised were:

- No consultation about re-routing / times changes regarding the bus service.
- Buses at school peak times being full
- Would like more buses per hour serving St Lawrence Road (at least 2)
- Would like the bus to run to Meadowhall bus stop as before

The questions that were raised by the group were taken back to First and a promise was made to update on any recommendations made.

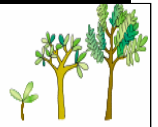
Anne Saleh from the Tinsley Forum and Nadeem Hussain, Khaizer Farooq recently attended an update meeting at the Sheffield Town Hall in March. Some recommendations had been made.

- The promise of better communication between First Buses and the Tinsley community.
- An additional bus in the morning to ease the problem of over full buses for children going to school.
- The 130 bus will run past the old Sainsbury's bus stop from 30<sup>th</sup> April 07, First hopes this will improve the punctuality at peak times

The Forum has invited Brandon Jones from First Buses to the next Tinsley Forum Meeting at the **Tinsley Green on the Thursday 12<sup>th</sup> April at 7.00pm,**

**we aim to deliver to every household in Tinsley**

# Tinsley Green Community Cafe



Come along to healthy eating Community Café at Tinsley Green.  
**OPEN TO EVERYONE.** We will be serving healthy breakfast, snacks, hot lunches, sandwiches, desserts & drinks

The café is part of the wider Tinsley Green Project that aims to build a better and healthier future for the people in Tinsley.

The café is committed to Fair Trade so that communities in other parts of the world can also improve their futures.

**Tinsley Green Community Café is a not for profit venture**

Opening on: **Tuesday**  
**13th March**

Open: **Tuesday, Wednesday**  
**& Thursday 9am -4pm**

## Volunteers Needed

Make new friends and learn about healthy eating while volunteering in the new community café.

**Free child care and a hot meal are provided.**

Contact Cat Black on 0114 2448885 for more details

## Come to the **BIG LAUNCH**

on **Red Nose Day**  
**Friday 16<sup>th</sup> March**

**Free food to sample**

### Tinsley Quality of Life Survey Traffic issues

Tinsley Forum & Sheffield's East End Quality of Life Initiative project (EEQOL) have been working on a survey of Tinsley residents since September. Local interviewers went out to all areas of Tinsley, selecting every 5<sup>th</sup> house on most streets to try and get a good range of views. By January, 253 questionnaires had been completed. The questionnaire was very wide-ranging, covering quality of life, services for young and older people, health, schools, jobs and training, etc. Just a small issue is highlighted here. We asked everyone a series of questions about road traffic problems in Tinsley, and the table below shows the extent of these problems. The biggest concern was speed of traffic, with people worried for the safety of their children and older, less-mobile residents. The people with the worst traffic problems (on all 5 counts) lived in the area of terraced housing between Town Street and the bottom of St Lawrence Road. Some people also mentioned problems of youths speeding round the streets playing loud music, which kept them awake at nights, but their main concern was for safety. Overall, 49 people commented on how the air pollution in Tinsley affected their health, affecting asthma and other conditions.

Road traffic issue	Big problem	Slight problem
Volume of traffic	114 (45%)	72 (28%)
Speed of traffic	147 (58%)	48 (19%)
Noise from local traffic	102 (40%)	63 (25%)
Noise from motorway	85 (34%)	59 (23%)
Air pollution	136 (54%)	53 (21%)



**TPCC**  
**Annual General Meeting**  
**Wednesday**  
**28th March 2007**

**Tinsley Green**  
**Children's Centre Café**

Everybody welcome, come and help us celebrate this year's achievements. The meeting will cover the election of Trustees, the accounts and the successes and challenges for our organisation

Limited childcare available – ring Sally Pearse or Mary Armstrong on 0114 2448885



## Tinsley Green FC 1 Man Utd 0

It was hard work to secure a victory for the U10 aspiring footballers.

However the good pre-match training and hard work paid off. Thanks to Henry our chief coach who secured the funding to set us on our way to regular coaching sessions and aspiration raising activities. A real team effort (Laura Selby, Zulfikhar Karim, Salim Din and Mohammed Shaffaq) resulted in two minibuses leaving full of youngsters from diverse backgrounds including Czech Republic and Hungary, putting 'football unites and racism divides' into reality.

At 10.30am we headed for the 'theatre of dreams' with packed lunches, snacks and the usual Tinsley humour. Oops! Nearly forgot we also had youth from upper Darnall, known as Handsworth. Kabir Aslam brought along some apni chai (Tea) which tasted better if you sat on the heated seats provided by Audi in the stadium. Liaquot Sharif helping out on the day felt quite at home in Sir Alex's seat.

We arrived at Old Trafford via the scenic Woodhead route at midday.

First stop was lunch followed by a visit around the Museum interacting with the exhibits including table football, Batak reaction board and speed shooting.

Then it was time to see United in the flesh. We stood in the players' tunnel, where the Sheffield Wednesday and Arsenal fans were able to let their imagination run free as they looked over the perfect green pitch.

The youngsters were able to pace down the old players' tunnel like the stars of matches gone by. They were able to sit at the peg of their favourite player and imagine what it would be like to be a part of Sir Alex's team talk. The youth were shown how teams go onto the pitch and at the press room Tinsley Green FC imagined how it would be like to face the press.

We were also told about the initiative to recycle trainers and do our bit for reducing the carbon footprint.

After a great away win for community cohesion it was time to get back to the chill zone, Tinsley.

**Football training takes place every Wednesday 6.30pm-7.30pm for youth who are under 12 at the MUGA Tinsley Park.**

Nawaz Khan



## Roots and Routes Southern Voices Conference

Perspectives from Africa, Asia, Latin America & the Middle East on the **roots** and causes of human and environmental impoverishment and some of the **routes** towards exit strategies and solutions

SADACCA DAY CARE CENTRE,  
Willey St off The Wicker

9.30a.m. – 5p.m.

on

Saturday 24<sup>th</sup> March 2007

ALL WELCOME

No charge for the conference

Please try to register in advance for catering purposes:  
Phone SHEBEEN on: 0114 272 2030

Crèche available if booked by: Friday 16<sup>th</sup> March

*Supported by members of Sheffield Black & Ethnic Minority Environmental Network, SPAT-C, SYAC, SYAYA theatre promotions, Black Card, CARA, Sheffield Futures, IMHOTEP (Saturday) School, World Development Movement, Christian Aid, United Nations Association in Sheffield*

### Clive Betts MP Advice Surgeries

First Saturday Monthly—Darnall Library  
Third Saturday Monthly—Crystal Peaks Library  
9:30 — 11:00am

Email: [betts@parliament.uk](mailto:betts@parliament.uk)

Telephone: 0114 273 4444

Address: 2<sup>nd</sup> Floor, Barkers Pool House,  
Burgess Street,  
Sheffield S1 2HF

## Sheffield LETS

Remember the good old days when neighbours were friendlier, when people did you favours and didn't ask for money in return?

Well there is something good locally that might help.

Sheffield Local Exchange Trading System, LETS for short, is a system where local people can exchange skills and trade with an informal currency called Stones. For instance one person could take a dog for a walk while the owner is out or on holiday and another member could give someone a lift to the shops. If you have a glut of apples, or tomatoes say, you could trade these for Stones and use these to buy a massage.

The Sheffield LETS scheme currently has about sixty members who provide various skills such as complementary therapies, computing, babysitting and occasional lifts.

We are looking for more members to join our scheme so that we can provide more skills especially in the Tinsley area. Initial membership costs £10.00 waged £7.50 for low wages and £5.00 for unwaged. Thereafter annual membership is £8.00 or £5.00. In return you receive a quarterly newsletter and a trade directory of members twice yearly. Social events are also organised where you can meet members and trade.

For more information contact Sheffield LETS, c/o 49 Steade Road, Sheffield S7 1DS or telephone 0114 2216804. Alternatively email us [info@sheffieldlets.org.uk](mailto:info@sheffieldlets.org.uk) giving your name, address and contact details. The office is usually staffed by volunteers on Wednesdays from 7.30 pm till 8.30 pm. Please leave a message on the answerphone at other times. [www.sheffieldlets.org.uk](http://www.sheffieldlets.org.uk)



Are you thinking of doing some learning but aren't sure what you want to do? Come and chat with Roy or Kulsoom at Tinsley Forum and see what LearnDirect courses we can offer you. We have recently enrolled and worked with over 125 local people offering a wide range of courses that can be undertaken at flexible times or even in your own home if you have a PC and internet access. So whether it's an IT course, a skills for life course or you just want to learn how to use a computer to surf the internet, come in and chat with our friendly staff who will do all they can to help you achieve what you want. Also from Monday 19<sup>th</sup> March, LearnDirect moves into the big classroom for the vast majority of the week meaning that people have access to more computers and have more space to learn in.

Tinsley One Stop Shop 120-126 Bawtry Road, telephone 2444887

### Tinsley Forum Environment Topic Group

## What Can We Do About Climate Change

Hear Nick Parsons from South Yorkshire Energy Centre on what we can do to our homes to make them use less energy and what renewable energy alternatives could be used

**Monday 26th March**

7.15 pm

Tinsley Green Centre  
Norborough Road

## Praise or Grumble

This is your opportunity to let us know if you have anything you wish to tell the Forum. Please fill in the slip below if you wish to :

- Complain, (local rubbish collection, nuisance neighbours, traffic etc)
- Report an incident anonymously (racial abuse, concerns about car/house/ street crime)
- To praise or congratulate (Awards/successful funding bids, positive community involvement).
- General comments

Name (optional).....

Address (optional).....

Comments .....

Please drop your slip at the Tinsley Forum. Or post to Tinsley Forum 120 – 126 Bawtry Road, Tinsley, Sheffield, S9 1UE

Or if you wish to put an article in the next Tinsley Tribune please contact Anne Saleh at the Tinsley Forum. **All comments will be kept confidential and passed on to the relevant services if necessary.**