



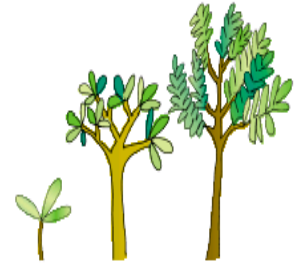
Tinsley Tribune

newsletter of Tinsley Forum

June 2006

Our aim is to improve the quality of life for all the people of Tinsley

All Tinsley Residents invited to celebrate Grand Opening of Tinsley Green



Put Saturday 17th of June between 11.00am and 3.00pm in your diary because that is when all Tinsley residents are invited by the Tinsley Green Steering Group to the launch ceremony and celebrations of Tinsley Green. The building will be officially opened by Sir Bob Kerlake Chief Executive of Sheffield City Council between 11.30 am and 12.00 noon.



Tinsley Green

Activities on the day in Tinsley Green and Recreation Ground 11am to 3pm

- Sports Van
 - Outside Sports Activities
 - Penalty Shoot Out Competition,
 - Mendi/Indian Head Massage
 - Clown/Swamp Circus
 - Helium Balloons Prize Competition
 - Fancy Dress Characters
 - Canvas Painting,
 - Badge Making
 - Face Painting
 - Craft Table/Lucky Dip
 - Balloon Race
 - Community Displays
- Refreshments and Drinks



Children in Playground

Active Sheffield Project Activities during Half Term at Tinsley Green

Open access and all sessions are FREE
Helen White / Imtiaz Begum

Wednesday 31st May 06

Indoors Girls only 8 – 16 years
10.30AM - 12.00 noon

Thursday 1st June 06

Tinsley MUGA pitch 8 – 16 year old
11.30AM – 1.00PM

Friday 2nd June 06

Cricket / Multi – Sport
10.30 am to 12 noon 8-16 year old

Health Walks –

all ages welcome to all sessions, suitable for all abilities – please wear suitable footwear. Contact Helen on 2734266 or 07715 759498 for more details.

Meet at Tinsley Green for the following sessions:

Women Only Thursdays 1.30-3pm

Parent & Toddler (suitable for pushchairs) Mondays 1.30-3pm

Men Only Wednesdays 1.30-3pm

Everyone Tuesdays 1.30-3pm

we aim to deliver to every household in Tinsley

M1 Widening Health Study to involve local Community

The Highways Agency are proposing to widen the M1 Motorway in South Yorkshire to 4 lanes each way; including from Junction 34 South at Tinsley to Junction 33 (Parkway). The Highways Agency are collaborating with the NHS Primary Care Trusts of South Yorkshire to conduct a Health Impact Assessment (HIA). The HIA will assess the positive and negative effects the widening will have on the local community's health, environment and economic circumstances. It will look to see how any positive effects identified can be enhanced and how negative effects may be minimised. The views of local communities are important to this work. Tinsley Forum and East End Quality of Life Initiative will be involved in this work in the coming months

Proposed widening of M1 Motorway

The Highways Agency are holding Public Information Days on the proposed widening of M1 Motorway
Friday 16th June
from 10am to 7.00 pm
Saturday 17th June
from 10am To 5.00 pm
at
Don Valley Stadium

Tinsley Green Community Cafe



Great News - The Community café in Tinsley Green will be opening on a volunteer basis on Wednesday the 7th of June at 10-00am.

We will be serving hot and cold drinks, wrapped food, toast and teacakes between 10-00am and 2-00pm, Monday to Friday from the above date.

We have had an amazing response to our request for volunteers, 35 people completed their Food and Hygiene training on the 17th of May and from this group 17 people have committed to give some time each week to get the Café up and running. More volunteers are required from the community and if you would like to be involved and have some spare time please ring Sally Pearce or Tracy Wright on 2448885

The above volunteer arrangement will remain in place until we have secured the necessary funding to open as a full Café serving hot and cold food throughout the week

Tinsley Green Children's Centre Nursery



In April the TPCC moved their nurseries from Roundabout Centre and St Lawrence into Tinsley Green. Staff and children love the bright, purpose built rooms and new equipment and especially appreciate the outdoor play area within the park. We have had many enquiries from local parents who are using the fantastic new play equipment in the park and through this contact have welcomed a number of new children into our setting. If you want to see the new nursery we will be open on the 17th June as part of the Tinsley Green Open Day.

Message From The Tinsley Green Facilities Manager

It's May 2006 and at last the new centre – Tinsley Green, is finished. The project has come in a bit late on schedule and there have been hiccups here and there but now our community has a great facility with regenerated park and fantastic playground. There are still a few finishing touches outstanding such as grass seeding to cover bare soil, car park markings and signage but things are coming together fast. Two new posts will soon be advertised throughout the community for a full-time receptionist and a part-time caretaker, and 17 volunteers from Tinsley are receiving on-going training for their work in the community café.

As many of you will know, there are a lot of staff and services in Tinsley Green. This has meant that we have needed a short period of settling in before the building becomes 'fully functional' for local residents. Many residents have expressed a wish to make more use of the building and gain more access; and we are currently working hard to make this possible. I hope that you will bear with us a little bit longer until we are running at full strength although there are now services running for the community in Tinsley Green.

Anyone with any questions or queries can contact Bella Pender, Facilities Manager of Tinsley Green on 2448899 or call into the centre Mon-Fri 9am-5pm

Tinsley Cooling Towers: gateway to the North win Big Art Competition



Tinsley Cooling Towers were one of the winners of Channel 4's Big Art competition. The development of a public art project around the Cooling Towers will be part of a television programme to be transmitted in October 2007. You might have got the impression from the TV and press that EON who own the Towers had ruined the party by saying that they wanted to demolish the towers and build a distribution depot. But negotiation are on going between Channel4 and EON. Channel4 were in Tinsley in April discussing with Tinsley Forum how they could work with the curator of the project to involve local people.

Tinsley, Darnall and Handsworth Forums , Brinsworth and Catcliffe Partnership, Tinsley Tree Project and East End Quality of Life Initiative representatives supporting a Cooling towers for Big Art event on March 9th



Hi, my name is Laura Selby and I am the new Youth Development Worker at Tinsley Forum (covering



Laura Whittaker's maternity until the autumn).

I am here to offer support, advice and training to local young people. So, if you are aged 13 upwards, please feel free to come and see me if you need any support with education, employment or personal matters. I look forward to meeting you!

The Standby Button: How much is that electronic feature costing

Wasted energy caused by leaving appliances on standby could power 4000.000 homes. They also pump one million tones of carbon into the atmosphere. In fact these millions of 'sleeping' appliances– video recorders, washing machines and tv's etc account for 1% of the nations total carbon emissions every year Need a few more facts?

The average television is left on standby up to 17.5 hours a day using 8% of their energy consumption in standby mode Tumble dryers can use 38% of power waiting for you to turn them off at the end of a cycle **Save your money and the planet turn off the standby**

LANDLORDS

You can access a list of contractors / companies giving discounts!
Free access to dump it sites throughout the city!

Access to a Landlord Housing Benefit Advice line!
Information about the Housing Act 2004 which will affect all private landlords!
You can access free information and advice aimed at supporting you as a landlord!

To find out more, come to the:

Tinsley Landlord session held on the last Wednesday of every month

1pm – 4pm

Tinsley Advice Service Tinsley One Stop Shop, 120 – 126 Bawtry Road

Sessions held on:

31st May, 28th June, 26th July, 30th August, 27th Sept, 25th Oct

For more information contact Daniel Massey, Dennis Tester or Mohamed Hujaleh on 273 5134 or 273 4680

Email: prp@sheffield.gov.uk Website: www.sheffield.gov.uk/privaterentedproject

Tinsley Tribune, Tinsley, Tinsley One Stop Shop, 120-126 Bawtry Rd Tinsley, S9 1UE phone Neil Parry on 0114 2859911. The views of contributors are not necessarily the views of Tinsley Forum or East End Quality of Life Initiative



@ Tinsley One Stop Shop

DO YOU WANT TO IMPROVE YOUR CURRENT COMPUTER SKILLS?

WOULD YOU LIKE TO HAVE A RECOGNISED QUALIFICATION (GCSE EQUIVALENT) IN ENGLISH, MATHS OR COMPUTERS?

DO YOU WANT TO LEARN AT YOUR OWN PACE?

HAVE YOU GOT A COMPUTER AT HOME AND WANT TO LEARN FROM HOME?

DO YOU WANT TO LEARN IN A FRIENDLY ENVIRONMENT WITH TUTOR SUPPORT?

If you can answer yes to any of the above questions then maybe we have the right course for you.

Ranges of courses fall into the following categories:

Skills for Life

Learndirect is here to help you brush up on your word and number skills - and once you get started you'll find that it's easier than you thought.

Home and Office IT Courses

If you want to brush up your existing skills or learn some new ones - even if you're an absolute computer novice - these are the courses for you. You can learn about office skills and applications, email and the Internet and much more.



The following are for future development and can be viewed on www.learndirect.co.uk or please enquire as to availability

Specialist IT Courses

Looking to develop your skills for your current IT role, or to enable you to get your first job in IT? Then our specialist IT courses are for you. The courses cover development with specific software languages and packages, hardware and network technologies and much more.

Business and Management Courses

You'll find our Business and Management courses engaging, interactive and easy to use. Each course looks at a specific business issue, so you'll see the results immediately. The courses cover presentation skills, personal development and much more.

Languages

learndirect offer courses in a wide range of languages. Whether you're a beginner or looking to brush up your existing language skills these courses will help you.

For full details of these and other learndirect courses offered at the Tinsley One Stop Shop please do not hesitate to contact Roy by telephone on 0114 2444887 or on email roy@tinsleyforum.co.uk and we will do our best to find the right course for you.

For a full list of courses offered by Sheffield College at Tinsley One Stop Shop please contact Nasim on 0114 256 2671.

Alternatively call in and have a chat with us, we are open 9.00 am – 5.00pm Monday to Thursday and 9.00am -12.00pm Friday.

Praise or Grumble: Street lights out , or speedy removal of rubbish?

Do you have any issues about your street or immediate environment that you might want to raise with the City Council's StreetForce or other organisations. Please write your praise or grumble below and Tinsley Forum will see that the appropriate person is informed

Praise or Grumble _____

Name & Address and phone number if possible

Please post, place in suggestion Box at Tinsley Forum, Tinsley One Stop Shop 12/1266 Bawtry Road or ring Anne Saleh on 2444887