

## Quality of Life Indicators Trends in the Darnall Action Area since 2001

### Health:

- How satisfied are you with the availability and cost of fresh fruit and vegetables locally?
- Self-rated health score
- Limiting long-term illness

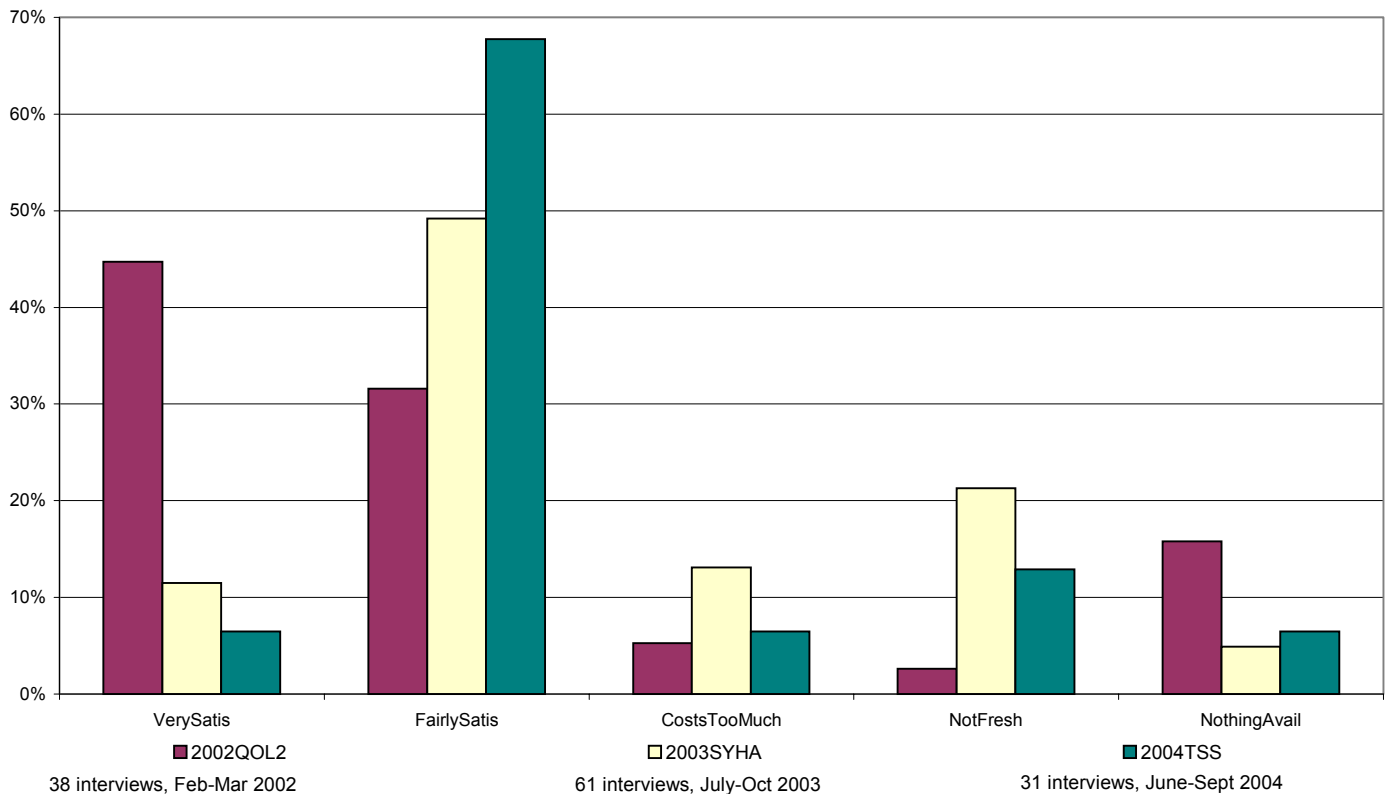
Copies of this report may be obtained from:  
Barbara Rimmington  
Research Officer  
East End Quality of Life Initiative  
10 Montgomery Terrace Road  
Sheffield, S6 3BU  
Tel: 0114 285 9931  
Fax: 0114 278 7173  
email: [barbara@sheffielddct.co.uk](mailto:barbara@sheffielddct.co.uk)

November 2004

# How satisfied are you with the availability and cost of fresh fruit and vegetables locally?

## Responses by ethnic group - White

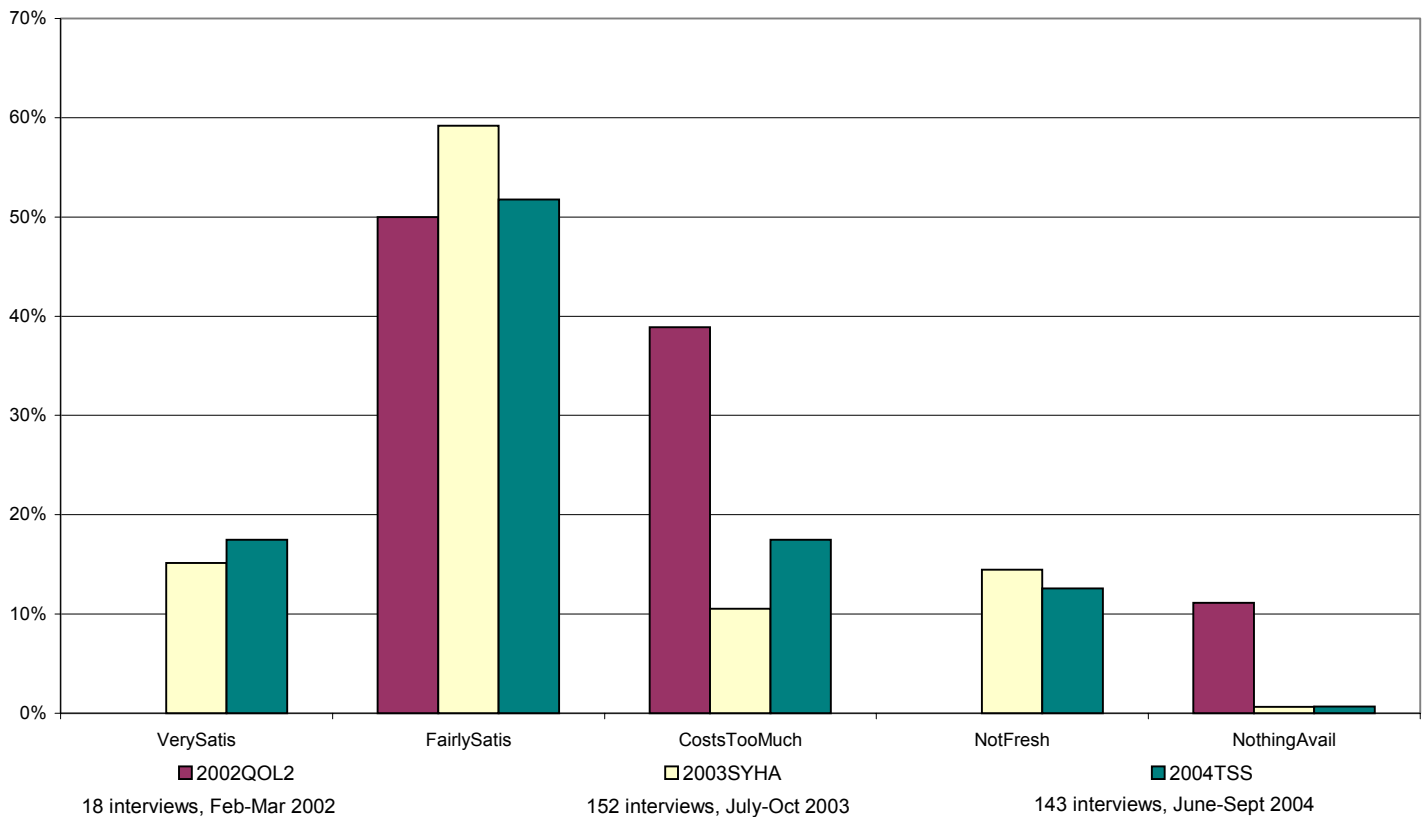
White	2002QOL2		2003SYHA		2004TSS	
	No.	%	No.	%	No.	%
VerySatis	17	45%	7	11%	2	6%
FairlySatis	12	32%	30	49%	21	68%
CostsTooMuch	2	5%	8	13%	2	6%
NotFresh	1	3%	13	21%	4	13%
NothingAvail	6	16%	3	5%	2	6%
<b>Total</b>	<b>38</b>	<b>100%</b>	<b>61</b>	<b>100%</b>	<b>31</b>	<b>100%</b>



# How satisfied are you with the availability and cost of fresh fruit and vegetables locally?

## Responses by ethnic group - Asian

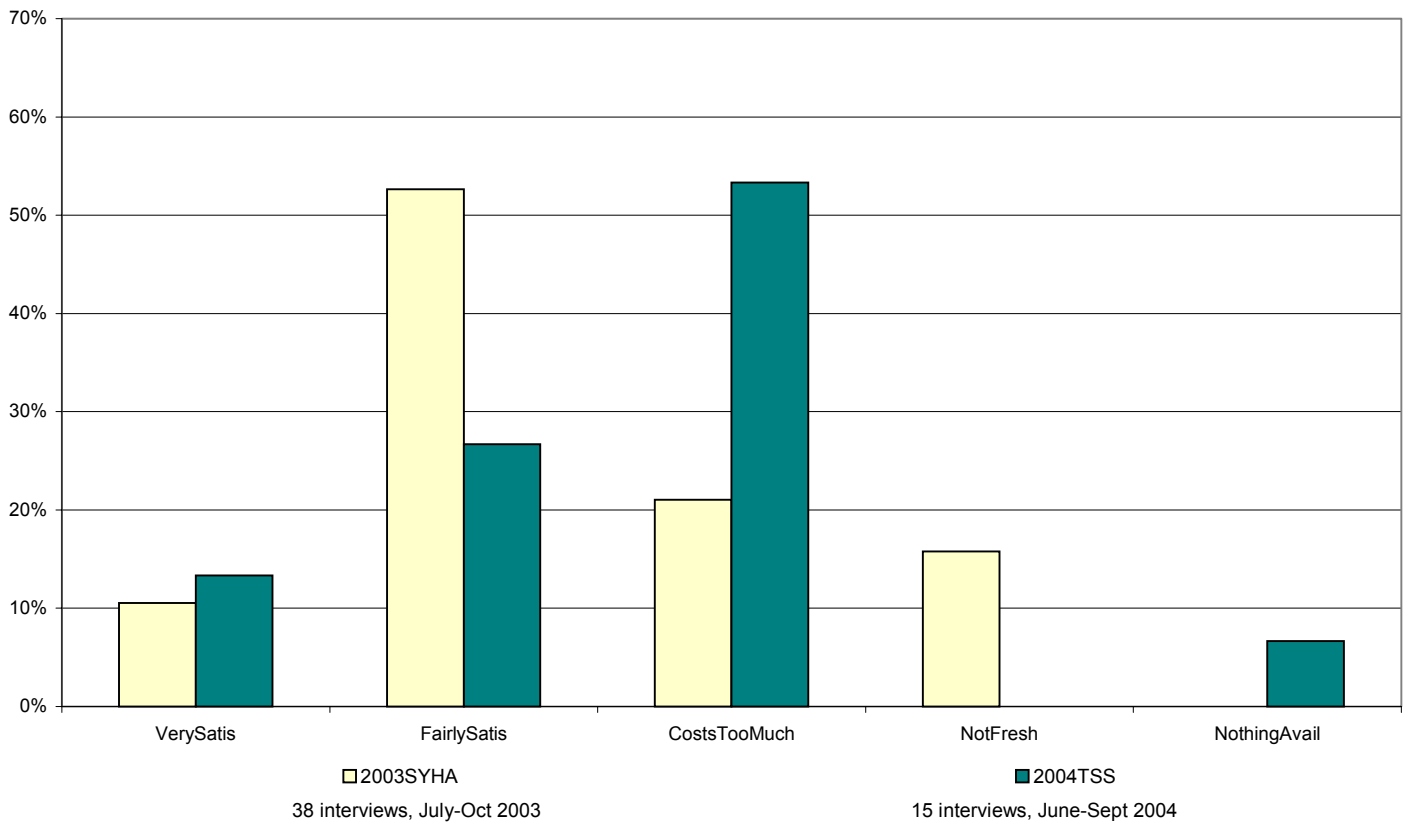
Asian	2002QOL2		2003SYHA		2004TSS	
	No.	%	No.	%	No.	%
VerySatis	0	0%	23	15%	25	17%
FairlySatis	9	50%	90	59%	74	52%
CostsTooMuch	7	39%	16	11%	25	17%
NotFresh	0	0%	22	14%	18	13%
NothingAvail	2	11%	1	1%	1	1%
<b>Total</b>	<b>18</b>	<b>100%</b>	<b>152</b>	<b>100%</b>	<b>143</b>	<b>100%</b>



# How satisfied are you with the availability and cost of fresh fruit and vegetables locally?

## Responses by ethnic group - Other

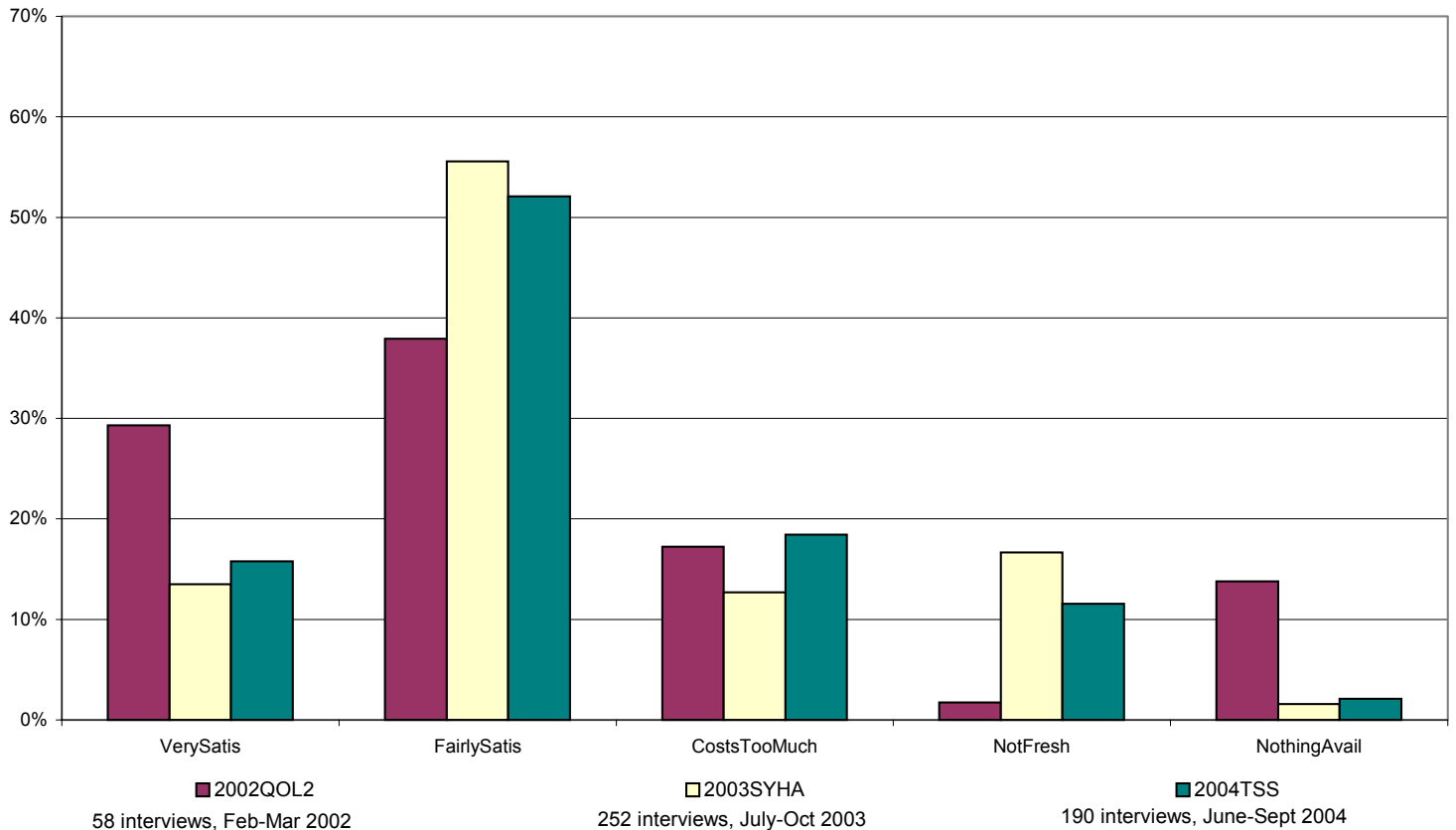
Other	2003SYHA		2004TSS	
	No.	%	No.	%
VerySatis	4	11%	2	13%
FairlySatis	20	53%	4	27%
CostsTooMuch	8	21%	8	53%
NotFresh	6	16%	0	0%
NothingAvail	0	0%	1	7%
<b>Total</b>	<b>38</b>	<b>100%</b>	<b>15</b>	<b>100%</b>



# How satisfied are you with the availability and cost of fresh fruit and vegetables locally?

## All respondents

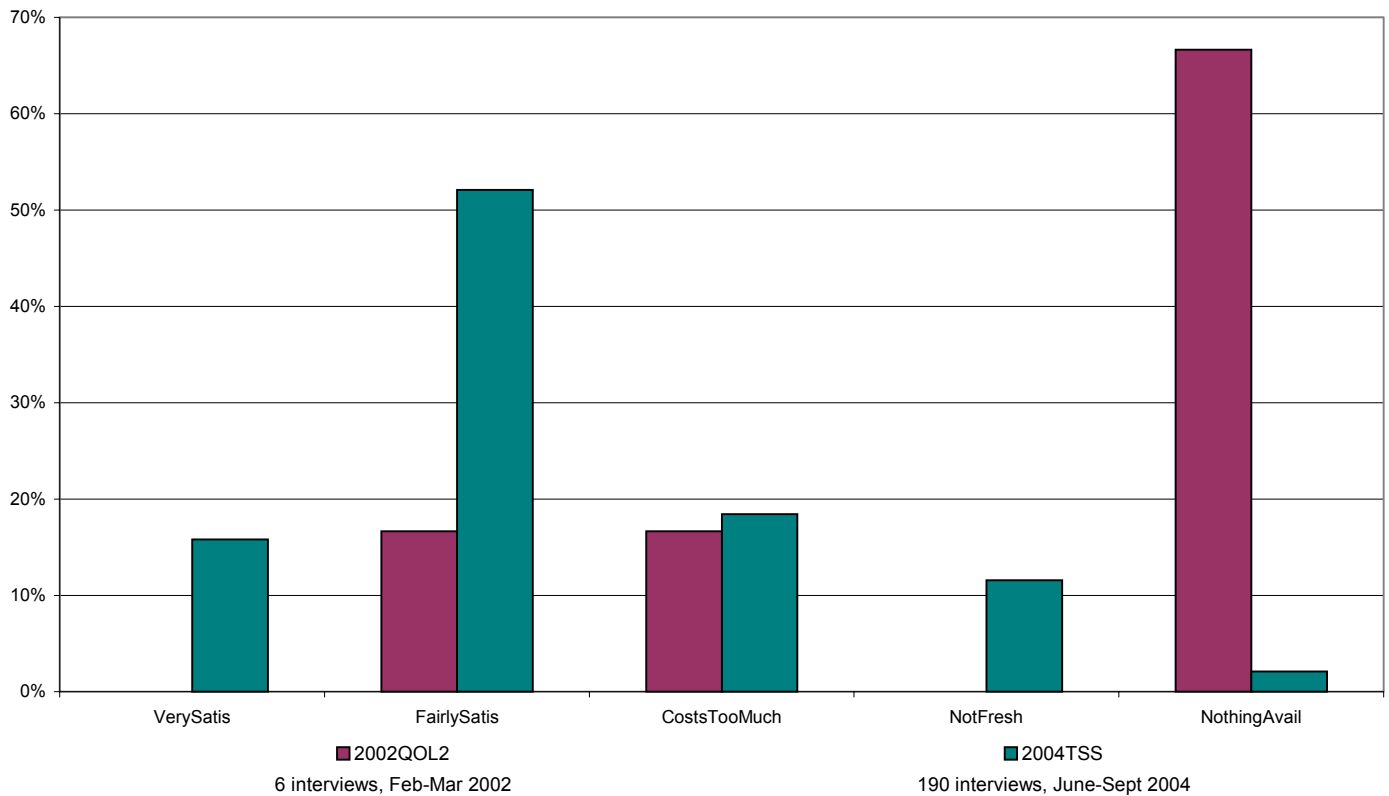
All	2002QOL2		2003SYHA		2004TSS	
	No.	%	No.	%	No.	%
VerySatis	17	29%	34	13%	30	16%
FairlySatis	22	38%	140	56%	99	52%
CostsTooMuch	10	17%	32	13%	35	18%
NotFresh	1	2%	42	17%	22	12%
NothingAvail	8	14%	4	2%	4	2%
<b>Total</b>	<b>58</b>	<b>100%</b>	<b>252</b>	<b>100%</b>	<b>190</b>	<b>100%</b>



# How satisfied are you with the availability and cost of fresh fruit and vegetables locally?

## Responses by geographical area - Tinsley

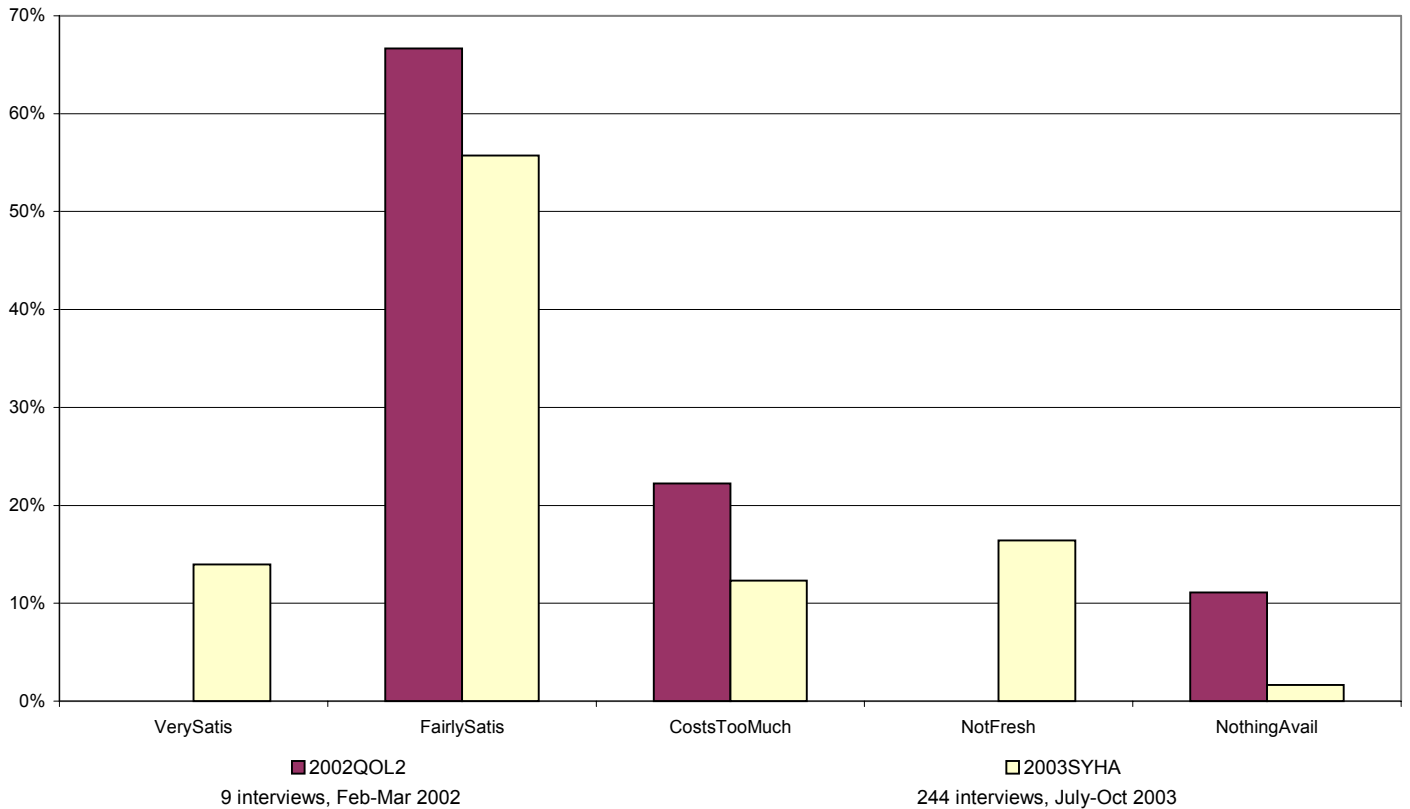
S9 1	2002QOL2		2004TSS	
	No.	%	No.	%
VerySatis	0	0%	30	16%
FairlySatis	1	17%	99	52%
CostsTooMuch	1	17%	35	18%
NotFresh	0	0%	22	12%
NothingAvail	4	67%	4	2%
<b>Total</b>	<b>6</b>	<b>100%</b>	<b>190</b>	<b>100%</b>



How satisfied are you with the availability and cost of fresh fruit and vegetables locally?

**Responses by geographical area - Darnall (Staniforth Road/Kettlebridge/Kashmir Gardens)**

S9 3	2002QOL2		2003SYHA	
	No.	%	No.	%
VerySatis	0	0%	34	14%
FairlySatis	6	67%	136	56%
CostsTooMuch	2	22%	30	12%
NotFresh	0	0%	40	16%
NothingAvail	1	11%	4	2%
<b>Total</b>	<b>9</b>	<b>100%</b>	<b>244</b>	<b>100%</b>

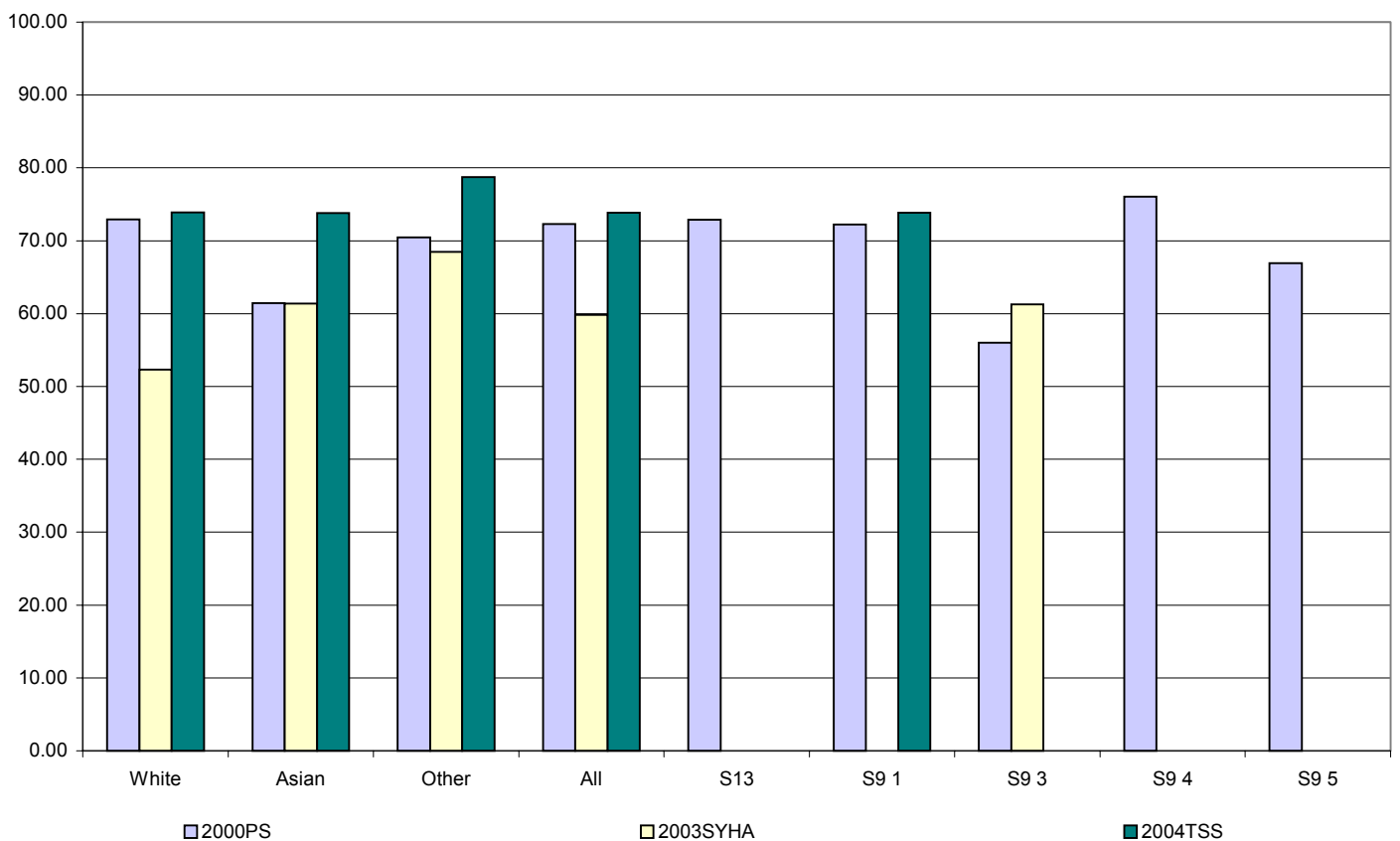


Health Score (where 100 is the best and 0 is the worst imaginable health state), Limiting Long-Term Illness, and Age

**Responses by ethnic groups and geographical areas**

	2000PS				2003SYHA				2004TSS			
	No.Replies	Ave Score	LLTI%	Ave Age	No.Replies	Ave Score	LLTI%	Ave Age	No.Replies	Ave Score	LLTI%	Ave Age
White	415	72.95	31%	56.35	70	52.32	59%	58.66	37	73.92	8%	29.60
Asian	26	61.43	35%	45.27	156	61.41	36%	37.60	151	73.81	18%	29.57
Other	24	70.48	42%	61.46	39	68.50	13%	36.40	16	78.75	38%	29.69
<b>All</b>	<b>465</b>	<b>72.30</b>	<b>32%</b>	<b>55.99</b>	<b>268</b>	<b>59.83</b>	<b>38%</b>	<b>42.99</b>	<b>205</b>	<b>73.86</b>	<b>22%</b>	<b>29.57</b>
S13	172	72.89	33%	56.44								
S9 1	63	72.25	22%	51.33					205	73.86	22%	29.57
S9 3	11	56.00	45%	55.82	258	61.30	39%	42.72				
S9 4	136	76.06	24%	56.16								
S9 5	83	66.94	49%	58.35								

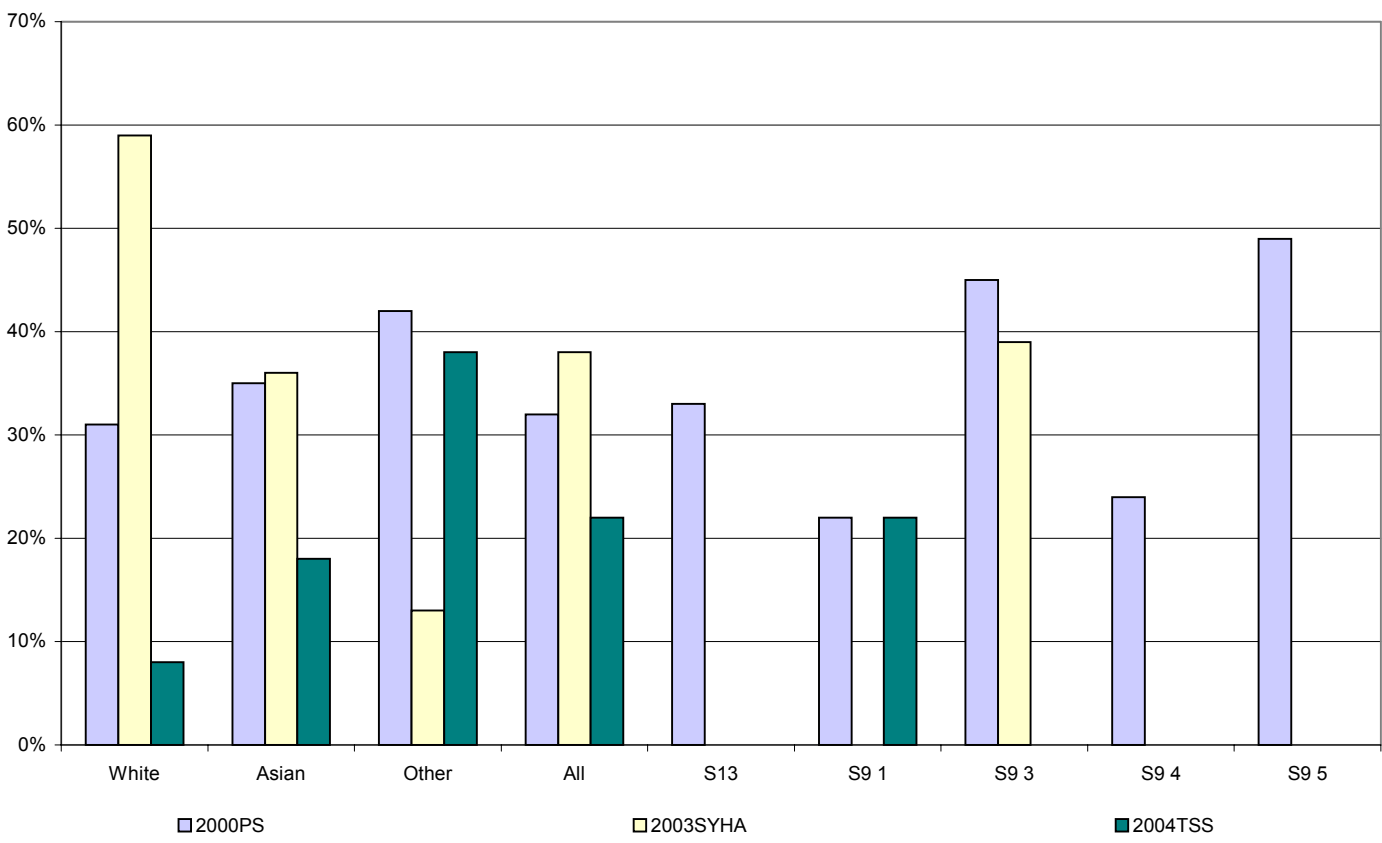
**Average Health Score**





# Health Score (where 100 is the best and 0 is the worst imaginable health state), Limiting Long-Term Illness, and Age

## Limiting Long-Term Illness



## Average Age

