

Quality of Life Indicators Trends in the Darnall Action Area since 2001

How long have you lived in the area?

To what extent are you satisfied or dissatisfied with this area as a place to live?

Over the last 2 years how, if at all, has this area changed as a place to live?

What do you most like about living in this area?

If you had a free choice, would you like to move out of this area, or would you prefer to stay?

Looking ahead, are you likely to move out of this area?

Copies of this report may be obtained from:

Barbara Rimmington

Research Officer

East End Quality of Life Initiative

10 Montgomery Terrace Road

Sheffield, S6 3BU

Tel: 0114 285 9931

Fax: 0114 278 7173

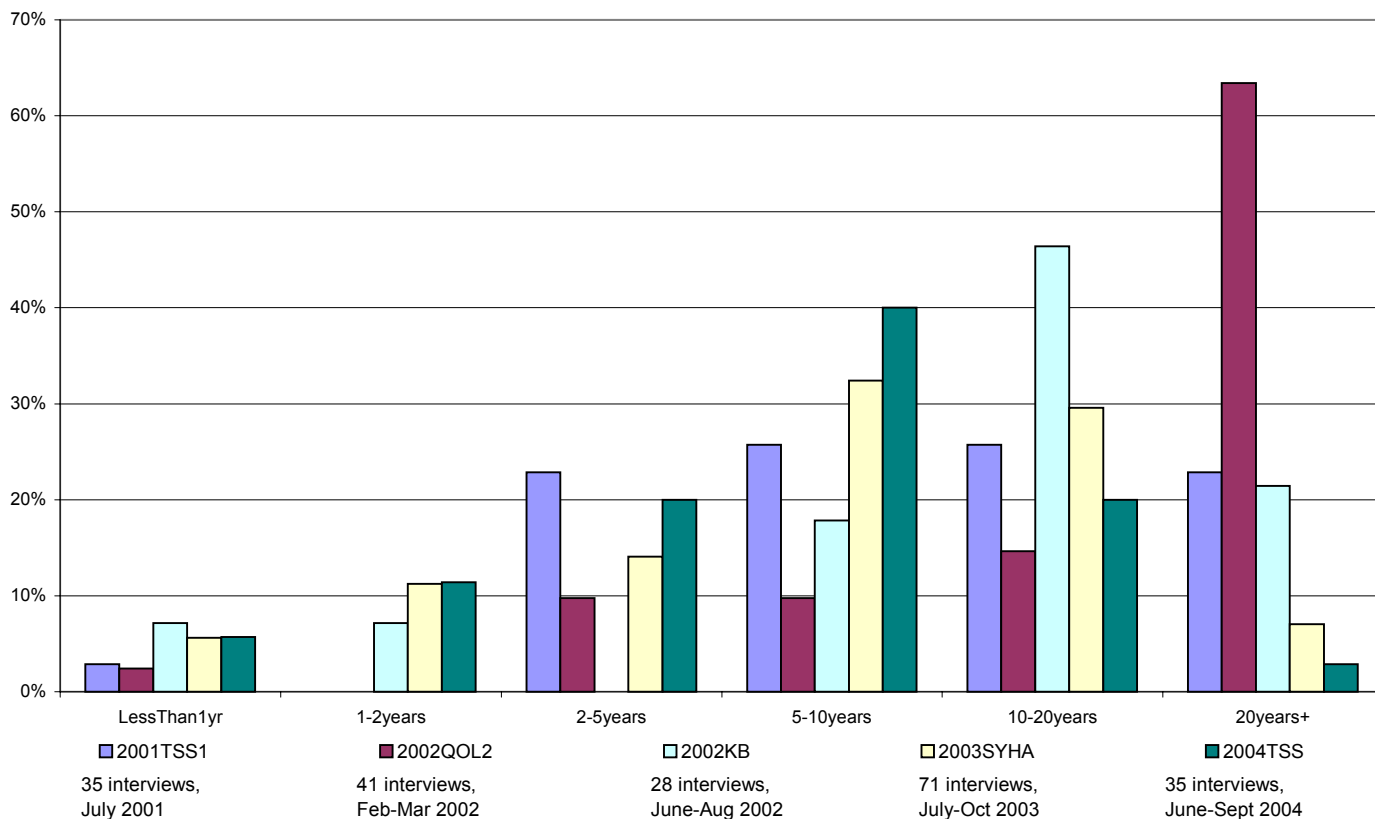
email: barbara@sheffielddct.co.uk

November 2004

How long have you lived in the area?

Responses by ethnic group - White

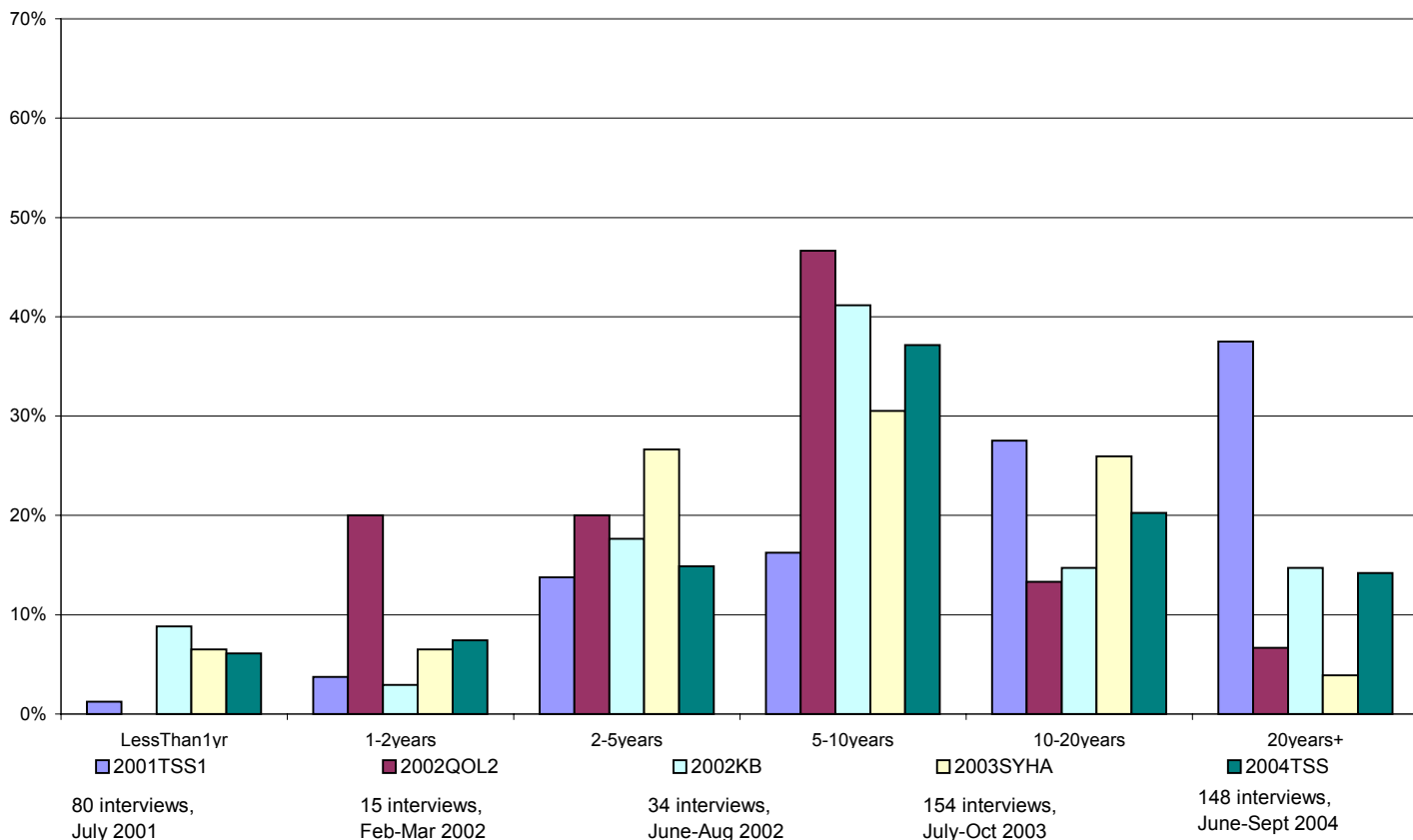
White	2001TSS1		2002QOL2		2002KB		2003SYHA		2004TSS	
	No.	%	No.	%	No.	%	No.	%	No.	%
LessThan 1yr	1	3%	1	2%	2	7%	4	6%	2	6%
1-2years	0	0%	0	0%	2	7%	8	11%	4	11%
2-5years	8	23%	4	10%	0	0%	10	14%	7	20%
5-10years	9	26%	4	10%	5	18%	23	32%	14	40%
10-20years	9	26%	6	15%	13	46%	21	30%	7	20%
20years+	8	23%	26	63%	6	21%	5	7%	1	3%
Total	35	100%	41	100%	28	100%	71	100%	35	100%



How long have you lived in the area?

Responses by ethnic group - Asian

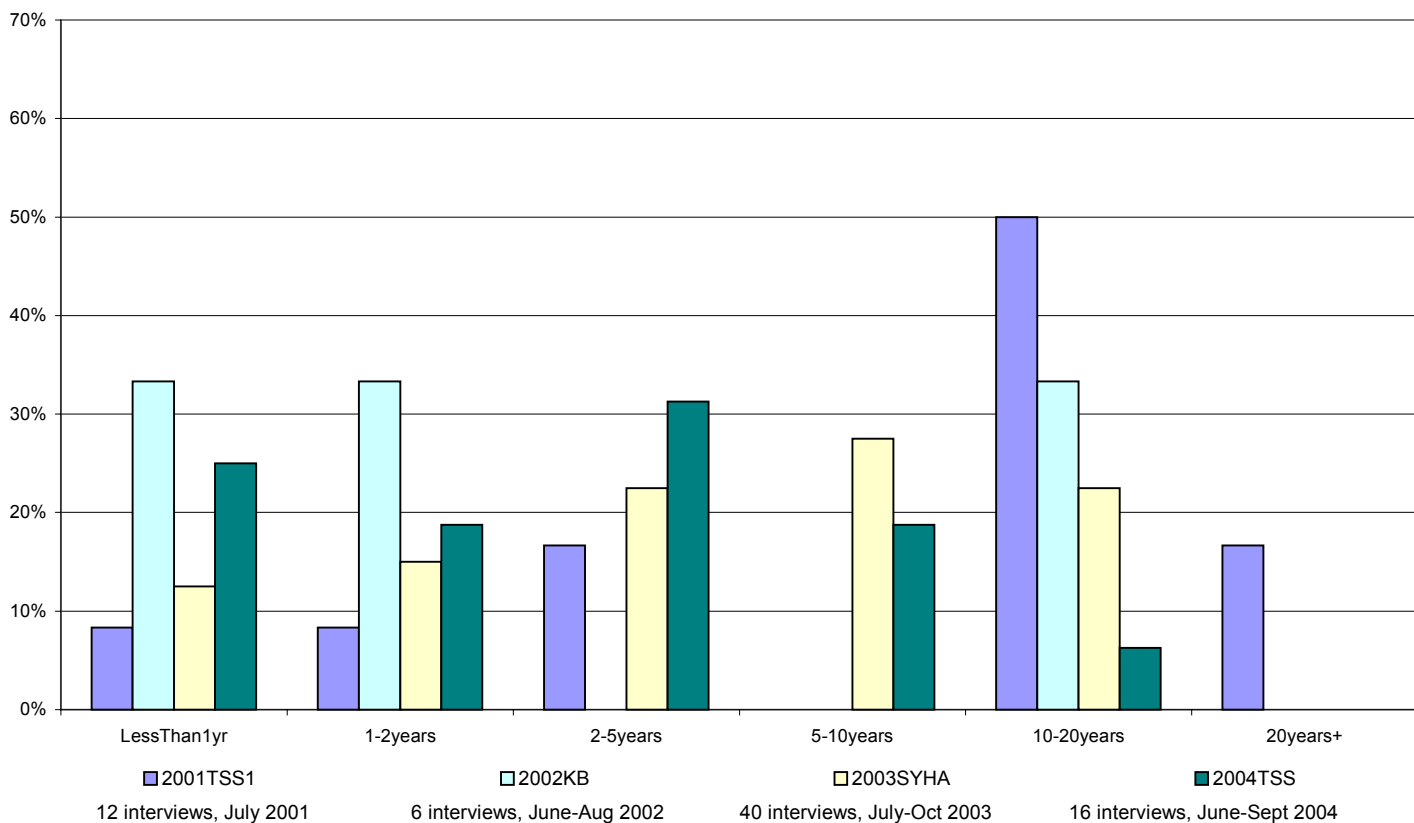
Asian	2001TSS1		2002QOL2		2002KB		2003SYHA		2004TSS	
	No.	%	No.	%	No.	%	No.	%	No.	%
LessThan 1yr	1	1%	0	0%	3	9%	10	6%	9	6%
1-2years	3	4%	3	20%	1	3%	10	6%	11	7%
2-5years	11	14%	3	20%	6	18%	41	27%	22	15%
5-10years	13	16%	7	47%	14	41%	47	31%	55	37%
10-20years	22	28%	2	13%	5	15%	40	26%	30	20%
20years+	30	38%	1	7%	5	15%	6	4%	21	14%
Total	80	100%	15	100%	34	100%	154	100%	148	100%



How long have you lived in the area?

Responses by ethnic group - Other

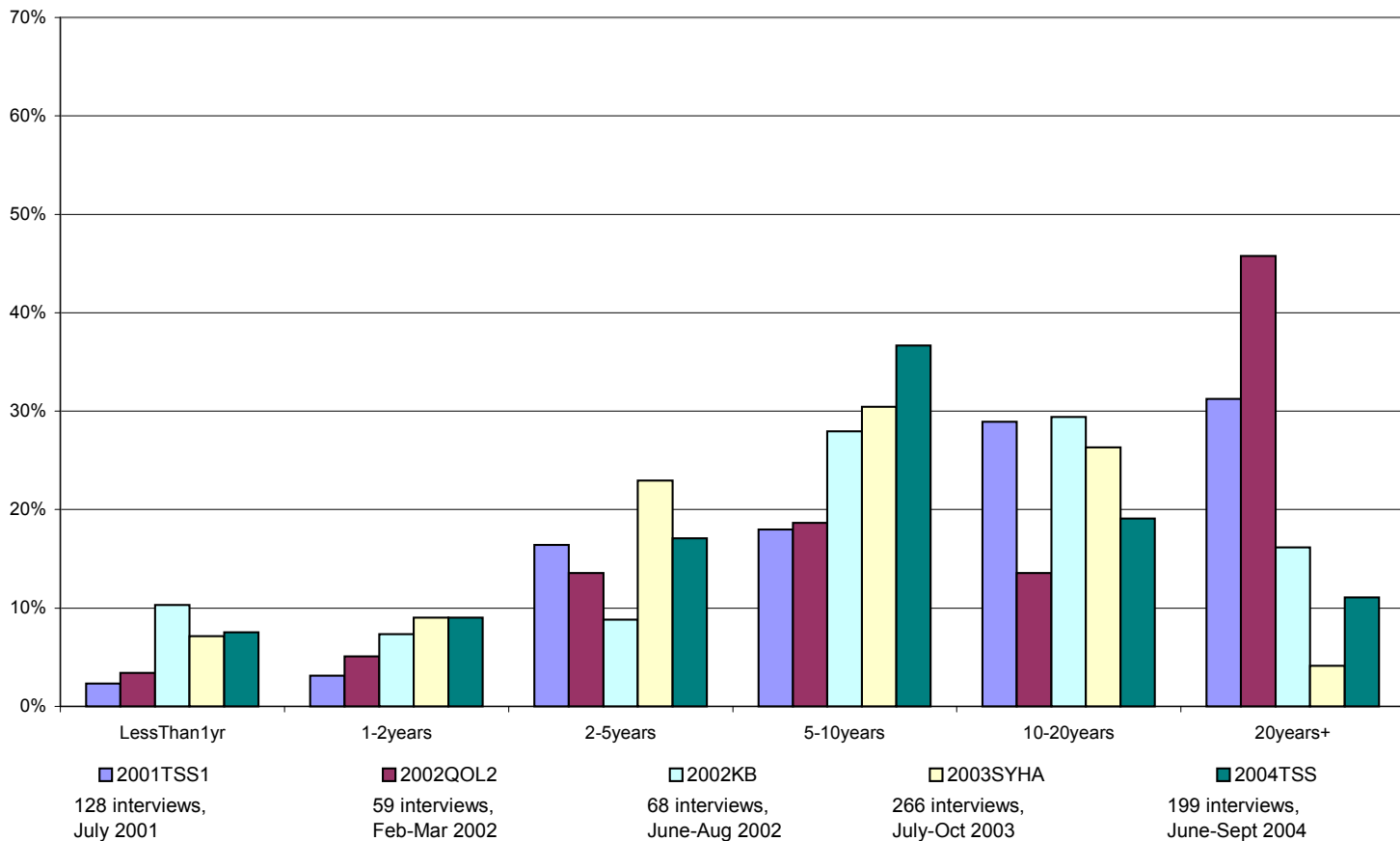
Other	2001TSS1		2002KB		2003SYHA		2004TSS	
	No.	%	No.	%	No.	%	No.	%
LessThan1yr	1	8%	2	33%	5	13%	4	25%
1-2years	1	8%	2	33%	6	15%	3	19%
2-5years	2	17%	0	0%	9	23%	5	31%
5-10years	0	0%	0	0%	11	28%	3	19%
10-20years	6	50%	2	33%	9	23%	1	6%
20years+	2	17%	0	0%	0	0%	0	0%
Total	12	100%	6	100%	40	100%	16	100%



How long have you lived in the area?

All respondents

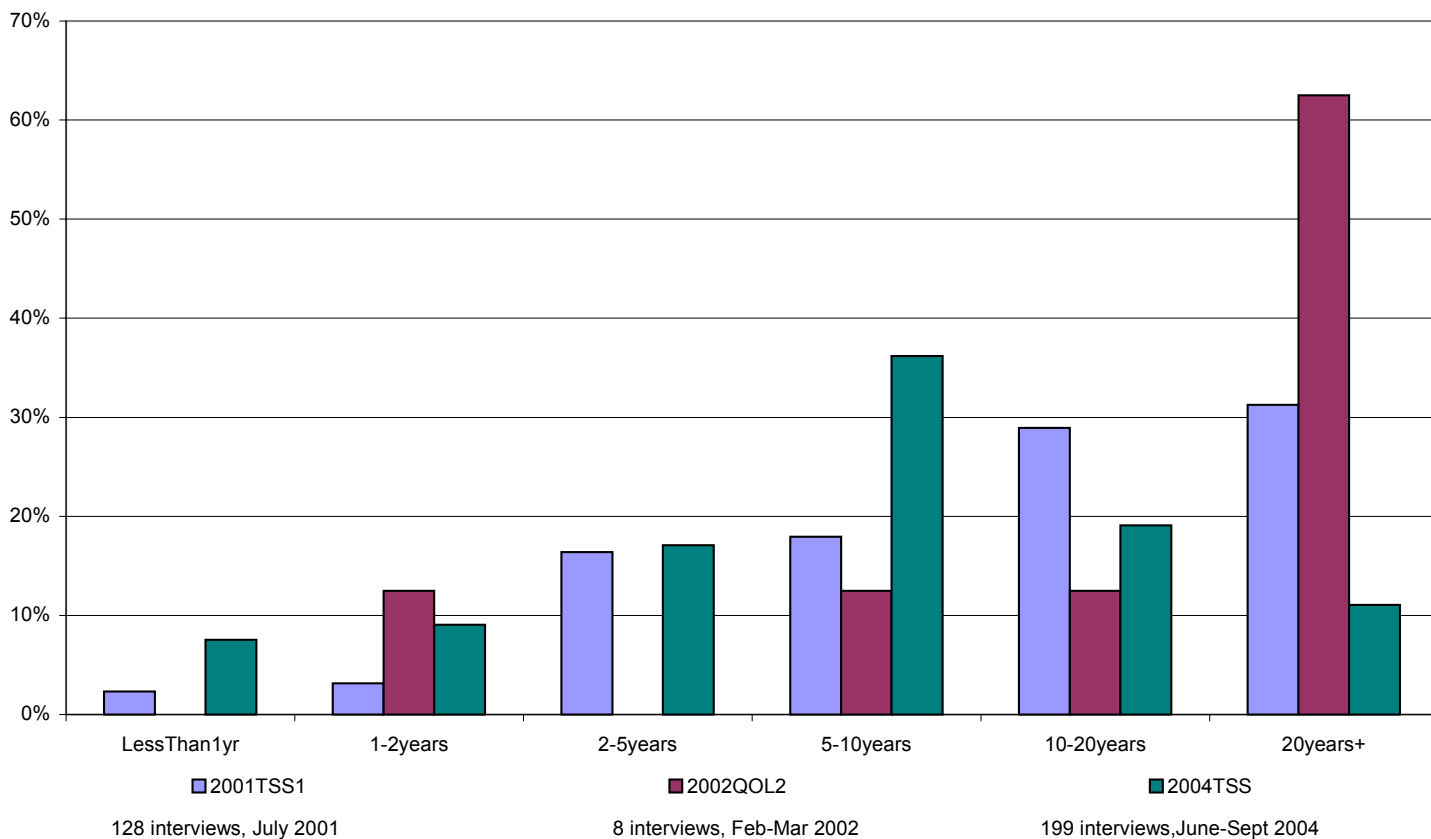
All	2001TSS1		2002QOL2		2002KB		2003SYHA		2004TSS	
	No.	%	No.	%	No.	%	No.	%	No.	%
LessThan 1yr	3	2%	2	3%	7	10%	19	7%	15	8%
1-2years	4	3%	3	5%	5	7%	24	9%	18	9%
2-5years	21	16%	8	14%	6	9%	61	23%	34	17%
5-10years	23	18%	11	19%	19	28%	81	30%	73	37%
10-20years	37	29%	8	14%	20	29%	70	26%	38	19%
20years+	40	31%	27	46%	11	16%	11	4%	22	11%
Total	128	100%	59	100%	68	100%	266	100%	199	100%



How long have you lived in the area?

Responses by geographical area - Tinsley

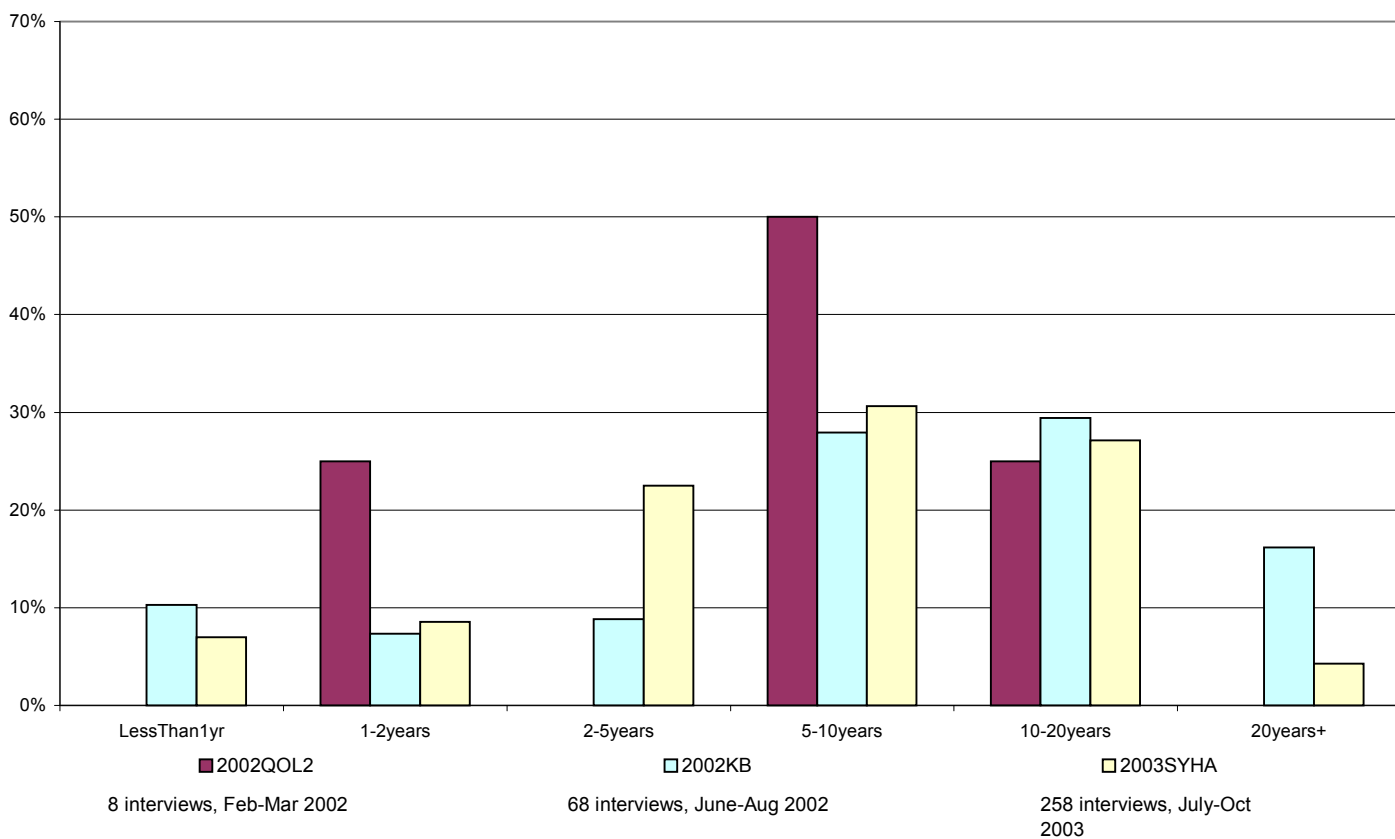
S9 1	2001TSS1		2002QOL2		2004TSS	
	No.	%	No.	%	No.	%
LessThan1yr	3	2%	0	0%	15	8%
1-2years	4	3%	1	13%	18	9%
2-5years	21	16%	0	0%	34	17%
5-10years	23	18%	1	13%	73	36%
10-20years	37	29%	1	13%	38	19%
20years+	40	31%	5	63%	22	11%
Total	128	100%	8	100%	199	100%



How long have you lived in the area?

Responses by geographical area - Darnall (Staniforth Road/Kettlebridge/Kashmir Gardens)

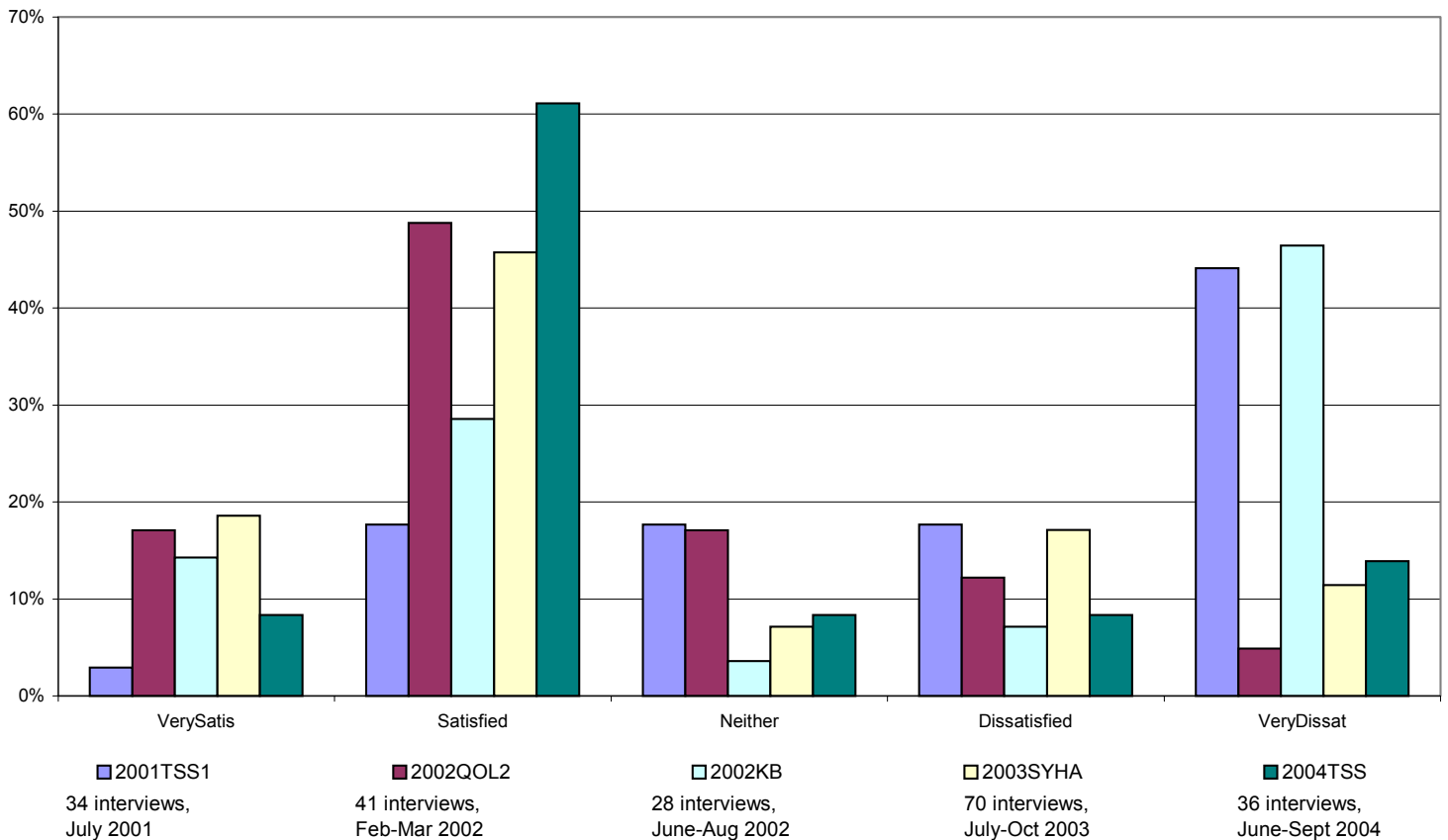
S9 3	2002QOL2		2002KB		2003SYHA	
	No.	%	No.	%	No.	%
LessThan1yr	0	0%	7	10%	18	7%
1-2years	2	25%	5	7%	22	9%
2-5years	0	0%	6	9%	58	22%
5-10years	4	50%	19	28%	79	31%
10-20years	2	25%	20	29%	70	27%
20years+	0	0%	11	16%	11	4%
Total	8	100%	68	100%	258	100%



To what extent are your satisfied or dissatisfied with this area as a place to live?

Responses by ethnic group - White

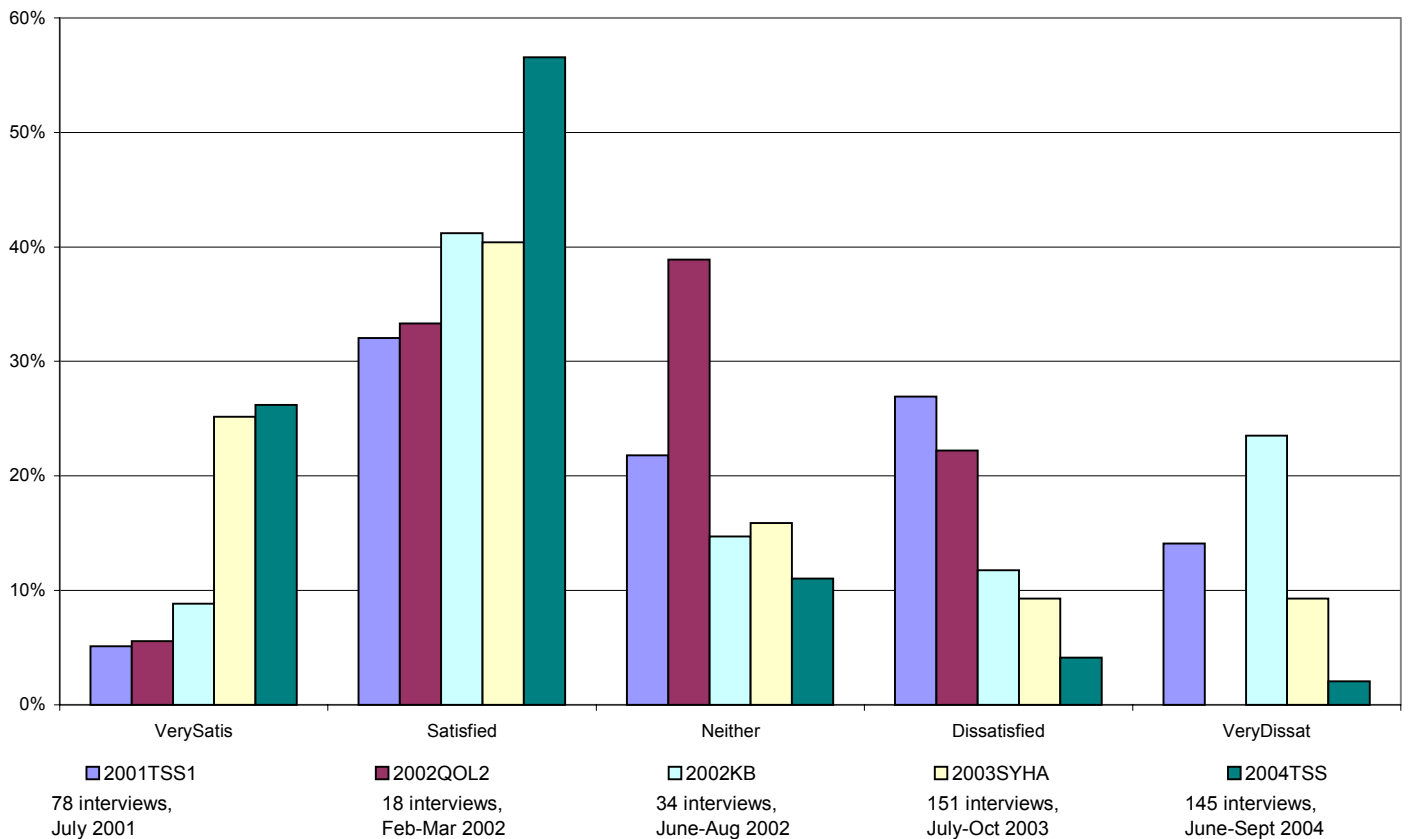
White	2001TSS1		2002QOL2		2002KB		2003SYHA		2004TSS	
	No.	%	No.	%	No.	%	No.	%	No.	%
VerySatis	1	3%	7	17%	4	14%	13	19%	3	8%
Satisfied	6	18%	20	49%	8	29%	32	46%	22	61%
Neither	6	18%	7	17%	1	4%	5	7%	3	8%
Dissatisfied	6	18%	5	12%	2	7%	12	17%	3	8%
VeryDissat	15	44%	2	5%	13	46%	8	11%	5	14%
Total	34	100%	41	100%	28	100%	70	100%	36	100%



To what extent are your satisfied or dissatisfied with this area as a place to live?

Responses by ethnic group - Asian

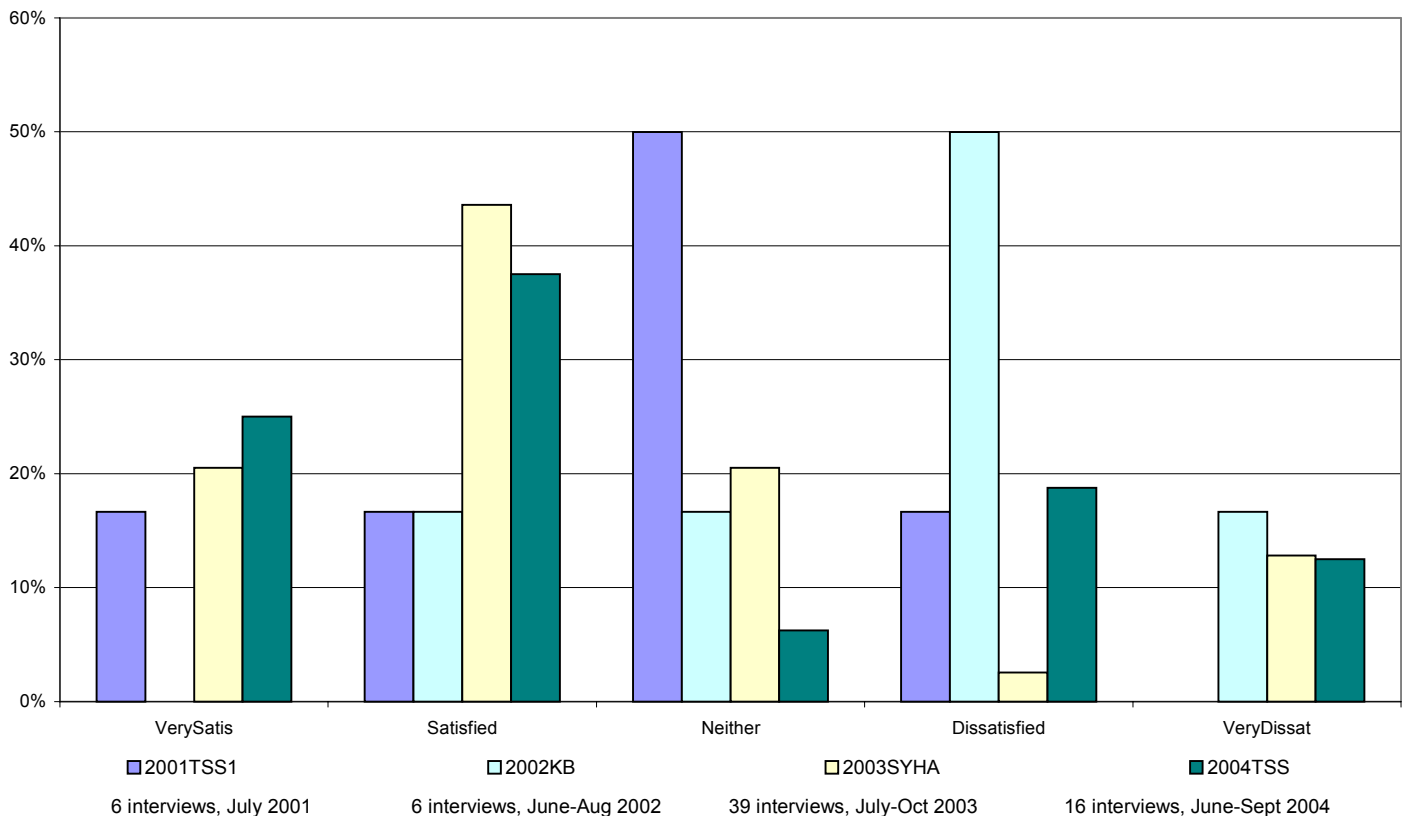
Asian	2001TSS1		2002QOL2		2002KB		2003SYHA		2004TSS	
	No.	%	No.	%	No.	%	No.	%	No.	%
VerySatis	4	5%	1	6%	3	9%	38	25%	38	26%
Satisfied	25	32%	6	33%	14	41%	61	40%	82	57%
Neither	17	22%	7	39%	5	15%	24	16%	16	11%
Dissatisfied	21	27%	4	22%	4	12%	14	9%	6	4%
VeryDissat	11	14%	0	0%	8	24%	14	9%	3	2%
Total	78	100%	18	100%	34	100%	151	100%	145	100%



To what extent are your satisfied or dissatisfied with this area as a place to live?

Responses by ethnic group - Other

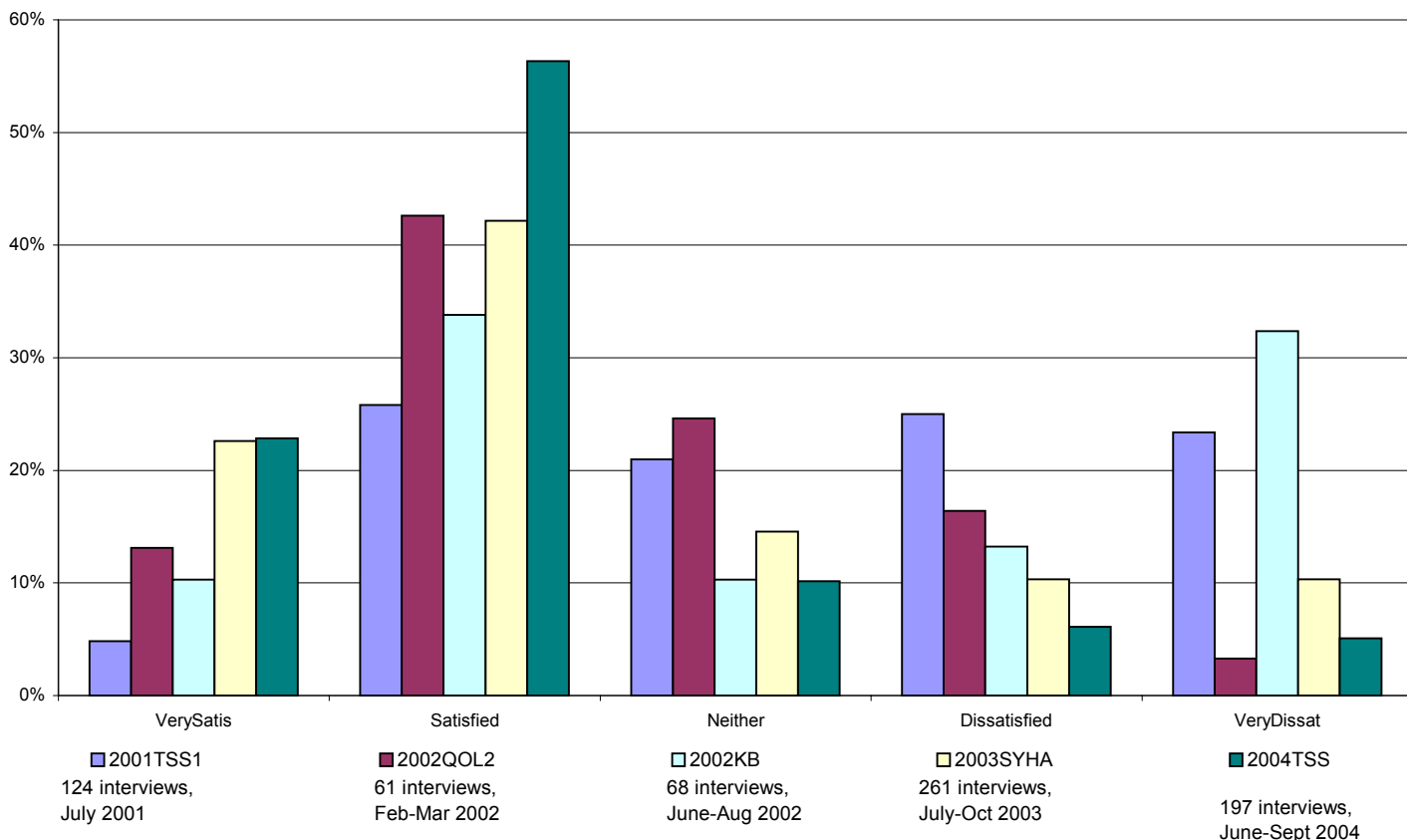
Other	2001TSS1		2002KB		2003SYHA		2004TSS	
	No.	%	No.	%	No.	%	No.	%
VerySatis	1	17%	0	0%	8	21%	4	25%
Satisfied	1	17%	1	17%	17	44%	6	38%
Neither	3	50%	1	17%	8	21%	1	6%
Dissatisfied	1	17%	3	50%	1	3%	3	19%
VeryDissat	0	0%	1	17%	5	13%	2	13%
Total	6	100%	6	100%	39	100%	16	100%



To what extent are your satisfied or dissatisfied with this area as a place to live?

All respondents

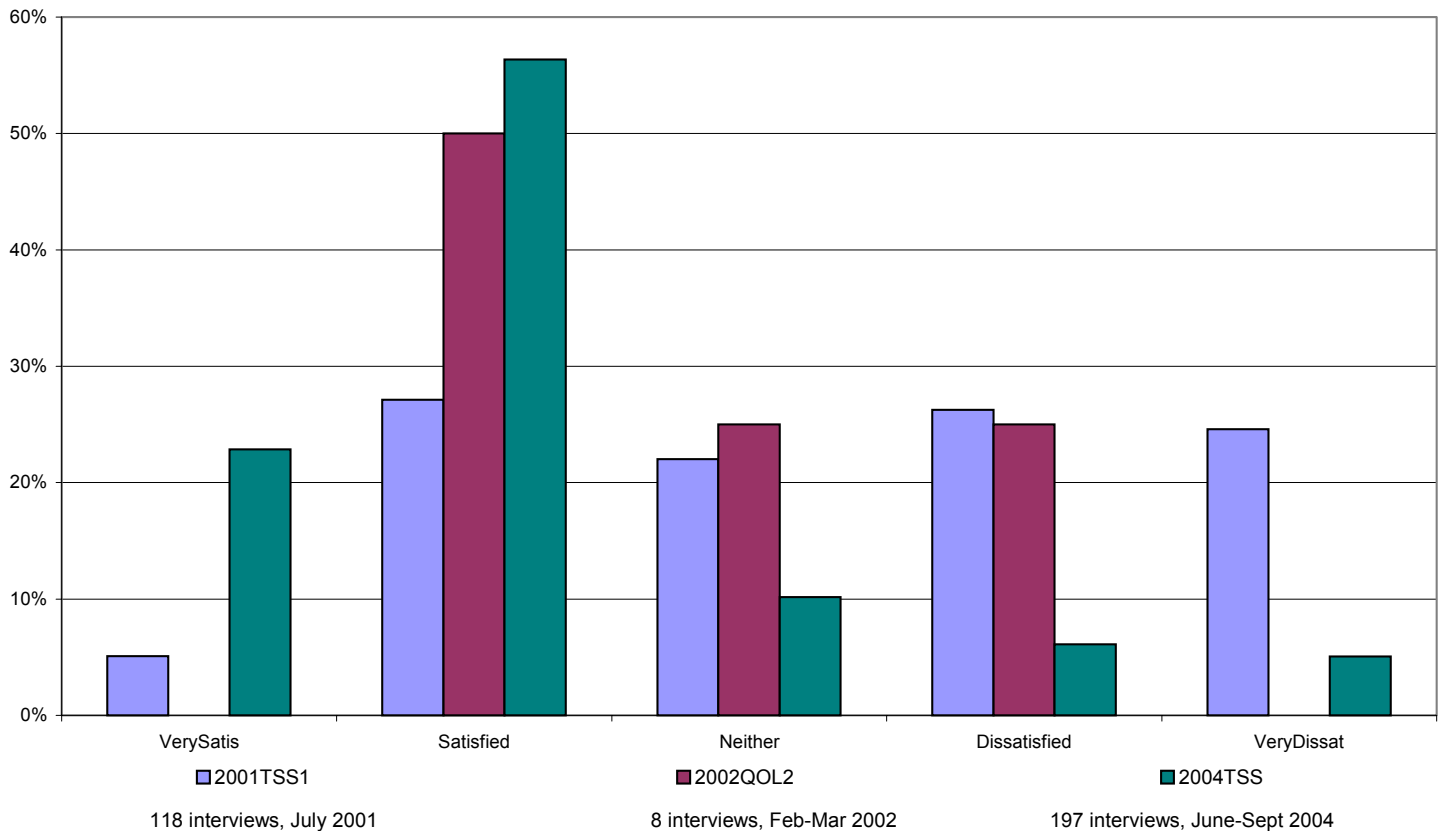
All	2001TSS1		2002QOL2		2002KB		2003SYHA		2004TSS	
	No.	%	No.	%	No.	%	No.	%	No.	%
VerySatis	6	5%	8	13%	7	10%	59	23%	45	23%
Satisfied	32	26%	26	43%	23	34%	110	42%	111	56%
Neither	26	21%	15	25%	7	10%	38	15%	20	10%
Dissatisfied	31	25%	10	16%	9	13%	27	10%	12	6%
VeryDissat	29	23%	2	3%	22	32%	27	10%	10	5%
Total	124	100%	61	100%	68	100%	261	100%	197	100%



To what extent are your satisfied or dissatisfied with this area as a place to live?

Responses by geographical area - Tinsley

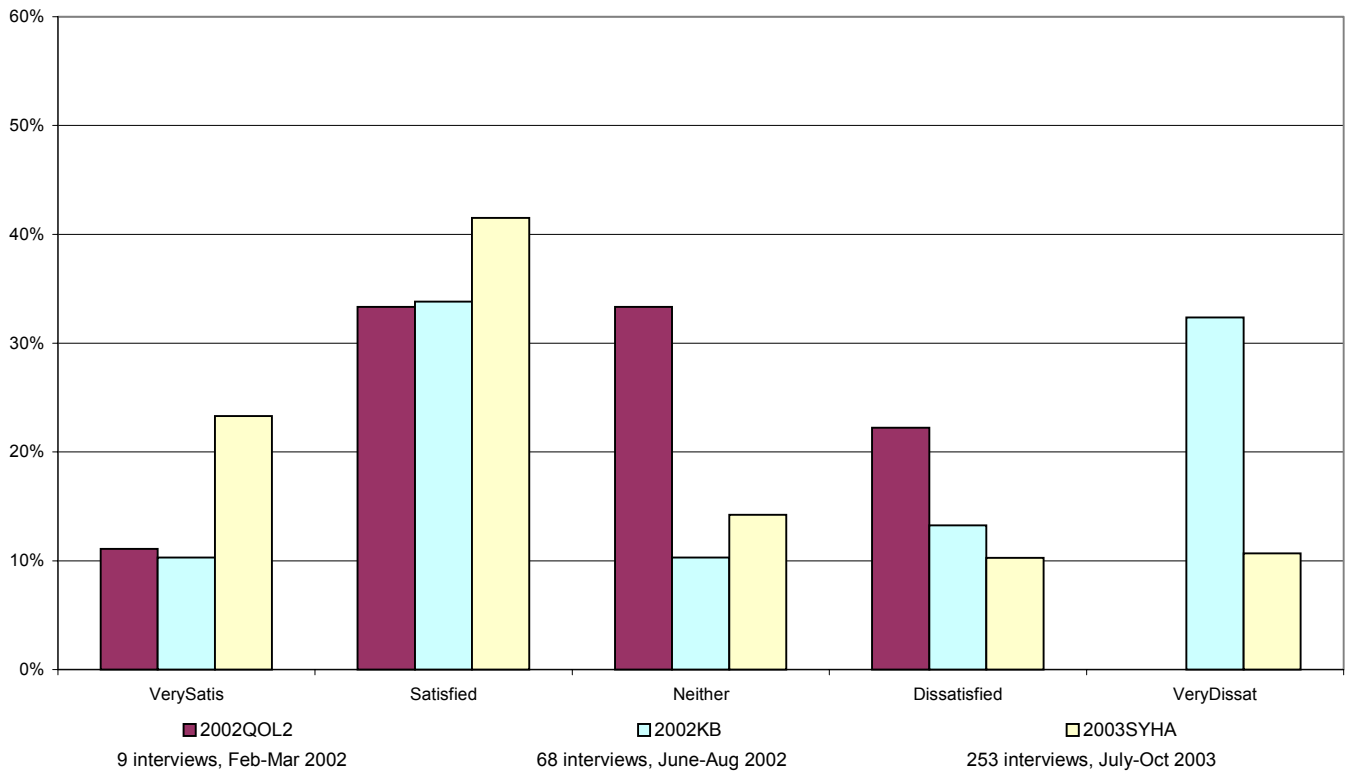
S9 1	2001TSS1		2002QOL2		2004TSS	
	No.	%	No.	%	No.	%
VerySatis	6	5%	0	0%	45	23%
Satisfied	32	27%	4	50%	111	56%
Neither	26	22%	2	25%	20	10%
Dissatisfied	31	26%	2	25%	12	6%
VeryDissat	29	25%	0	0%	10	5%
Total	118	100%	8	100%	197	100%



To what extent are you satisfied or dissatisfied with this area as a place to live?

Responses by geographical area - Darnall (Staniforth Road/Kettlebridge/Kashmir Gardens)

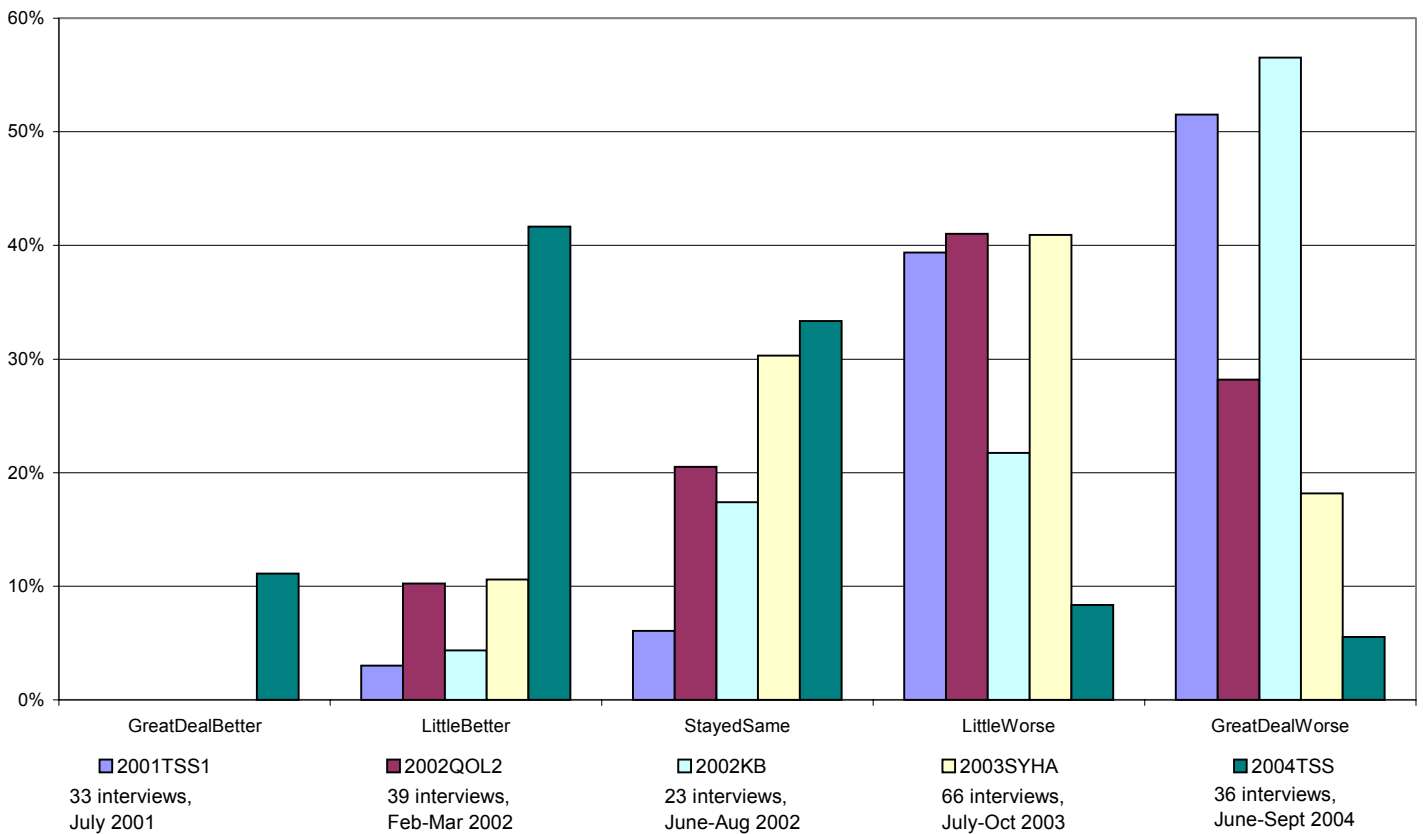
S9 3	2002QOL2		2002KB		2003SYHA	
	No.	%	No.	%	No.	%
VerySatis	1	11%	7	10%	59	23%
Satisfied	3	33%	23	34%	105	42%
Neither	3	33%	7	10%	36	14%
Dissatisfied	2	22%	9	13%	26	10%
VeryDissat	0	0%	22	32%	27	11%
Total	9	100%	68	100%	253	100%



Over the last 2 years how, if at all, has this area changed as a place to live?

Responses by ethnic group - White

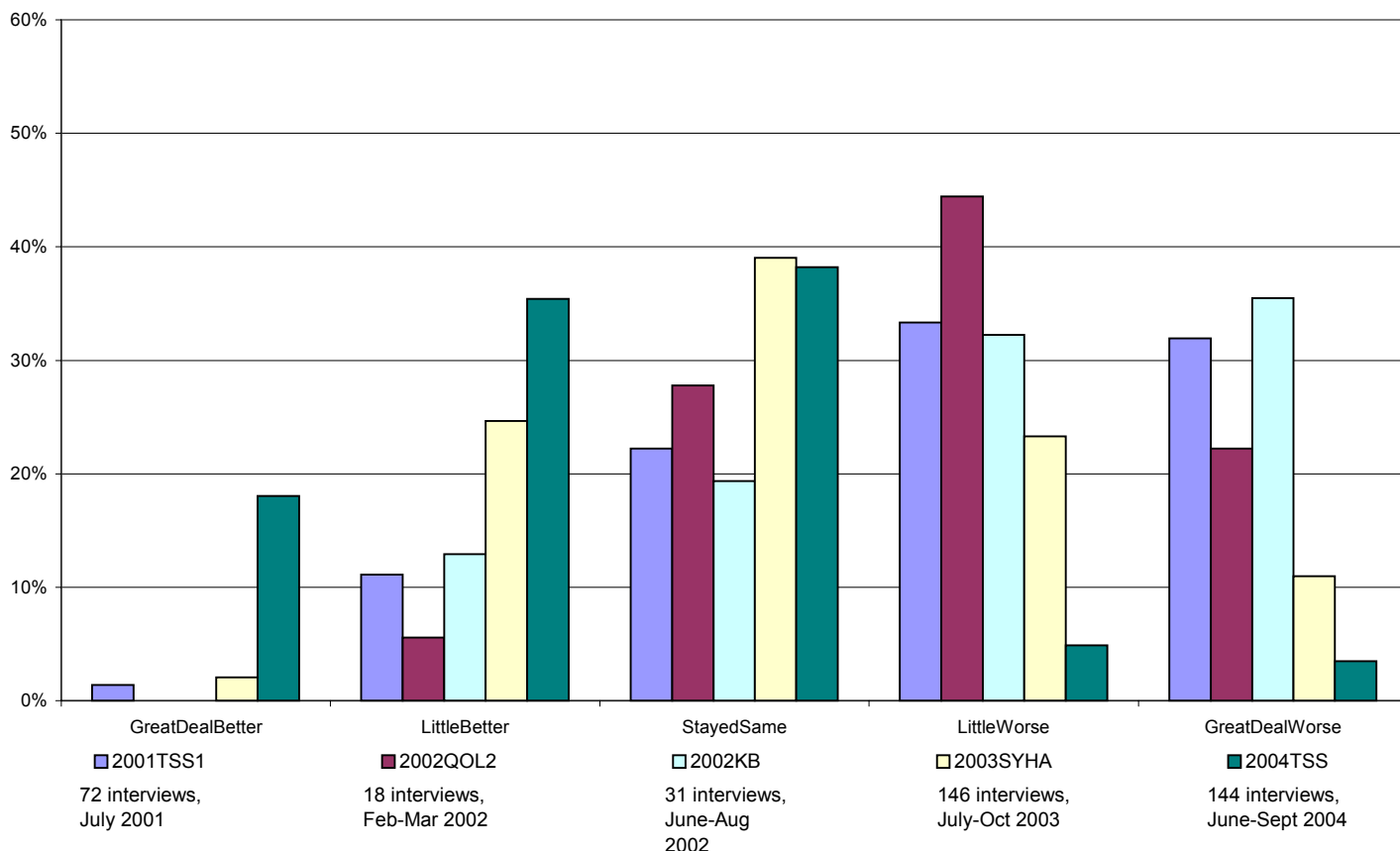
White	2001TSS1		2002QOL2		2002KB		2003SYHA		2004TSS	
	No.	%	No.	%	No.	%	No.	%	No.	%
GreatDeal Better	0	0%	0	0%	0	0%	0	0%	4	11%
LittleBetter	1	3%	4	10%	1	4%	7	11%	15	42%
StayedSame	2	6%	8	21%	4	17%	20	30%	12	33%
LittleWorse	13	39%	16	41%	5	22%	27	41%	3	8%
GreatDeal Worse	17	52%	11	28%	13	57%	12	18%	2	6%
Total	33	100%	39	100%	23	100%	66	100%	36	100%



Over the last 2 years how, if at all, has this area changed as a place to live?

Responses by ethnic group - Asian

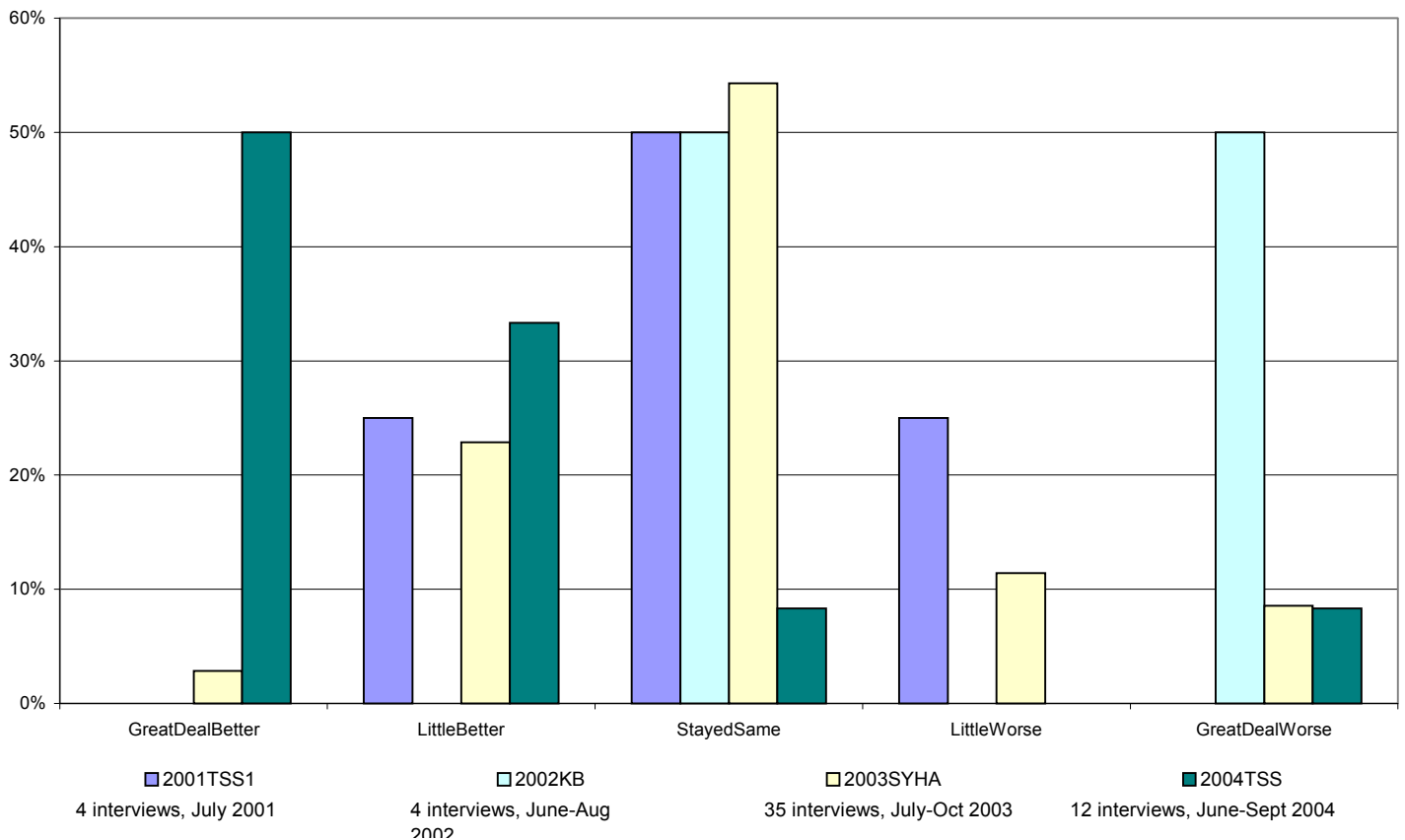
Asian	2001TSS1		2002QOL2		2002KB		2003SYHA		2004TSS	
	No.	%	No.	%	No.	%	No.	%	No.	%
GreatDeal Better	1	1%	0	0%	0	0%	3	2%	26	18%
LittleBetter	8	11%	1	6%	4	13%	36	25%	51	35%
StayedSame	16	22%	5	28%	6	19%	57	39%	55	38%
LittleWorse	24	33%	8	44%	10	32%	34	23%	7	5%
GreatDeal Worse	23	32%	4	22%	11	35%	16	11%	5	3%
Total	72	100%	18	100%	31	100%	146	100%	144	100%



Over the last 2 years how, if at all, has this area changed as a place to live?

Responses by ethnic group - Other

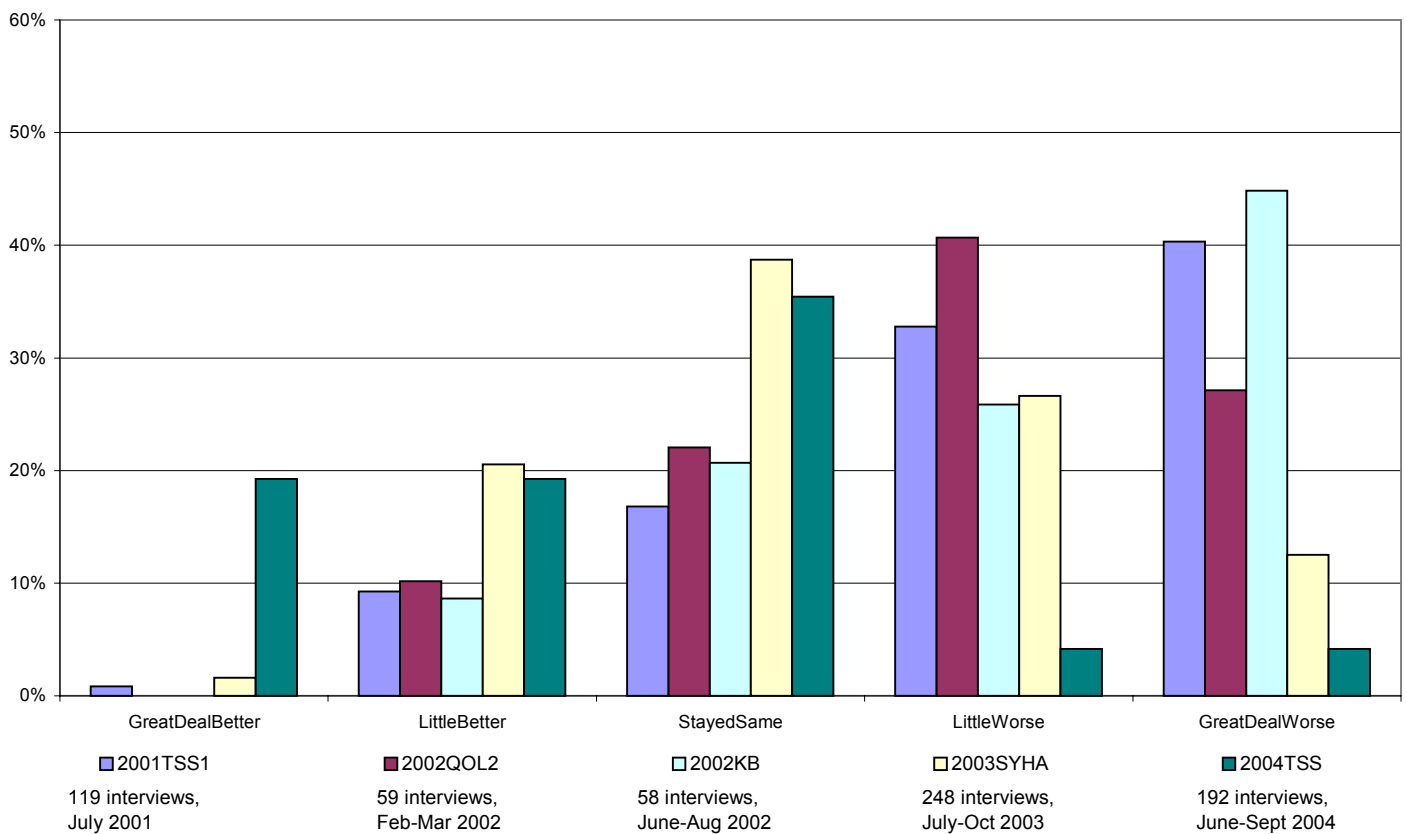
Other	2001TSS1		2002KB		2003SYHA		2004TSS	
	No.	%	No.	%	No.	%	No.	%
GreatDealBetter	0	0%	0	0%	1	3%	6	50%
LittleBetter	1	25%	0	0%	8	23%	4	33%
StayedSame	2	50%	2	50%	19	54%	1	8%
LittleWorse	1	25%	0	0%	4	11%	0	0%
GreatDealWorse	0	0%	2	50%	3	9%	1	8%
Total	4	100%	4	100%	35	100%	12	100%



Over the last 2 years how, if at all, has this area changed as a place to live?

All respondents

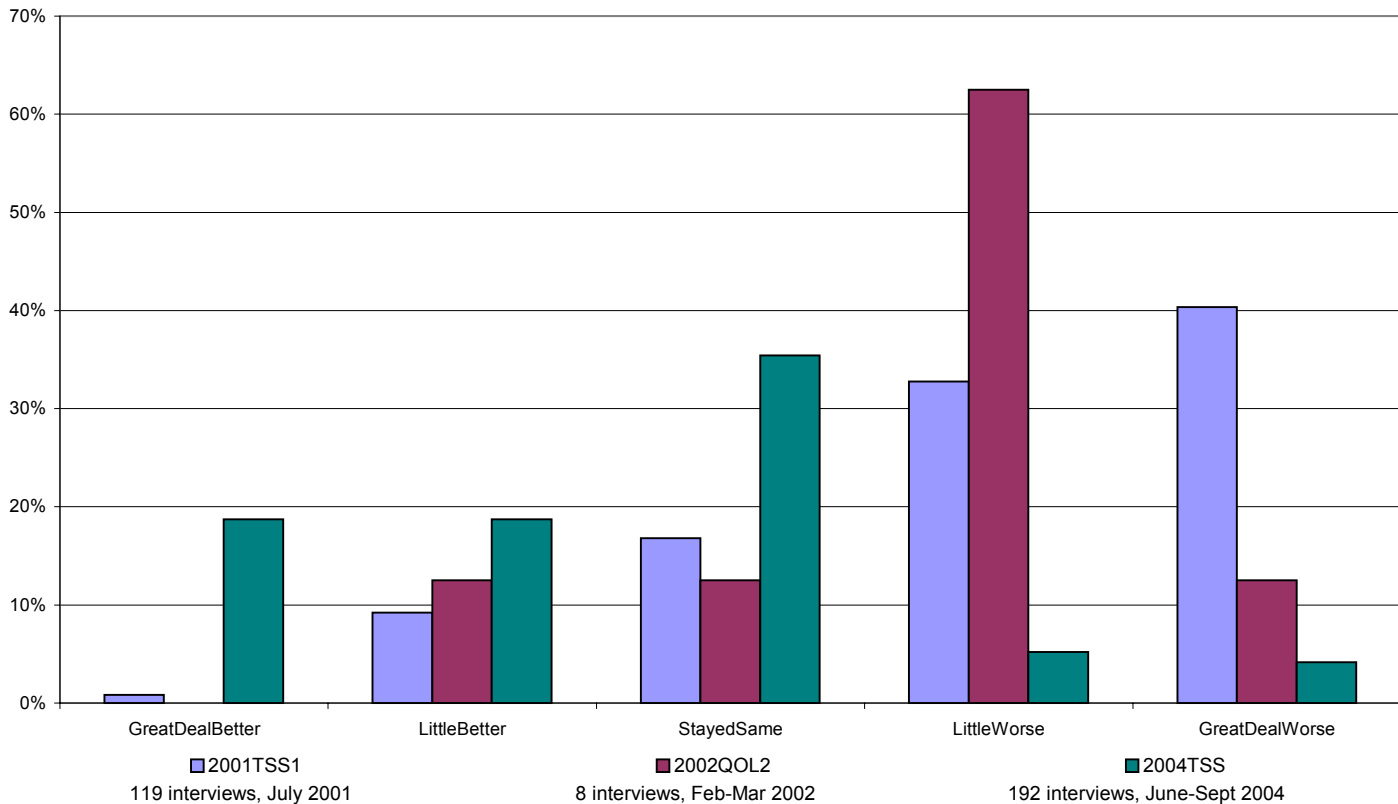
All	2001TSS1		2002QOL2		2002KB		2003SYHA		2004TSS	
	No.	%	No.	%	No.	%	No.	%	No.	%
GreatDeal Better	1	1%	0	0%	0	0%	4	2%	37	19%
LittleBetter	11	9%	6	10%	5	9%	51	21%	70	19%
StayedSame	20	17%	13	22%	12	21%	96	39%	68	35%
LittleWorse	39	33%	24	41%	15	26%	66	27%	8	4%
GreatDeal Worse	48	40%	16	27%	26	45%	31	13%	8	4%
Total	119	100%	59	100%	58	100%	248	100%	192	100%



Over the last 2 years how, if at all, has this area changed as a place to live?

Responses by geographical area - Tinsley

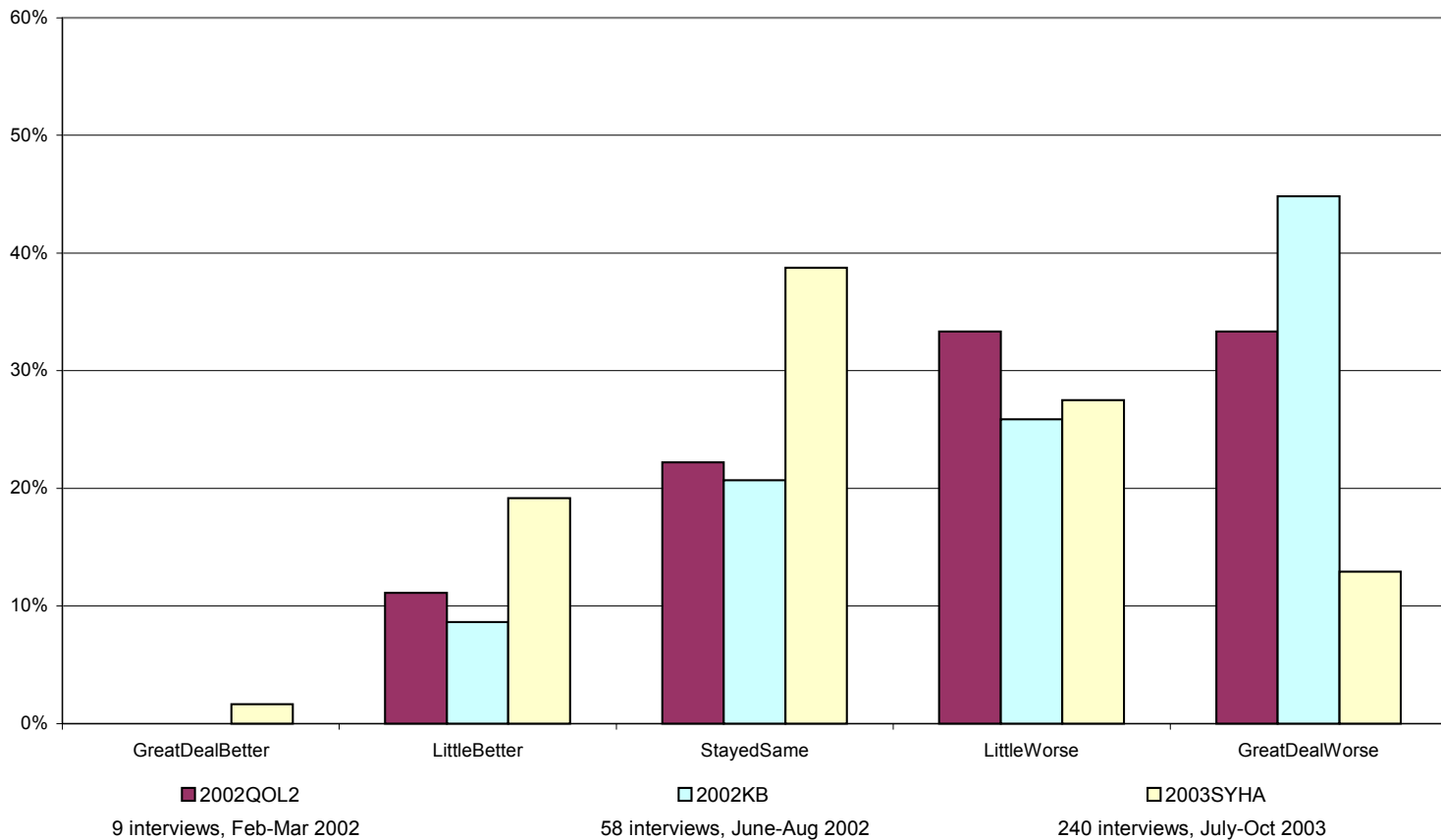
S9 1	2001TSS1		2002QOL2		2004TSS	
	No.	%	No.	%	No.	%
GreatDealBetter	1	1%	0	0%	37	19%
LittleBetter	11	9%	1	13%	70	19%
StayedSame	20	17%	1	13%	68	35%
LittleWorse	39	33%	5	63%	8	5%
GreatDealWorse	48	40%	1	13%	8	4%
Total	119	100%	8	100%	192	100%



Over the last 2 years how, if at all, has this area changed as a place to live?

Responses by geographical area - Darnall (Staniforth Road/Kettlebridge/Kashmir Gardens)

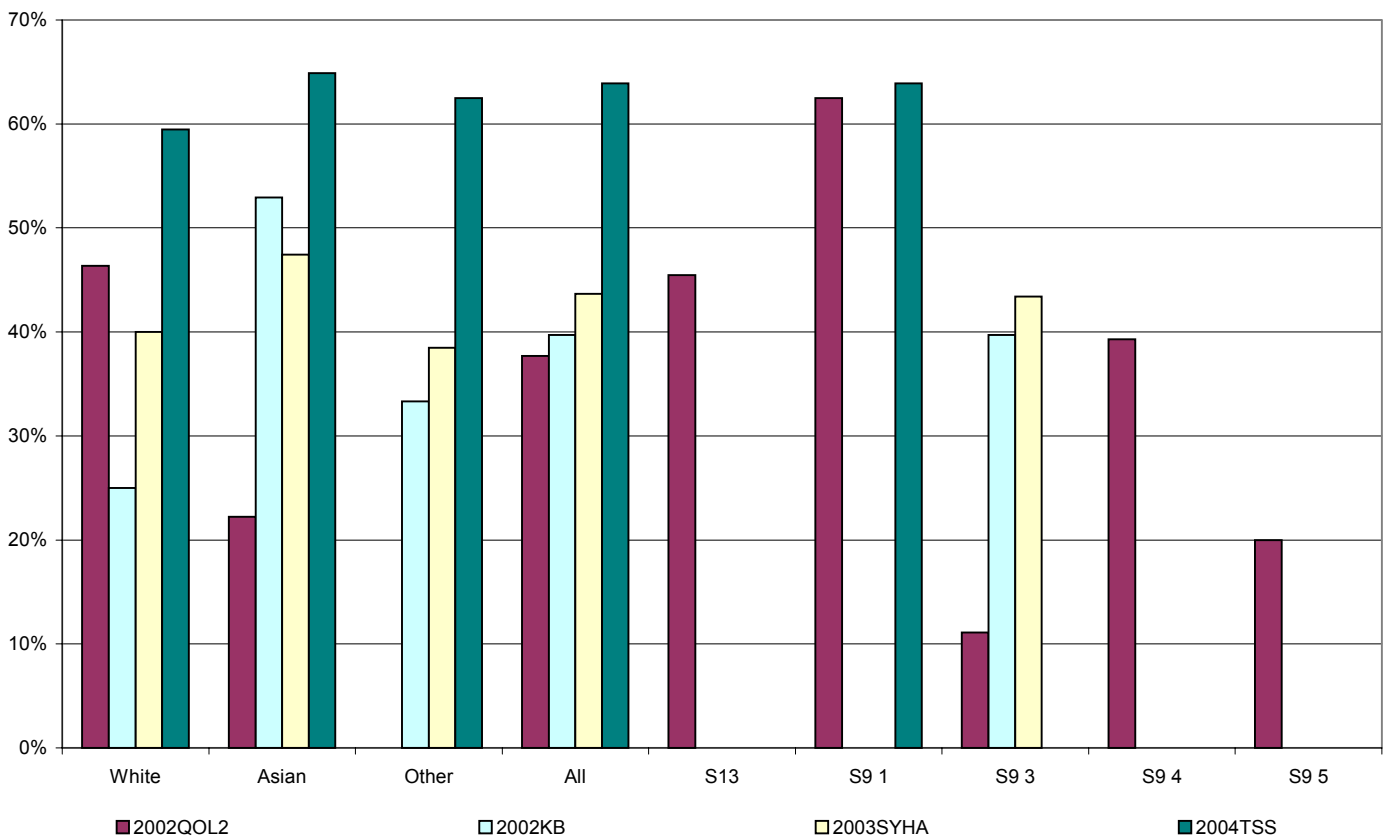
S9 3	2002QOL2		2002KB		2003SYHA	
	No.	%	No.	%	No.	%
GreatDealBetter	0	0%	0	0%	4	2%
LittleBetter	1	11%	5	9%	46	19%
StayedSame	2	22%	12	21%	93	39%
LittleWorse	3	33%	15	26%	66	28%
GreatDealWorse	3	33%	26	45%	31	13%
Total	9	100%	58	100%	240	100%



What do you most like about living in this area? (2 choices per respondent allowed)

Friendly people - responses by ethnic groups and geographical areas

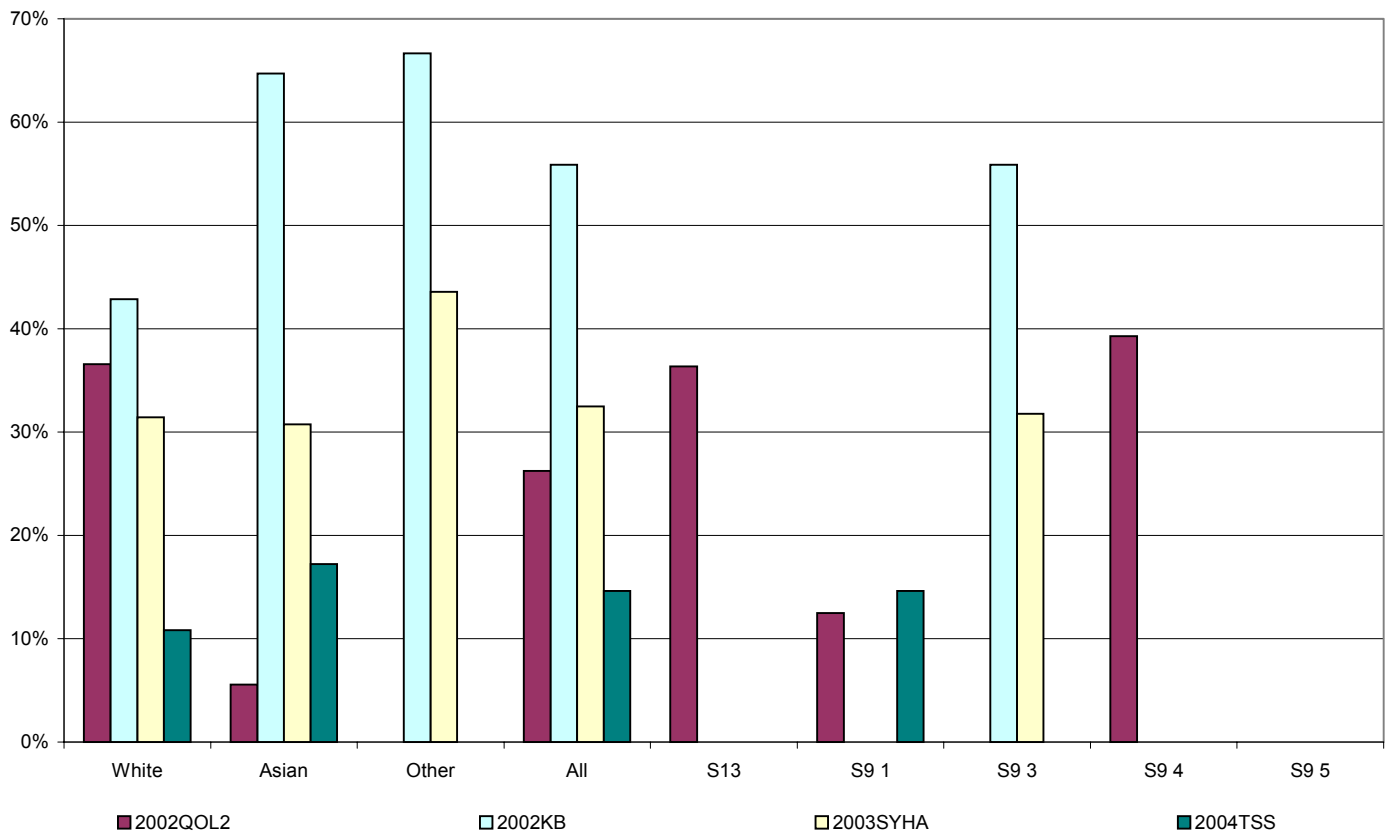
	2002QOL2			2002KB			2003SYHA			2004TSS		
	Total Ints.	No.	%ofTotal	Total Ints.	No.	%ofTotal	Total Ints.	No.	%ofTotal	Total Ints.	No.	%ofTotal
White	41	19	46%	28	7	25%	70	28	40%	37	22	59%
Asian	18	4	22%	34	18	53%	156	74	47%	151	98	65%
Other	-	-	-	6	2	33%	39	15	38%	16	10	63%
All	61	23	38%	68	27	40%	268	117	44%	205	131	64%
S13	11	5	45%	-	-	-	-	-	-	-	-	-
S9 1	8	5	63%	-	-	-	-	-	-	205	131	64%
S9 3	9	1	11%	68	27	40%	258	112	43%	-	-	-
S9 4	28	11	39%	-	-	-	-	-	-	-	-	-
S9 5	5	1	20%	-	-	-	-	-	-	-	-	-



What do you most like about living in this area? (2 choices per respondent allowed)

Good public transport - responses by ethnic groups and geographical areas

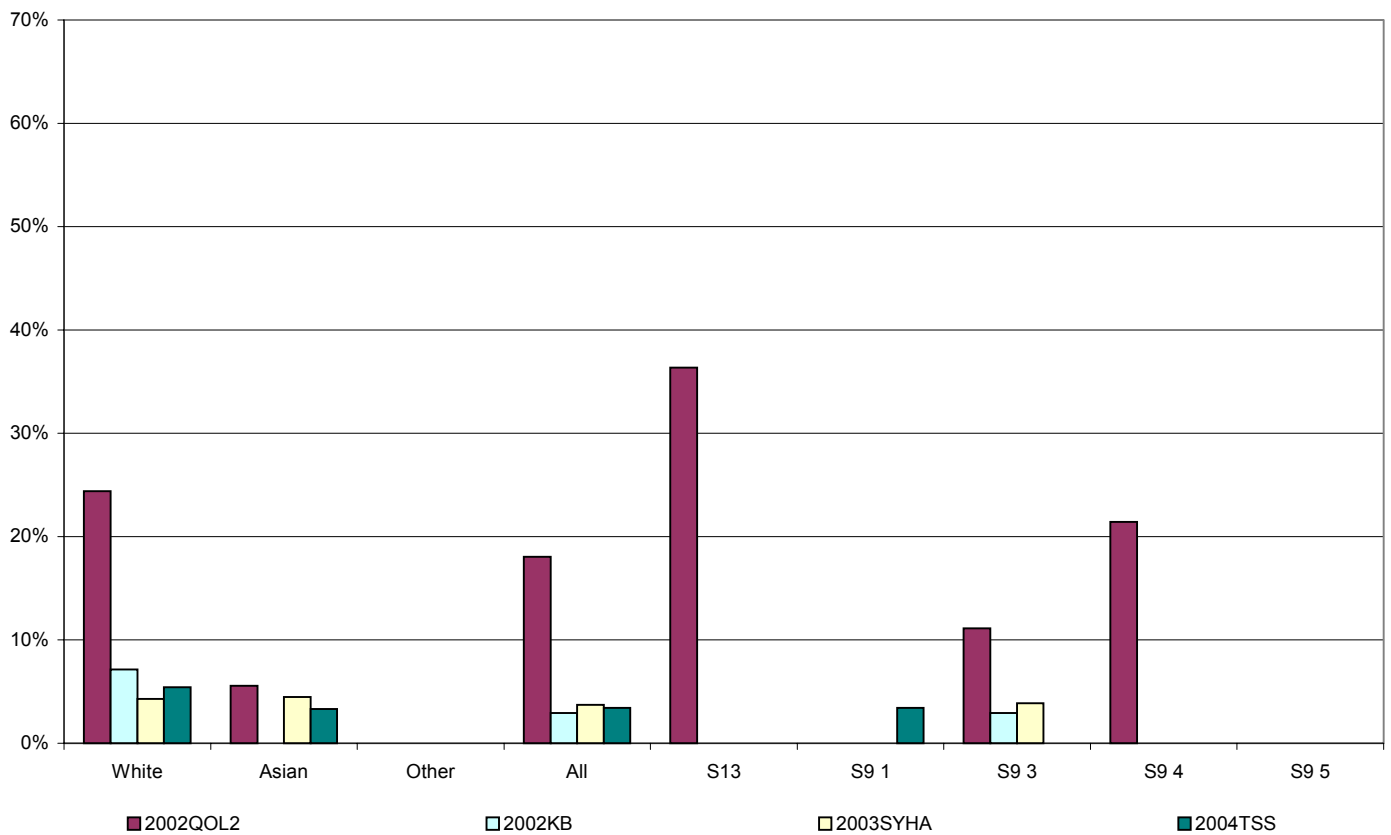
	2002QOL2			2002KB			2003SYHA			2004TSS		
	Total Ints.	No.	%ofTotal	Total Ints.	No.	%ofTotal	Total Ints.	No.	%ofTotal	Total Ints.	No.	%ofTotal
White	41	15	37%	28	12	43%	70	22	31%	37	4	11%
Asian	18	1	6%	34	22	65%	156	48	31%	151	26	17%
Other	-	-	-	6	4	67%	39	17	44%	16	0	0%
All	61	16	26%	68	38	56%	268	87	32%	205	30	15%
S13	11	4	36%	-	-	-	-	-	-	-	-	-
S9 1	8	1	13%	-	-	-	-	-	-	205	30	15%
S9 3	9	0	0%	68	38	56%	258	82	32%	-	-	-
S9 4	28	11	39%	-	-	-	-	-	-	-	-	-
S9 5	5	0	0%	-	-	-	-	-	-	-	-	-



What do you most like about living in this area? (2 choices per respondent allowed)

Good gardens - responses by ethnic groups and geographical areas

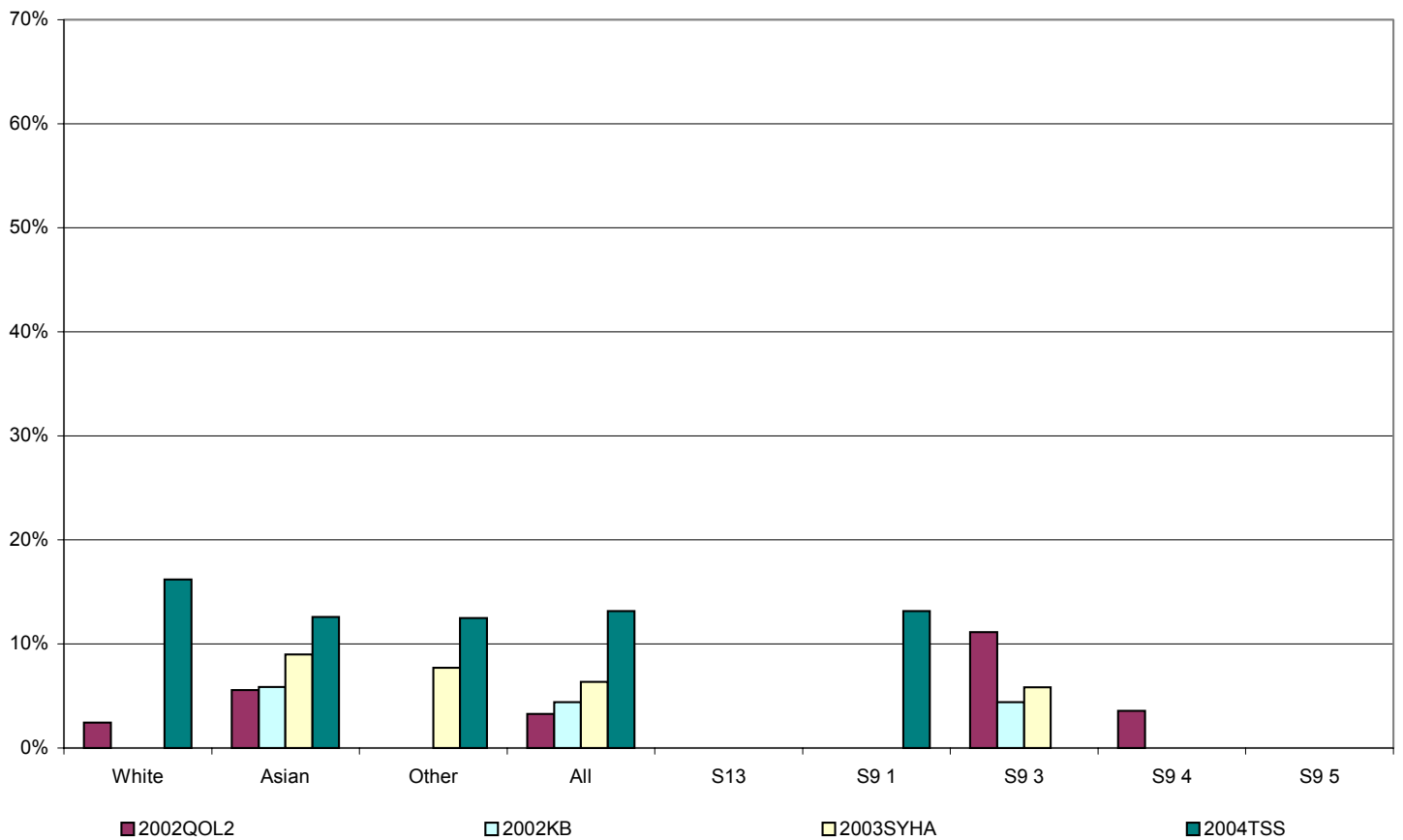
	2002QOL2			2002KB			2003SYHA			2004TSS		
	Total Ints.	No.	%ofTotal	Total Ints.	No.	%ofTotal	Total Ints.	No.	%ofTotal	Total Ints.	No.	%ofTotal
White	41	10	24%	28	2	7%	70	3	4%	37	2	5%
Asian	18	1	6%	34	0	0%	156	7	4%	151	5	3%
Other	-	-	-	6	0	0%	39	0	0%	16	0	0%
All	61	11	18%	68	2	3%	268	10	4%	205	7	3%
S13	11	4	36%	-	-	-	-	-	-	-	-	-
S9 1	8	0	0%	-	-	-	-	-	-	205	7	3%
S9 3	9	1	11%	68	2	3%	258	10	4%	-	-	-
S9 4	28	6	21%	-	-	-	-	-	-	-	-	-
S9 5	5	0	0%	-	-	-	-	-	-	-	-	-



What do you most like about living in this area? (2 choices per respondent allowed)

Community activities - responses by ethnic groups and geographical areas

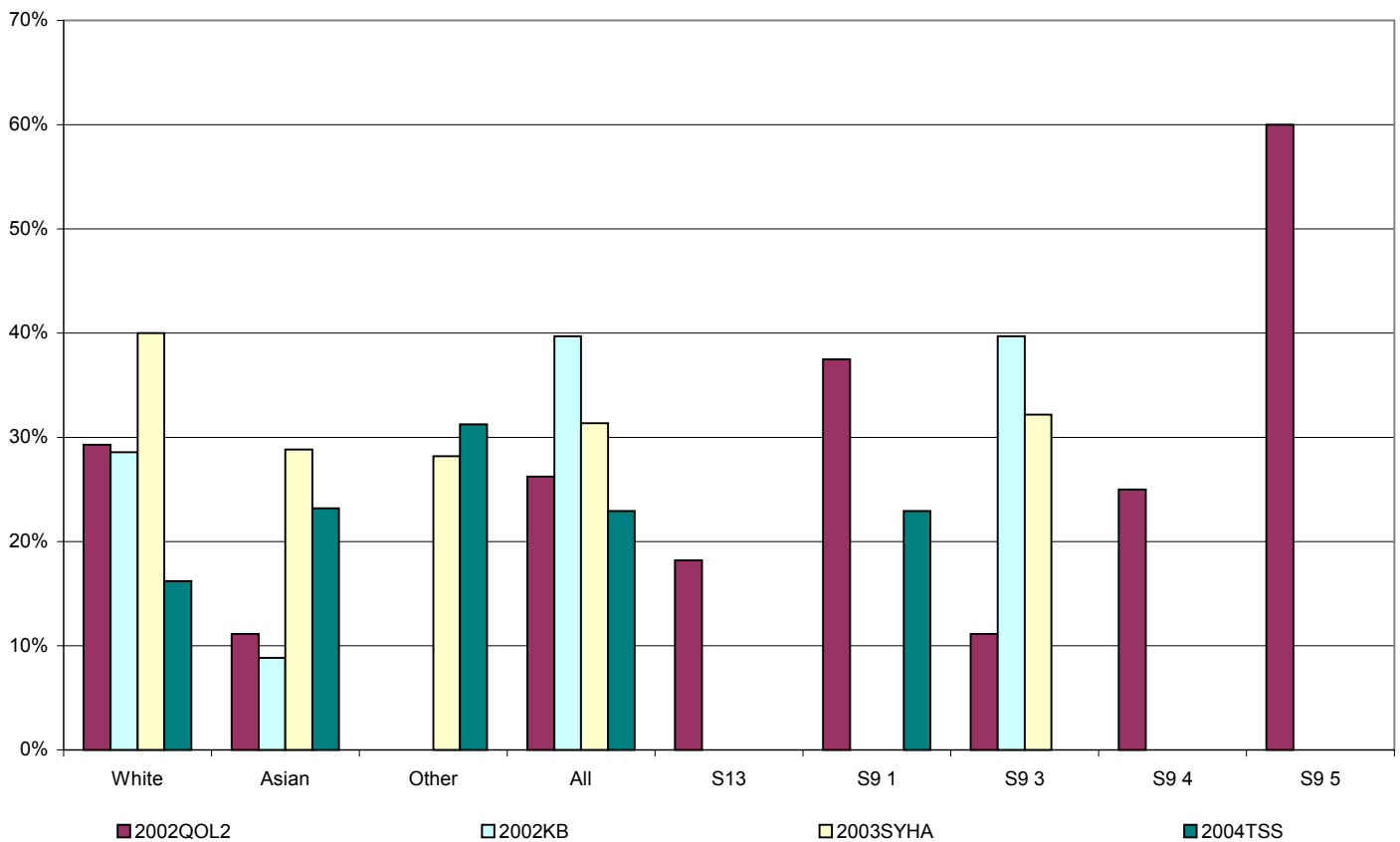
	2002QOL2			2002KB			2003SYHA			2004TSS		
	Total Ints.	No.	%ofTotal	Total Ints.	No.	%ofTotal	Total Ints.	No.	%ofTotal	Total Ints.	No.	%ofTotal
White	41	1	2%	28	0	0%	70	0	0%	37	6	16%
Asian	18	1	6%	34	2	6%	156	14	9%	151	19	13%
Other	-	-	-	6	0	0%	39	3	8%	16	2	13%
All	61	2	3%	68	3	4%	268	17	6%	205	27	13%
S13	11	0	0%	-	-	-	-	-	-	-	-	-
S9 1	8	0	0%	-	-	-	-	-	-	205	27	13%
S9 3	9	1	11%	68	3	4%	258	15	6%	-	-	-
S9 4	28	1	4%	-	-	-	-	-	-	-	-	-
S9 5	5	0	0%	-	-	-	-	-	-	-	-	-



What do you most like about living in this area? (2 choices per respondent allowed)

My neighbours - responses by ethnic groups and geographical areas

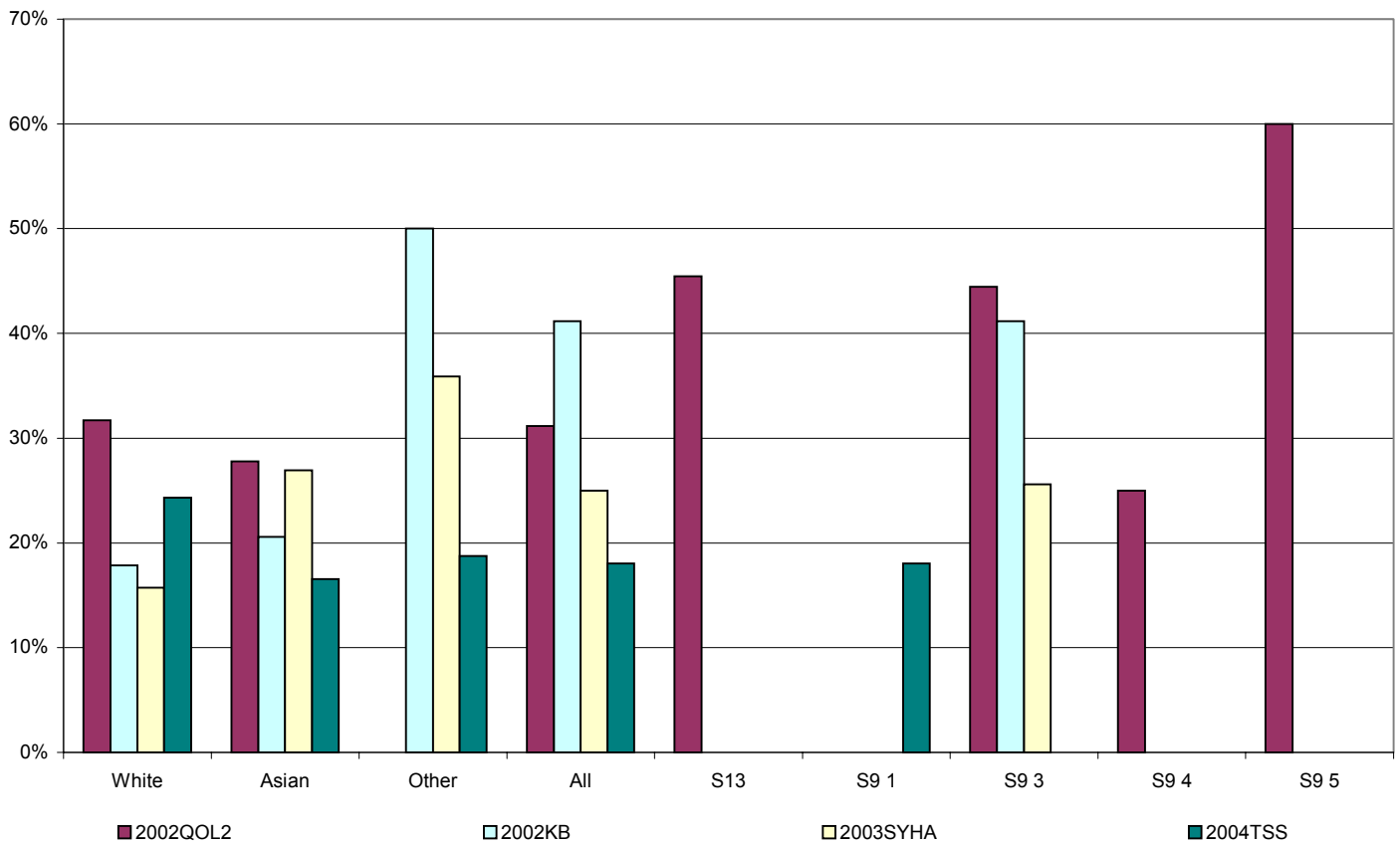
	2002QOL2			2002KB			2003SYHA			2004TSS		
	Total Ints.	No.	%ofTotal	Total Ints.	No.	%ofTotal	Total Ints.	No.	%ofTotal	Total Ints.	No.	%ofTotal
White	41	12	29%	28	8	29%	70	28	40%	37	6	16%
Asian	18	2	11%	34	3	9%	156	45	29%	151	35	23%
Other	-	-	-	6	0	0%	39	11	28%	16	5	31%
All	61	16	26%	68	27	40%	268	84	31%	205	47	23%
S13	11	2	18%	-	-	-	-	-	-	-	-	-
S9 1	8	3	38%	-	-	-	-	-	-	205	47	23%
S9 3	9	1	11%	68	27	40%	258	83	32%	-	-	-
S9 4	28	7	25%	-	-	-	-	-	-	-	-	-
S9 5	5	3	60%	-	-	-	-	-	-	-	-	-



What do you most like about living in this area? (2 choices per respondent allowed)

Close to shops and amenities - responses by ethnic groups and geographical areas

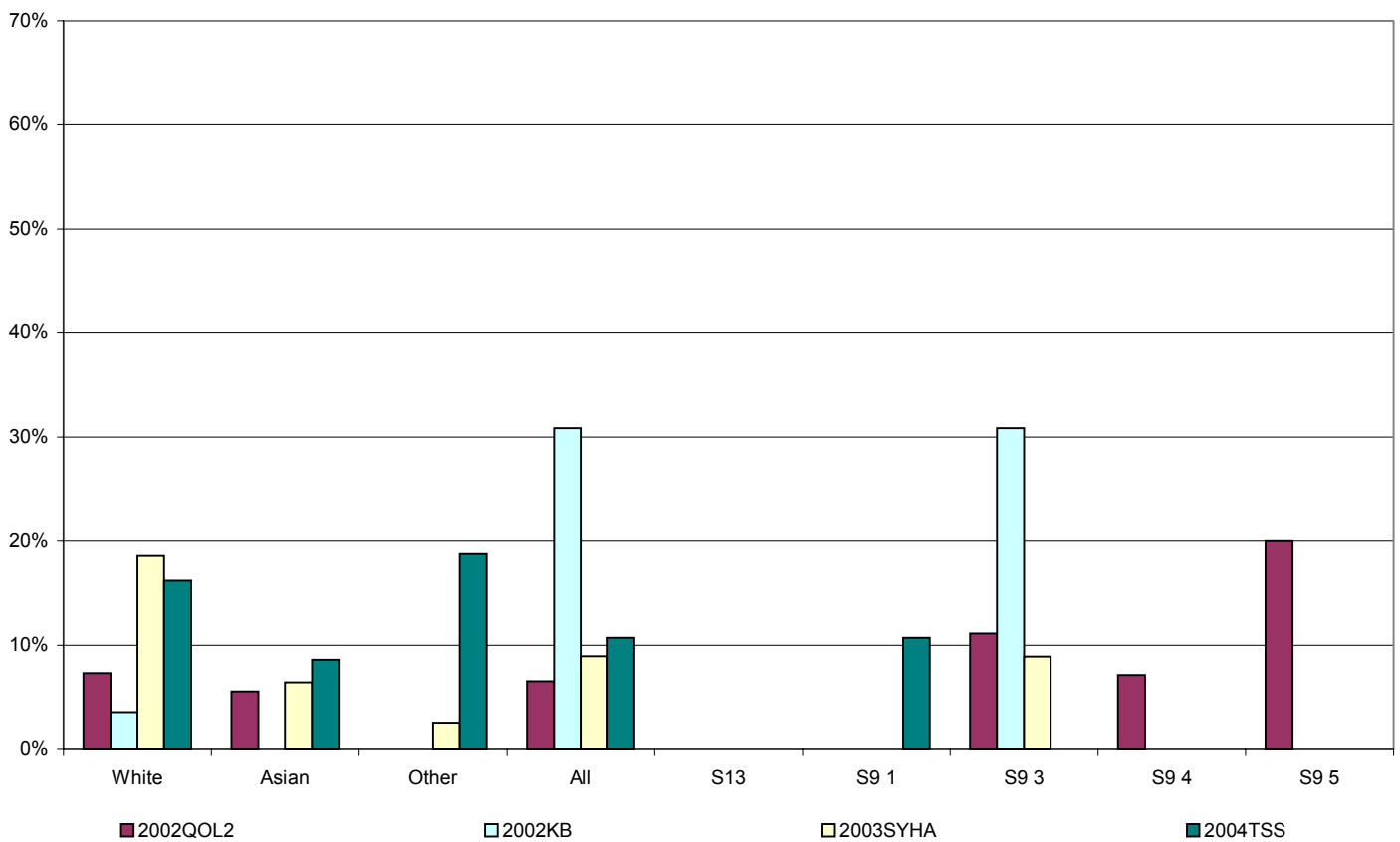
	2002QOL2			2002KB			2003SYHA			2004TSS		
	Total Ints.	No.	%ofTotal	Total Ints.	No.	%ofTotal	Total Ints.	No.	%ofTotal	Total Ints.	No.	%ofTotal
White	41	13	32%	28	5	18%	70	11	16%	37	9	24%
Asian	18	5	28%	34	7	21%	156	42	27%	151	25	17%
Other	-	-	-	6	3	50%	39	14	36%	16	3	19%
All	61	19	31%	68	28	41%	268	67	25%	205	37	18%
S13	11	5	45%	-	-	-	-	-	-	-	-	-
S9 1	8	0	0%	-	-	-	-	-	-	205	37	18%
S9 3	9	4	44%	68	28	41%	258	66	26%	-	-	-
S9 4	28	7	25%	-	-	-	-	-	-	-	-	-
S9 5	5	3	60%	-	-	-	-	-	-	-	-	-



What do you most like about living in this area? (2 choices per respondent allowed)

Good doctors - responses by ethnic groups and geographical areas

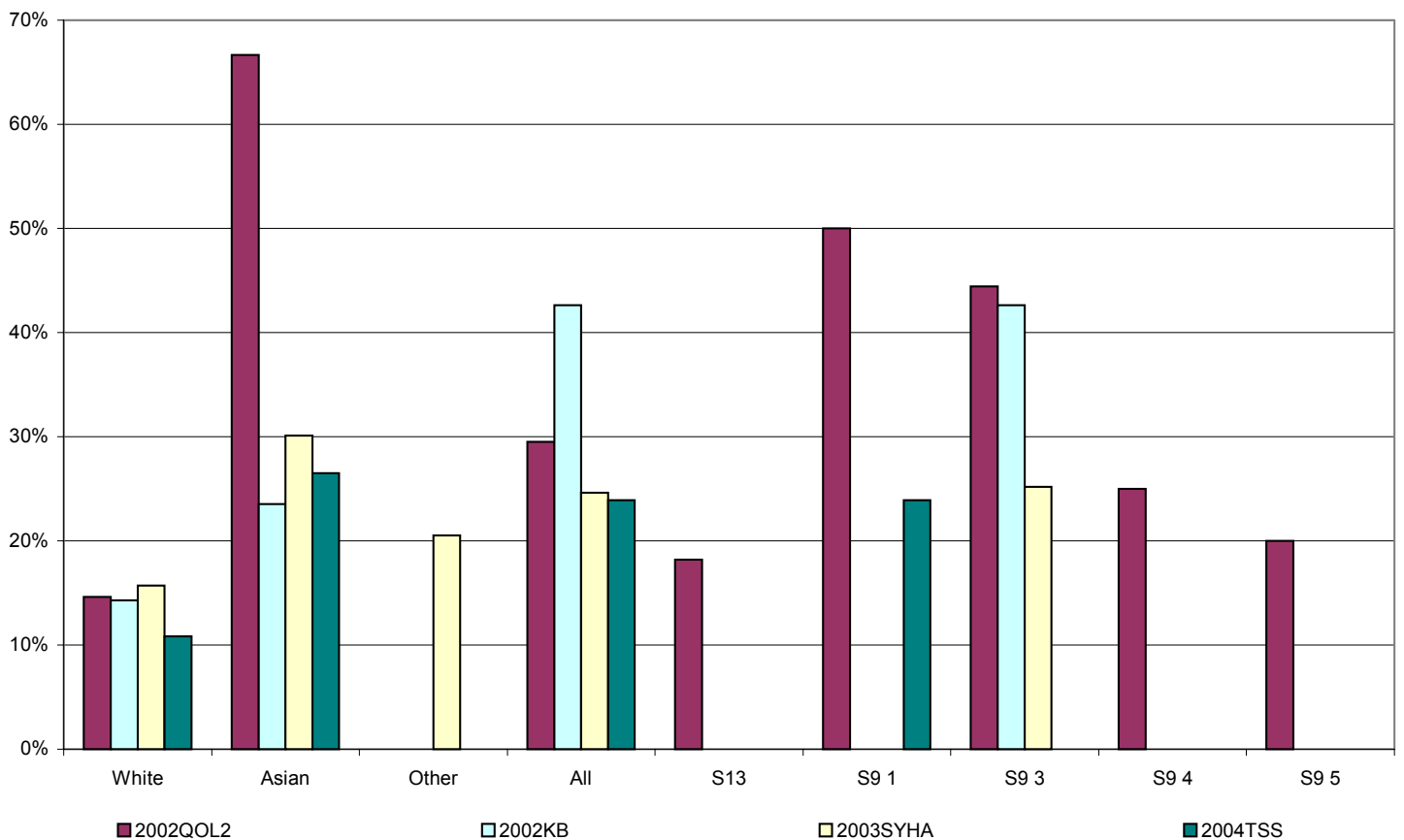
	2002QOL2			2002KB			2003SYHA			2004TSS		
	Total Ints.	No.	%ofTotal	Total Ints.	No.	%ofTotal	Total Ints.	No.	%ofTotal	Total Ints.	No.	%ofTotal
White	41	3	7%	28	1	4%	70	13	19%	37	6	16%
Asian	18	1	6%	34	0	0%	156	10	6%	151	13	9%
Other	-	-	-	6	0	0%	39	1	3%	16	3	19%
All	61	4	7%	68	21	31%	268	24	9%	205	22	11%
S13	11	0	0%	-	-	-	-	-	-	-	-	-
S9 1	8	0	0%	-	-	-	-	-	-	205	22	11%
S9 3	9	1	11%	68	21	31%	258	23	9%	-	-	-
S9 4	28	2	7%	-	-	-	-	-	-	-	-	-
S9 5	5	1	20%	-	-	-	-	-	-	-	-	-



What do you most like about living in this area? (2 choices per respondent allowed)

Close to family - responses by ethnic groups and geographical areas

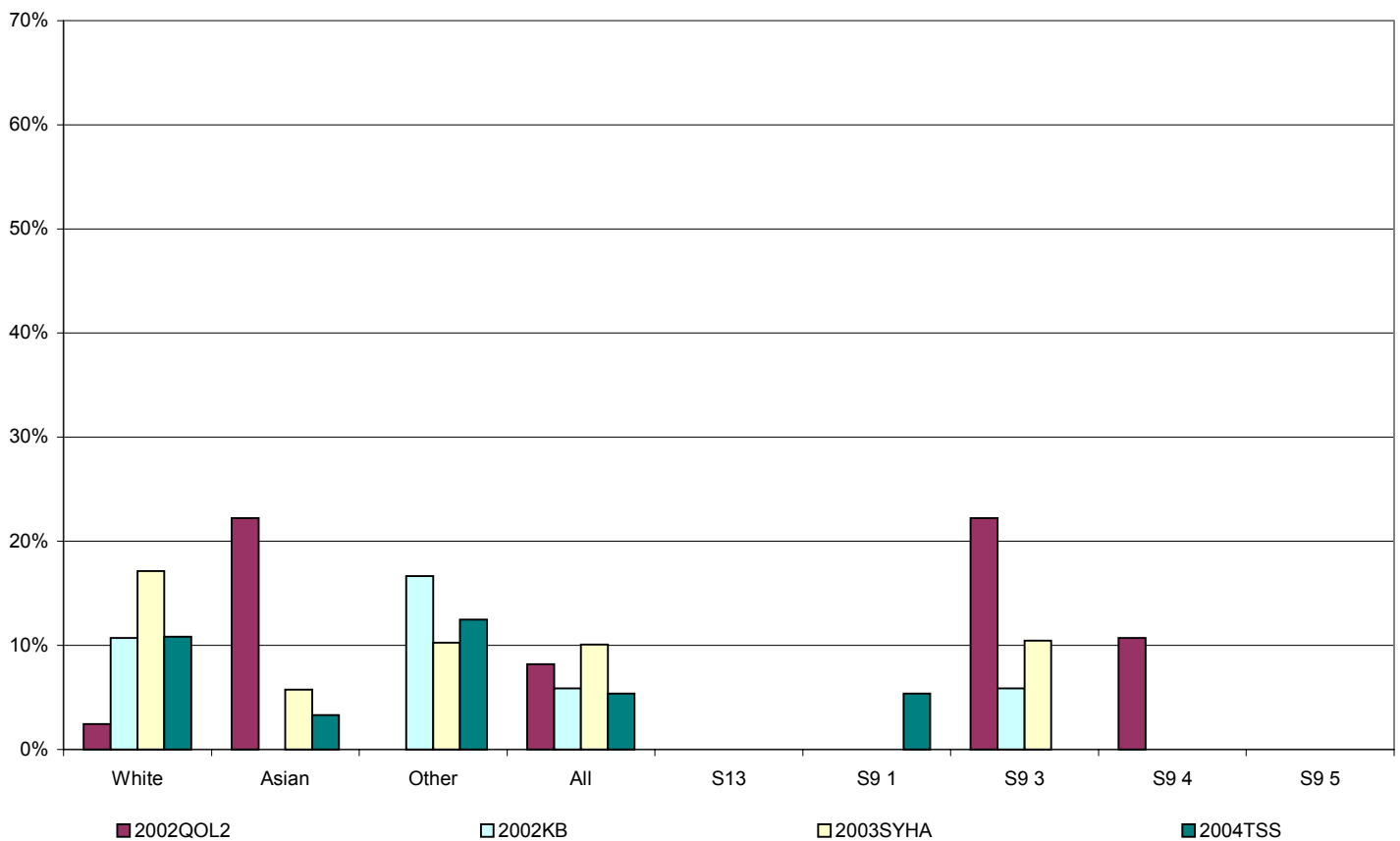
	2002QOL2			2002KB			2003SYHA			2004TSS		
	Total Ints.	No.	%ofTotal	Total Ints.	No.	%ofTotal	Total Ints.	No.	%ofTotal	Total Ints.	No.	%ofTotal
White	41	6	15%	28	4	14%	70	11	16%	37	4	11%
Asian	18	12	67%	34	8	24%	156	47	30%	151	40	26%
Other	-	-	-	6	0	0%	39	8	21%	16	0	0%
All	61	18	30%	68	29	43%	268	66	25%	205	49	24%
S13	11	2	18%	-	-	-	-	-	-	-	-	-
S9 1	8	4	50%	-	-	-	-	-	-	205	49	24%
S9 3	9	4	44%	68	29	43%	258	65	25%	-	-	-
S9 4	28	7	25%	-	-	-	-	-	-	-	-	-
S9 5	5	1	20%	-	-	-	-	-	-	-	-	-



What do you most like about living in this area? (2 choices per respondent allowed)

Nothing - responses by ethnic groups and geographical areas

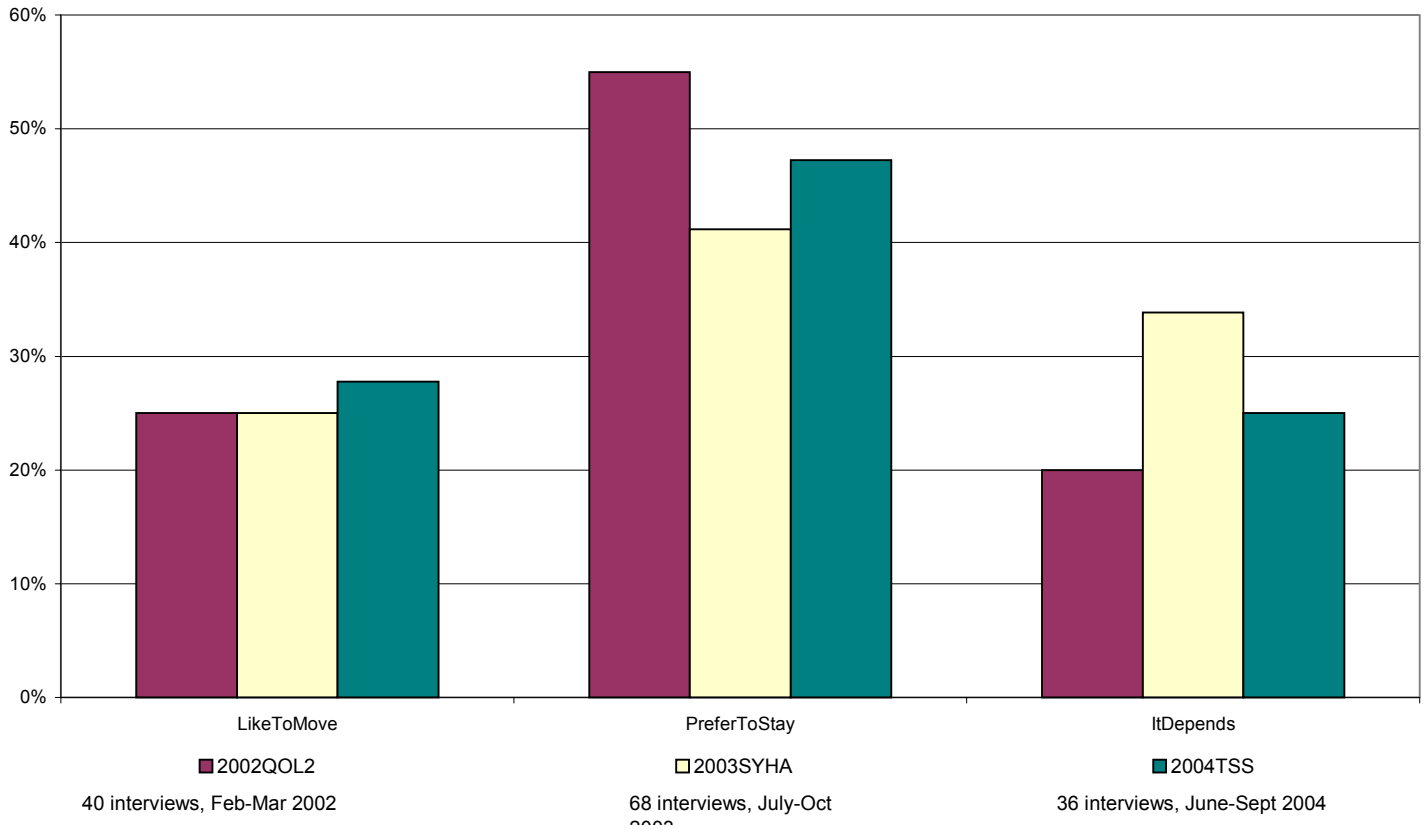
	2002QOL2			2002KB			2003SYHA			2004TSS		
	Total Ints.	No.	%ofTotal	Total Ints.	No.	%ofTotal	Total Ints.	No.	%ofTotal	Total Ints.	No.	%ofTotal
White	41	1	2%	28	3	11%	70	12	17%	37	4	11%
Asian	18	4	22%	34	0	0%	156	9	6%	151	5	3%
Other	-	-	-	6	1	17%	39	4	10%	16	2	13%
All	61	5	8%	68	4	6%	268	27	10%	205	11	5%
S13	11	0	0%	-	-	-	-	-	-			#DIV/0!
S9 1	8	0	0%	-	-	-	-	-	-	205	11	5%
S9 3	9	2	22%	68	4	6%	258	27	10%			
S9 4	28	3	11%	-	-	-	-	-	-			
S9 5	5	0	0%	-	-	-	-	-	-			



If you had a free choice, would you like to move out of this area, or would you prefer to stay?

Responses by ethnic group - White

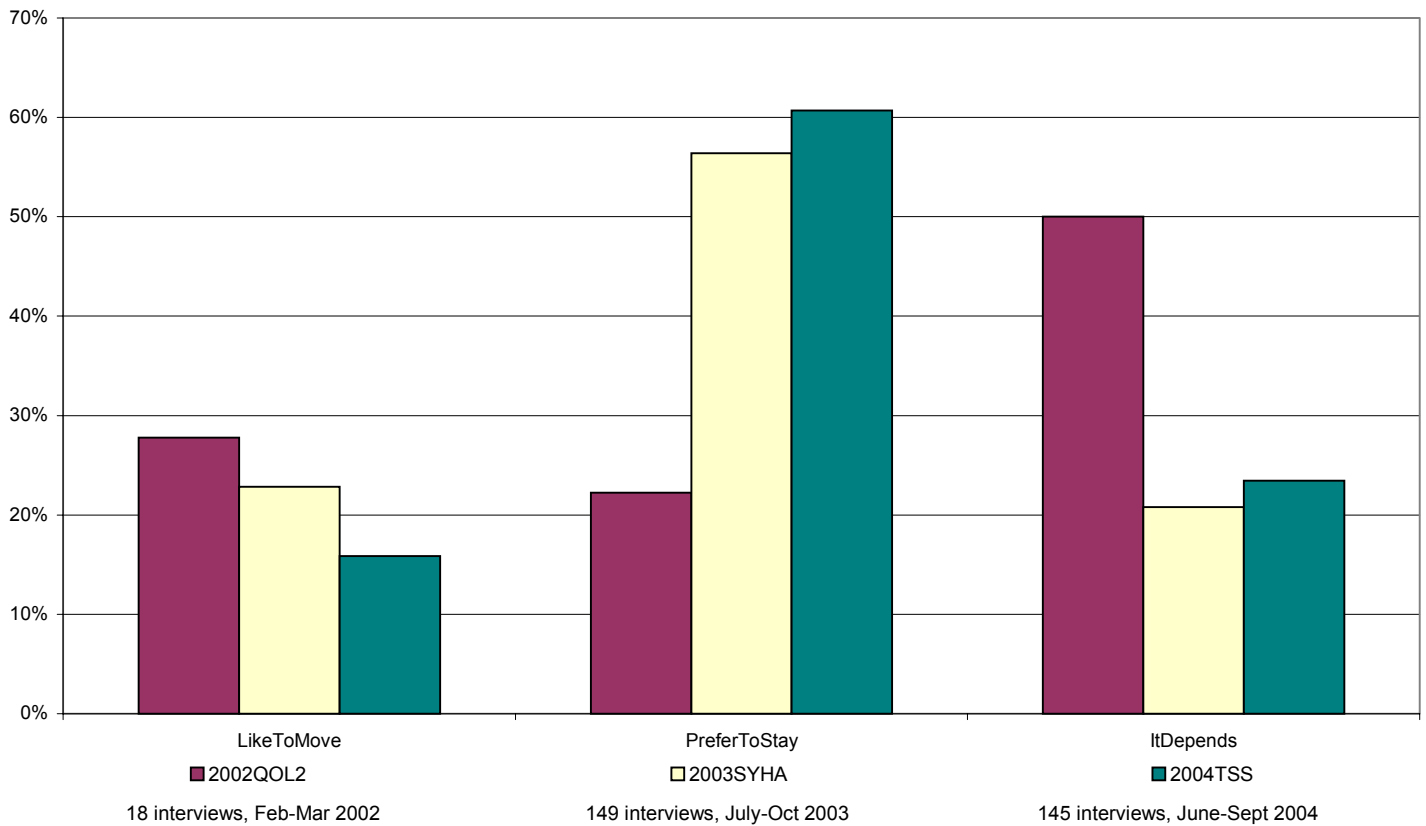
White	2002QOL2		2003SYHA		2004TSS	
	No.	%	No.	%	No.	%
LikeToMove	10	25%	17	25%	10	28%
PreferToStay	22	55%	28	41%	17	47%
ItDepends	8	20%	23	34%	9	25%
Total	40	100%	68	100%	36	100%



If you had a free choice, would you like to move out of this area, or would you prefer to stay?

Responses by ethnic group - Asian

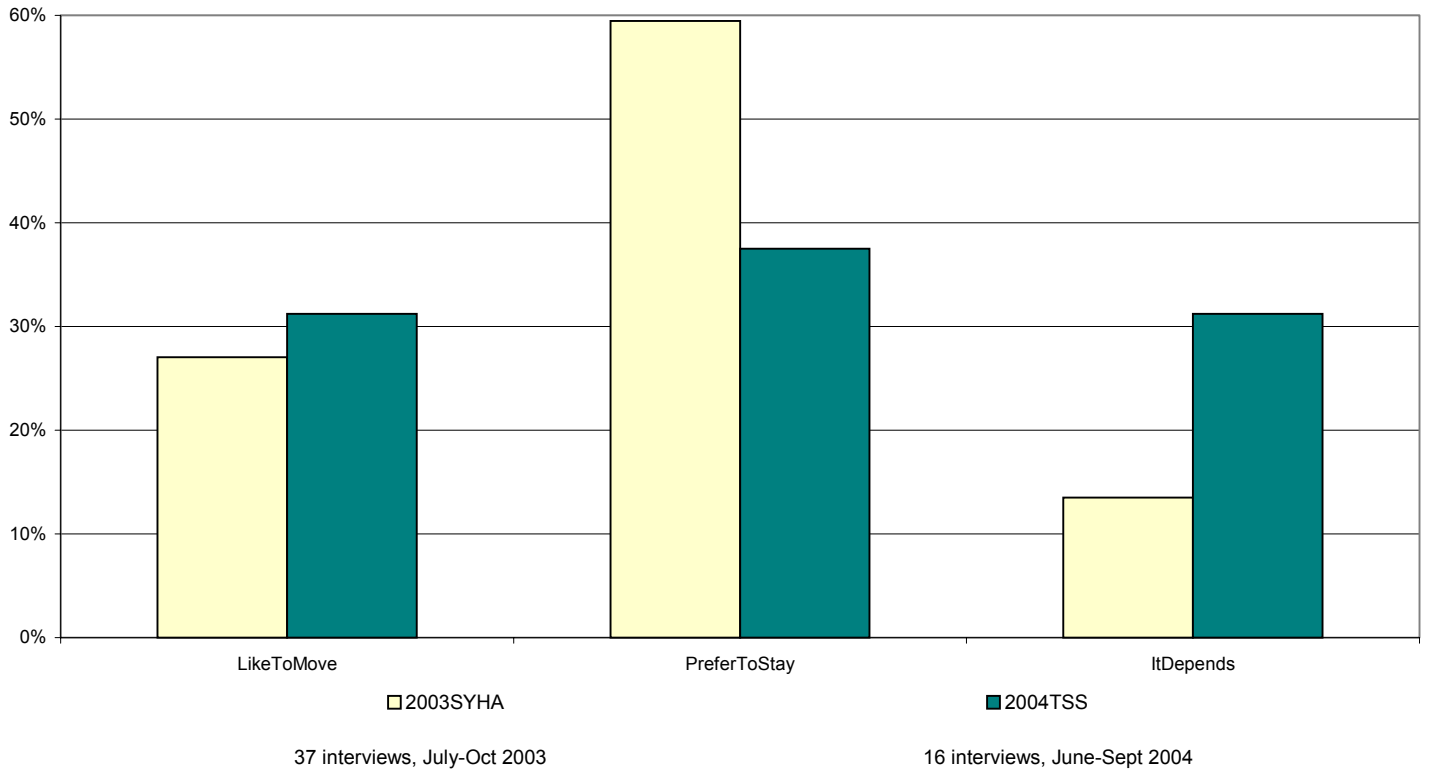
Asian	2002QOL2		2003SYHA		2004TSS	
	No.	%	No.	%	No.	%
LikeToMove	5	28%	34	23%	23	16%
PreferToStay	4	22%	84	56%	88	61%
ItDepends	9	50%	31	21%	34	23%
Total	18	100%	149	100%	145	100%



If you had a free choice, would you like to move out of this area, or would you prefer to stay?

Responses by ethnic group - Other

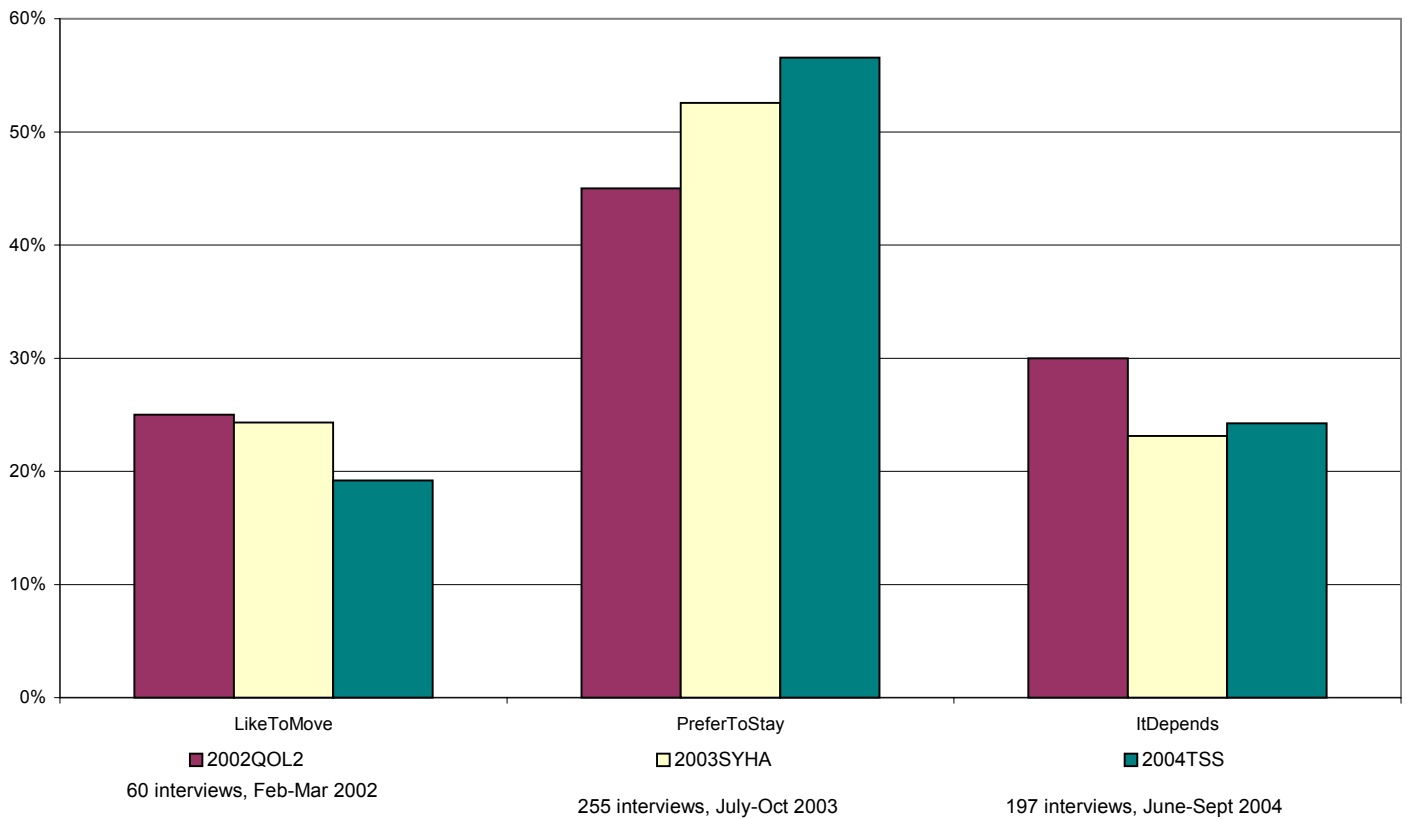
Other	2003SYHA		2004TSS	
	No.	%	No.	%
LikeToMove	10	27%	5	31%
PreferToStay	22	59%	6	38%
ItDepends	5	14%	5	31%
Total	37	100%	16	100%



If you had a free choice, would you like to move out of this area, or would you prefer to stay?

All respondents

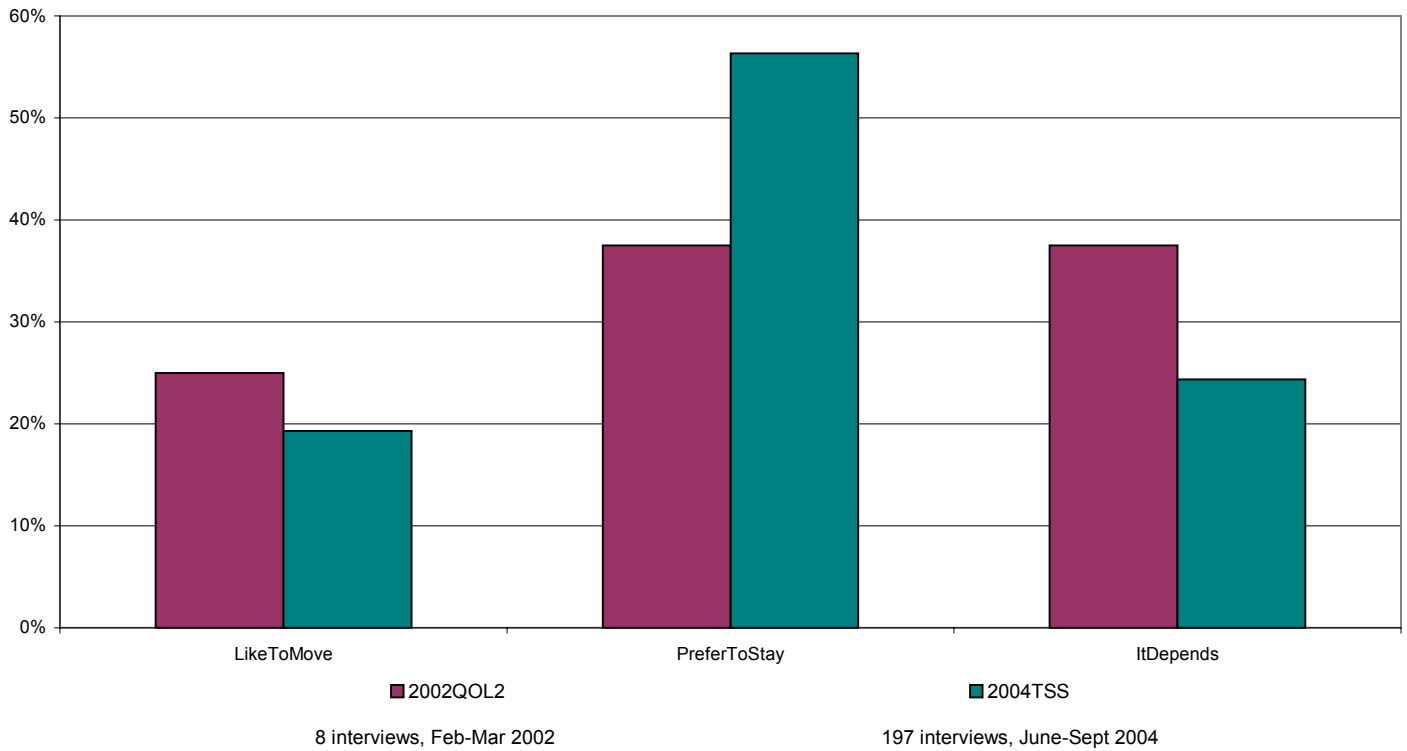
All	2002QOL2		2003SYHA		2004TSS	
	No.	%	No.	%	No.	%
LikeToMove	15	25%	62	24%	38	19%
PreferToStay	27	45%	134	53%	112	57%
ItDepends	18	30%	59	23%	48	24%
Total	60	100%	255	100%	198	100%



If you had a free choice, would you like to move out of this area, or would you prefer to stay?

Responses by geographical area - Tinsley

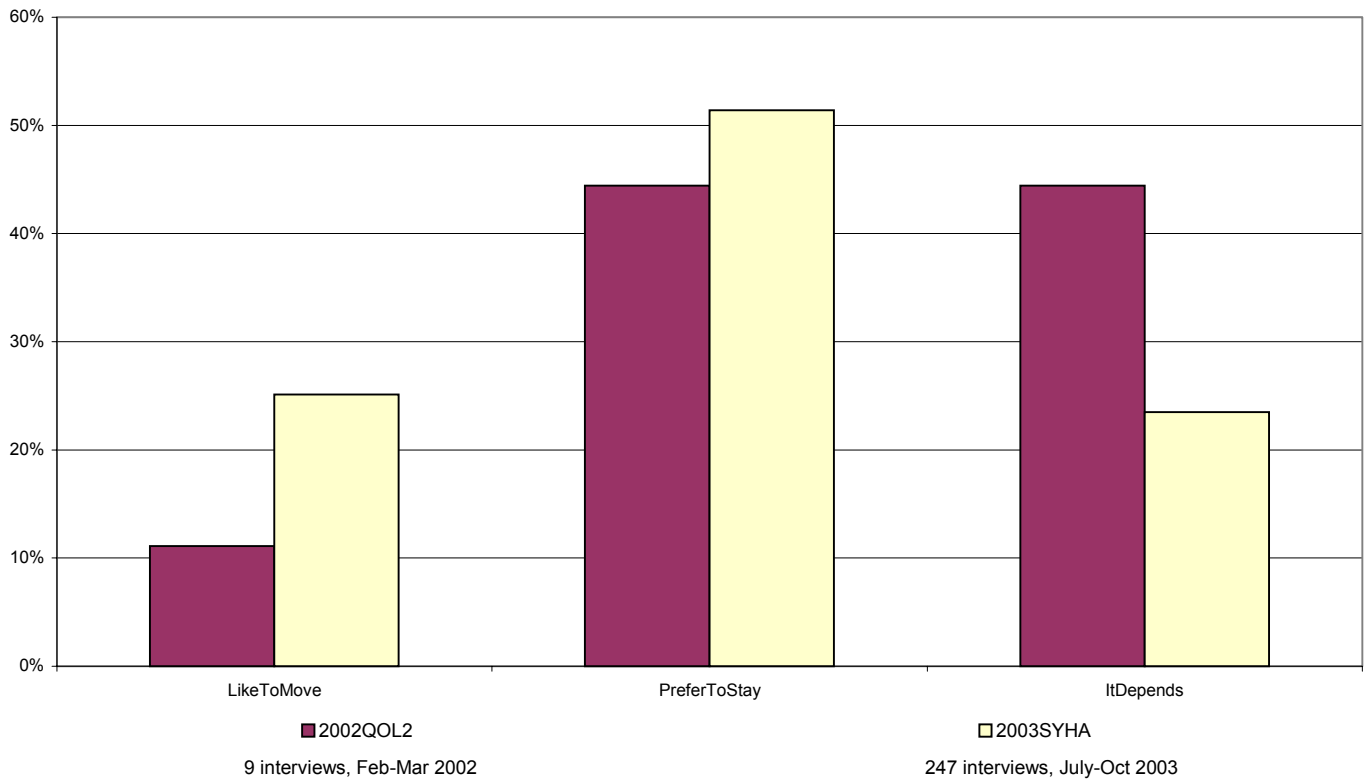
S9 1	2002QOL2		2004TSS	
	No.	%	No.	%
LikeToMove	2	25%	38	19%
PreferToStay	3	38%	112	56%
ItDepends	3	38%	48	24%
Total	8	100%	198	100%



If you had a free choice, would you like to move out of this area, or would you prefer to stay?

Responses by geographical area - Darnall (Staniforth Road/Kettlebridge/Kashmir Gardens)

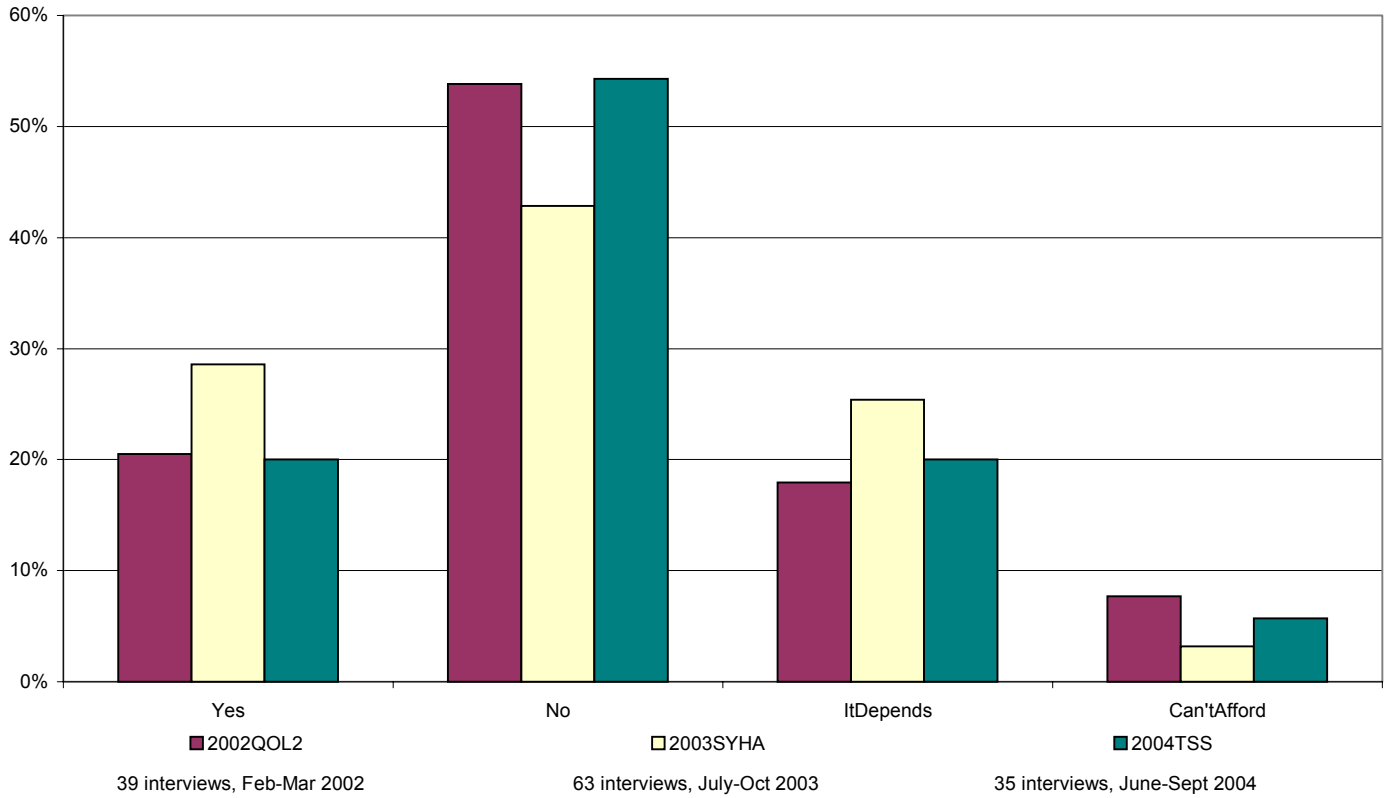
S9 3	2002QOL2		2003SYHA	
	No.	%	No.	%
LikeToMove	1	11%	62	25%
PreferToStay	4	44%	127	51%
ItDepends	4	44%	58	23%
Total	9	100%	247	100%



Looking ahead, are you likely to move out of this area in the next 3 years?

Responses by ethnic group - White

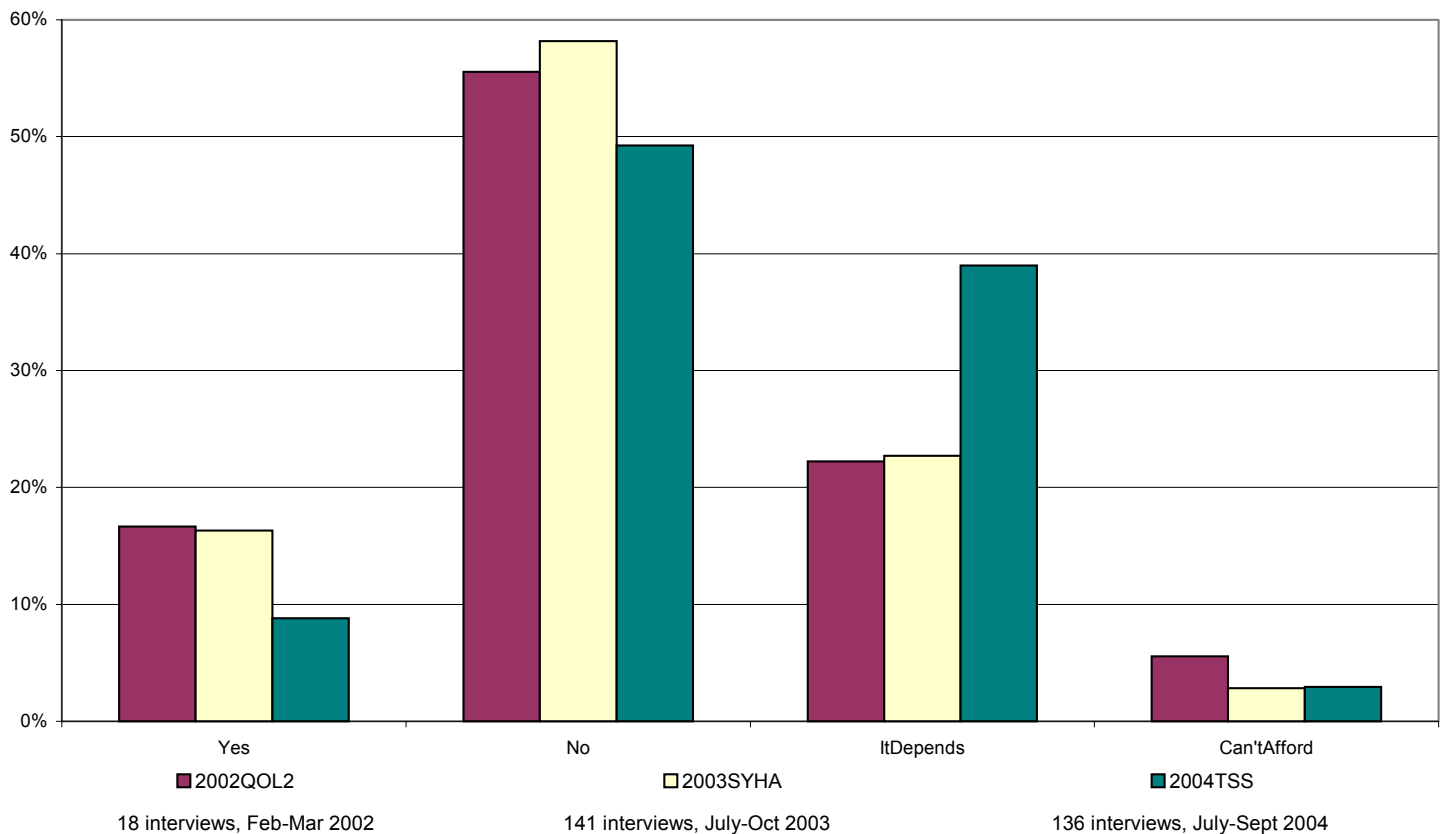
White	2002QOL2		2003SYHA		2004TSS	
	No.	%	No.	%	No.	%
Yes	8	21%	18	29%	7	20%
No	21	54%	27	43%	19	54%
ItDepends	7	18%	16	25%	7	20%
Can'tAfford	3	8%	2	3%	2	6%
Total	39	100%	63	100%	35	100%



Looking ahead, are you likely to move out of this area in the next 3 years?

Responses by ethnic group - Asian

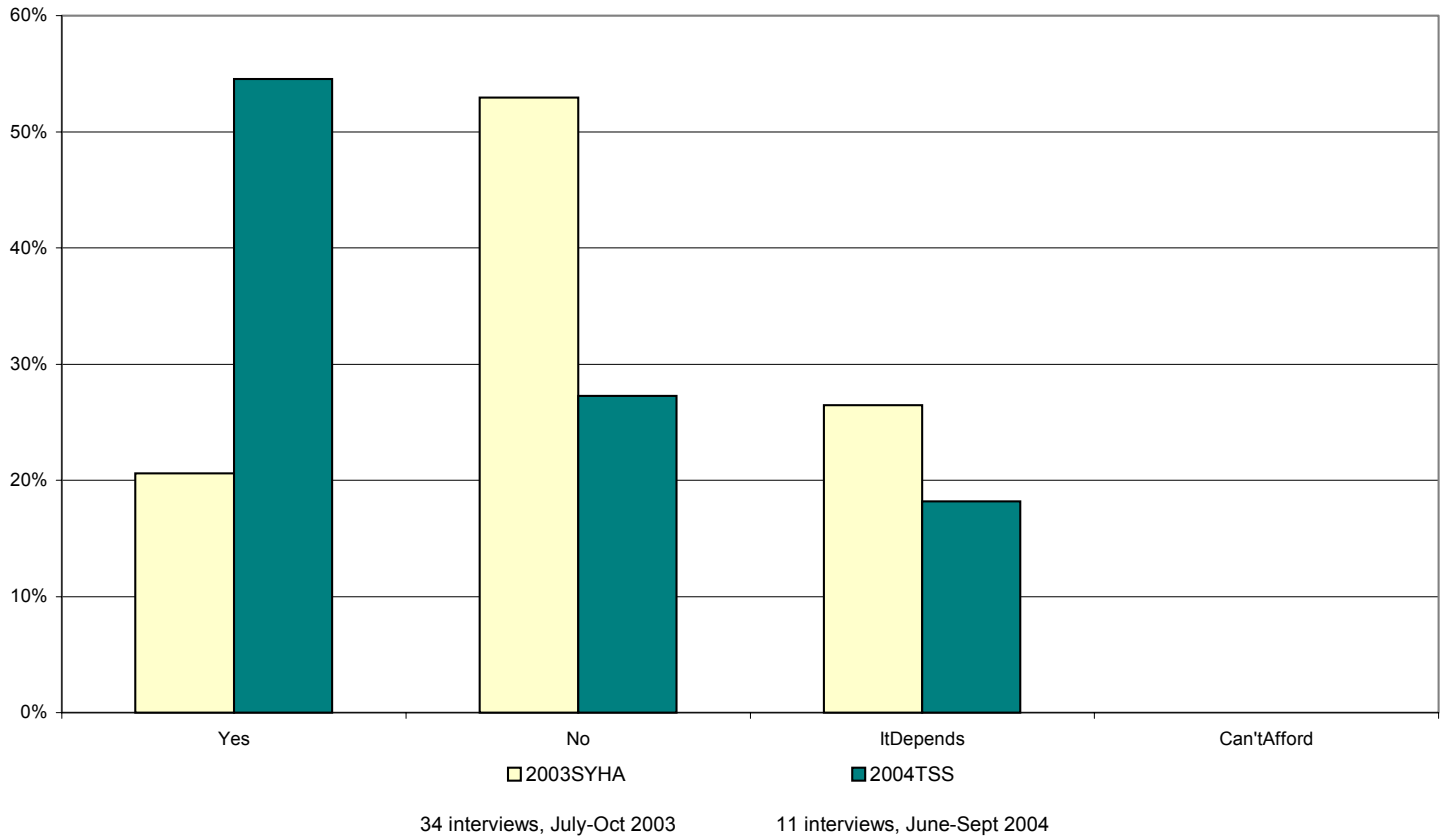
Asian	2002QOL2		2003SYHA		2004TSS	
	No.	%	No.	%	No.	%
Yes	3	17%	23	16%	12	9%
No	10	56%	82	58%	67	49%
ItDepends	4	22%	32	23%	53	39%
Can'tAfford	1	6%	4	3%	4	3%
Total	18	100%	141	100%	136	100%



Looking ahead, are you likely to move out of this area in the next 3 years?

Responses by ethnic group - Other

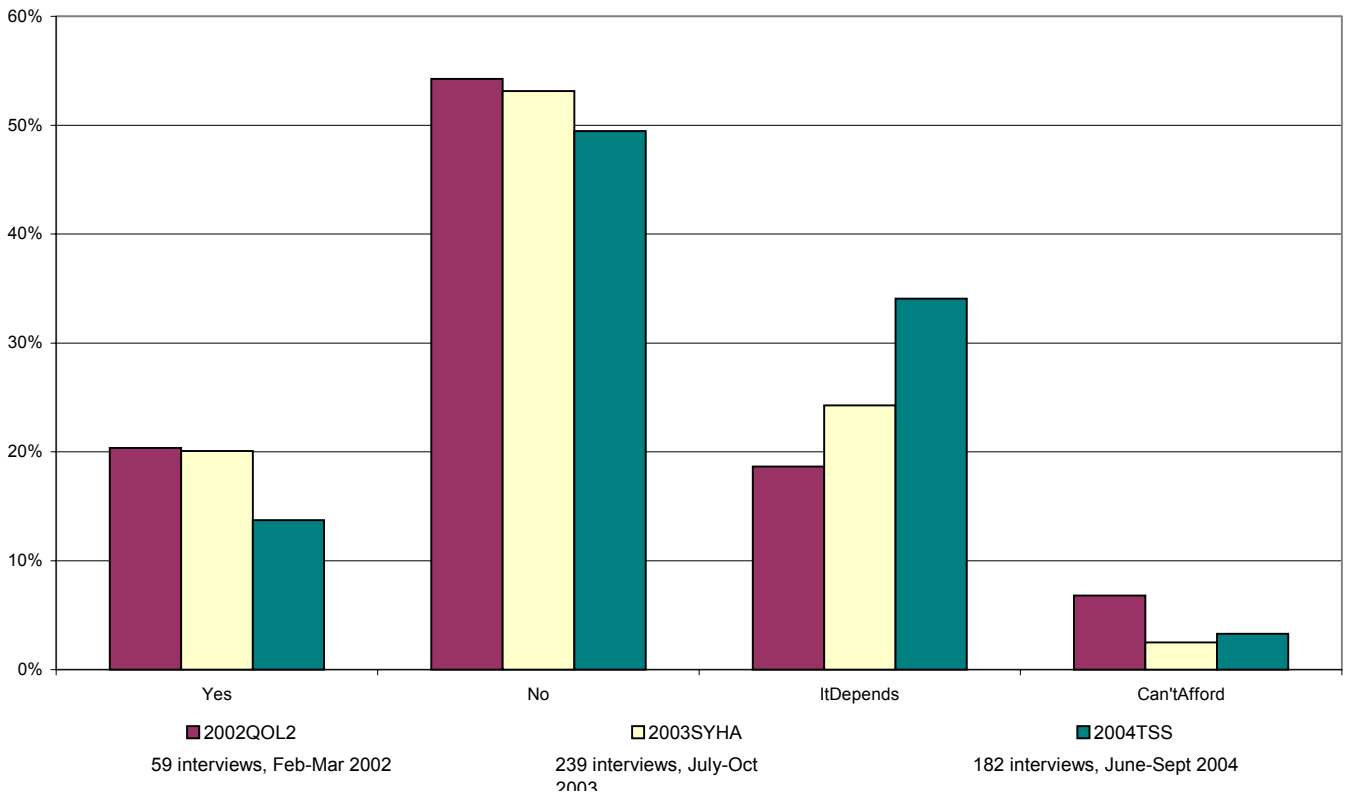
Other	2003SYHA		2004TSS	
	No.	%	No.	%
Yes	7	21%	6	55%
No	18	53%	3	27%
ItDepends	9	26%	2	18%
Can'tAfford	0	0%	0	0%
Total	34	100%	11	100%



Looking ahead, are you likely to move out of this area in the next 3 years?

All respondents

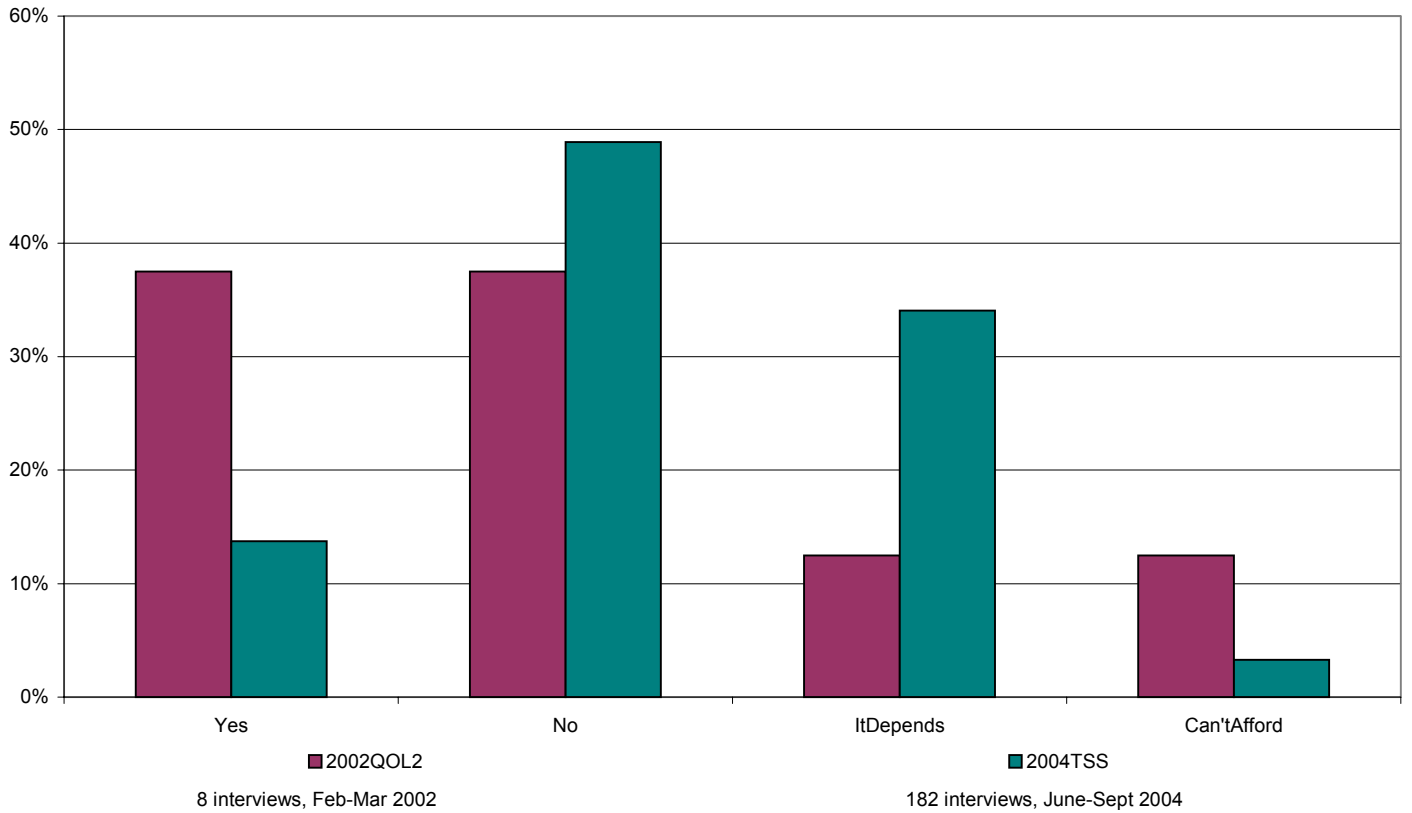
All	2002QOL2		2003SYHA		2004TSS	
	No.	%	No.	%	No.	%
Yes	12	20%	48	20%	25	14%
No	32	54%	127	53%	90	49%
ItDepends	11	19%	58	24%	62	34%
Can'tAfford	4	7%	6	3%	6	3%
Total	59	100%	239	100%	182	100%



Looking ahead, are you likely to move out of this area in the next 3 years?

Responses by geographical area - Tinsley

S9 1	2002QOL2		2004TSS	
	No.	%	No.	%
Yes	3	38%	25	14%
No	3	38%	90	49%
ItDepends	1	13%	62	34%
Can'tAfford	1	13%	6	3%
Total	8	100%	182	100%



Looking ahead, are you likely to move out of this area in the next 3 years?

Responses by geographical area - Darnall (Staniforth Road/Kettlebridge/Kashmir Gardens)

S9 3	2002QOL2		2003SYHA	
	No.	%	No.	%
Yes	0	0%	48	21%
No	8	89%	120	52%
ItDepends	1	11%	57	25%
Can'tAfford	0	0%	6	3%
Total	9	100%	231	100%

