

# City Centre, Park Hill & Netherthorpe Neighbourhood Health Trends 1997/2007

This profile presents a series of data items with comparison to Sheffield as a whole.  
The data presented in this leaflet has been downloaded from the Sheffield Health and Well-being Atlas,  
available from [www.sheffield.nhs.uk/healthdata/](http://www.sheffield.nhs.uk/healthdata/).

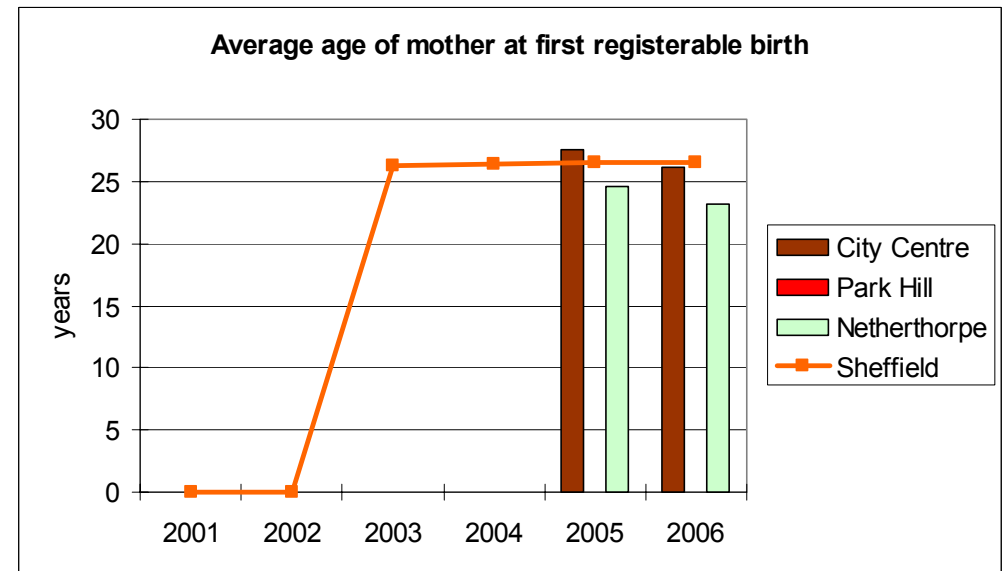
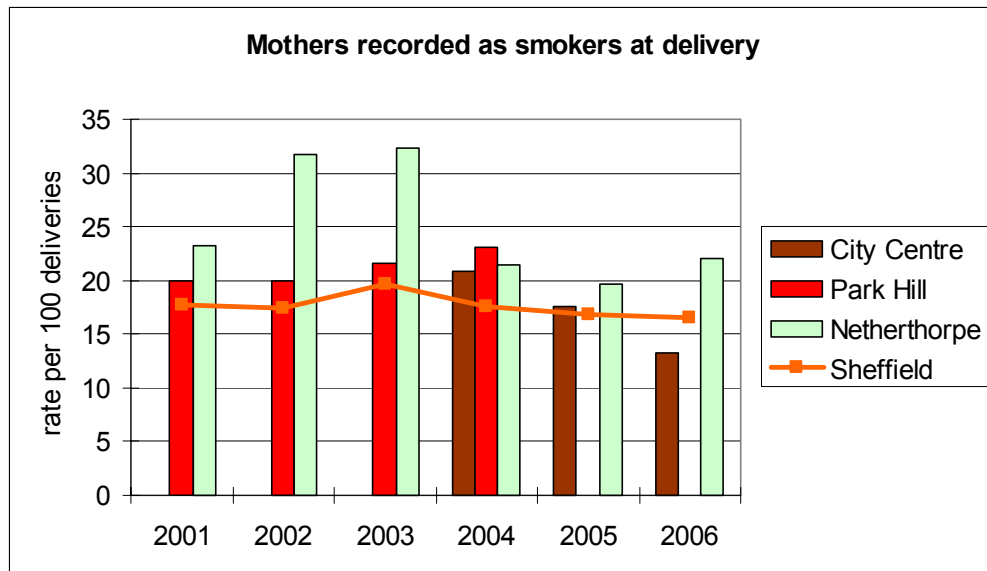
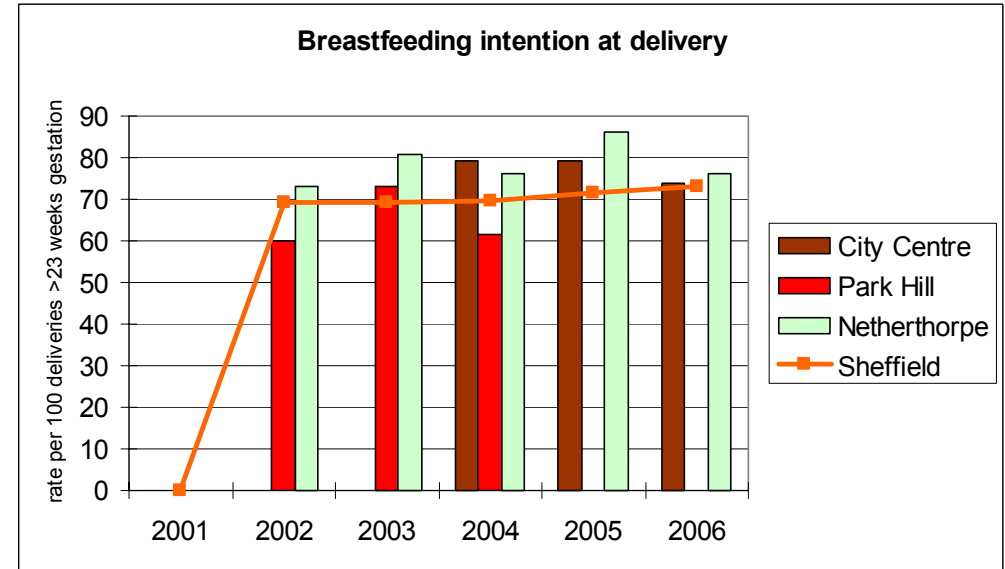
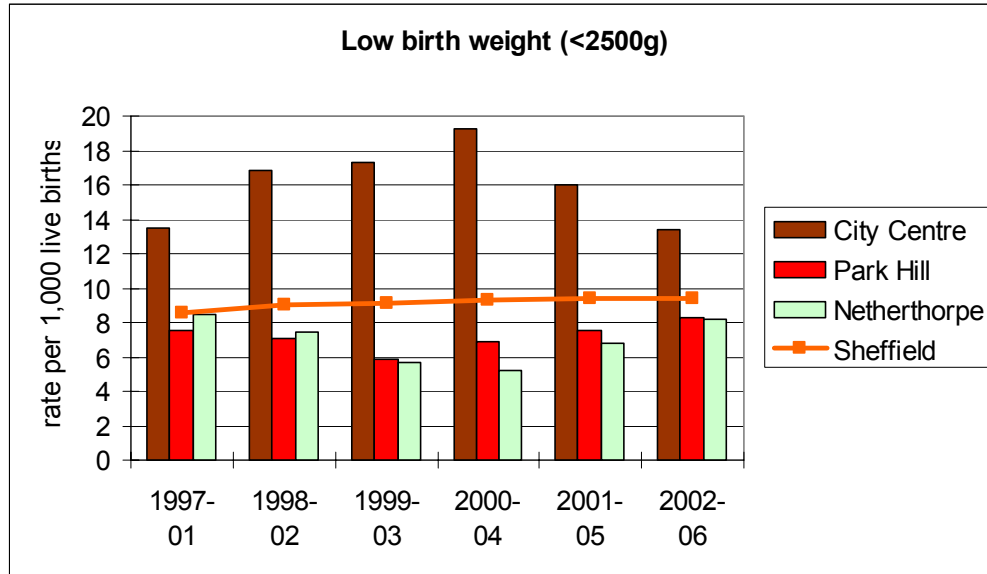


2007-2008  
Delivering Cleaner Air

Prepared by  
Barbara Rimmington  
**East End Quality of Life Initiative**  
10 Montgomery Terrace Road  
Sheffield S6 3BU  
Tel. 0114 2859931  
Fax 0114 2787173  
Email [barbara@sheffieldct.co.uk](mailto:barbara@sheffieldct.co.uk)

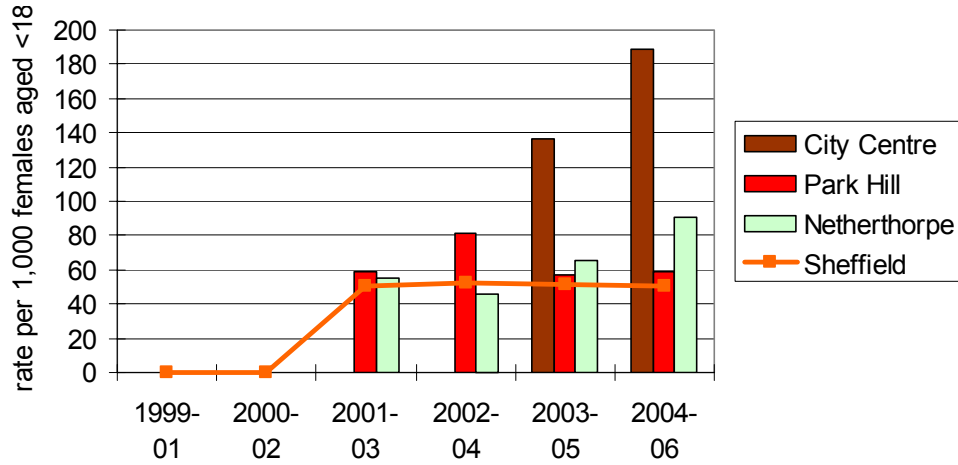
October 2007

## Births, Pregnancy and Infant Deaths

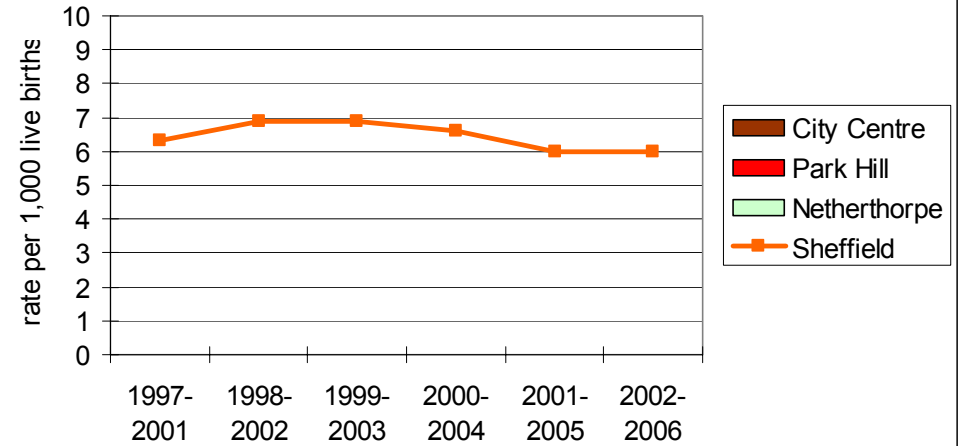


Data Source: Public Health Birth Files, Office for National Statistics, 2002-2006, except \* STHT PROTOS extract, 2006; Population Health Register extracts, 2002-2006.

**Conception rates aged <18**

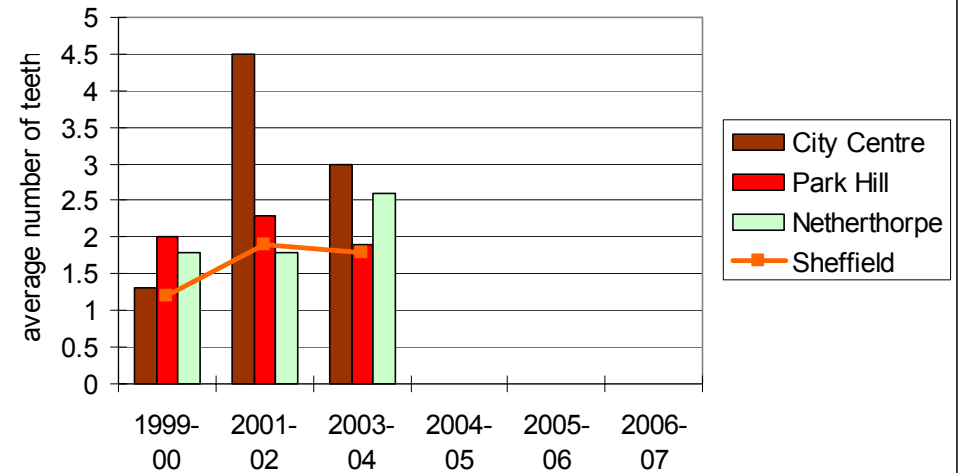


**Mortality Infant Deaths aged <1**

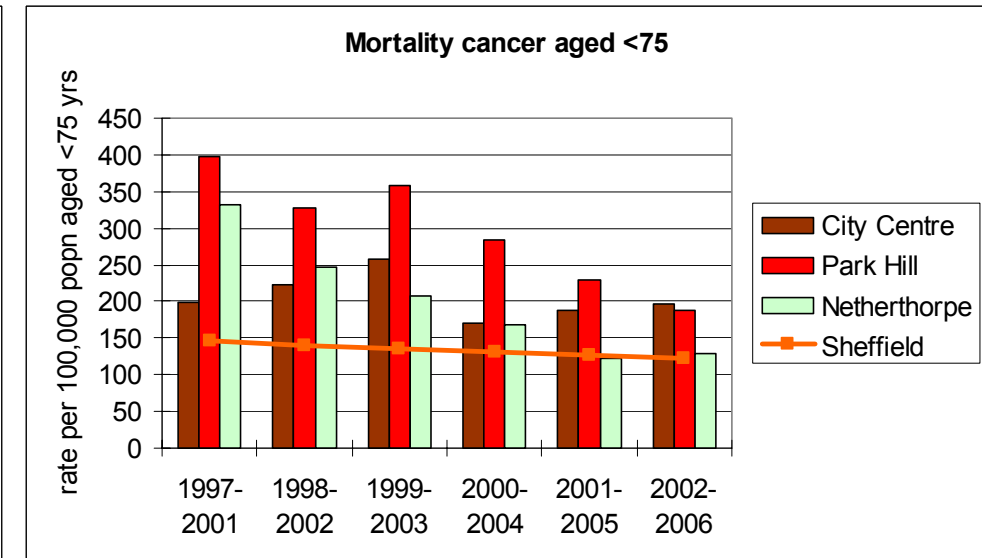
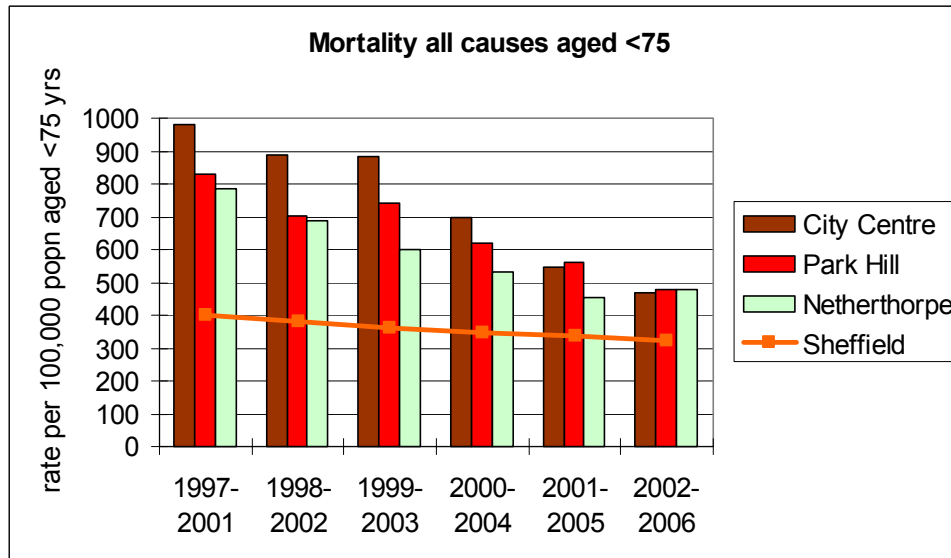
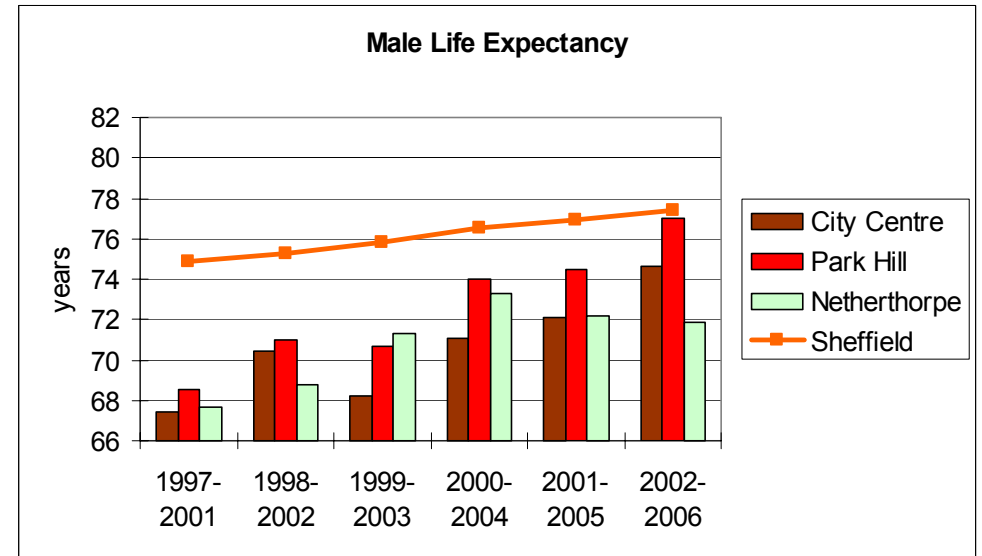
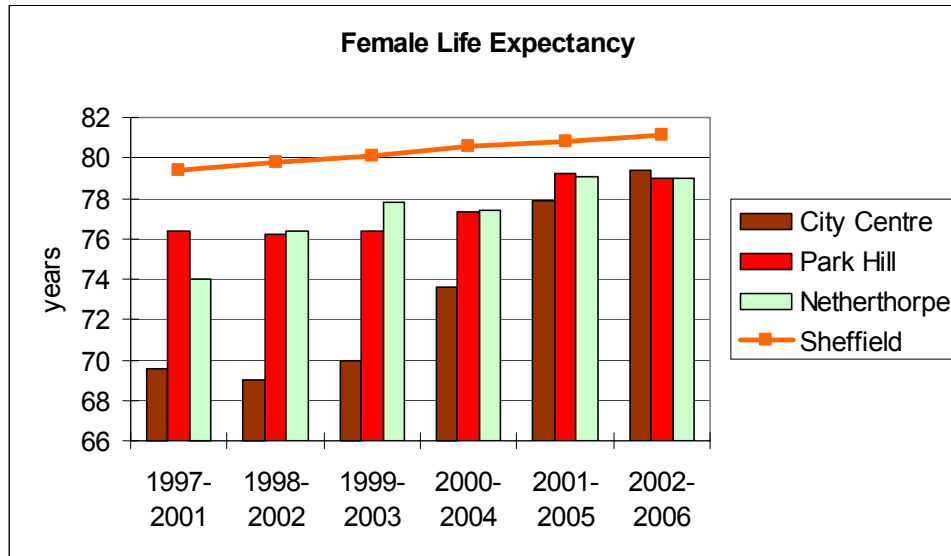


**Child Dental Health**

**Decayed, missing or filled teeth in children aged 5**



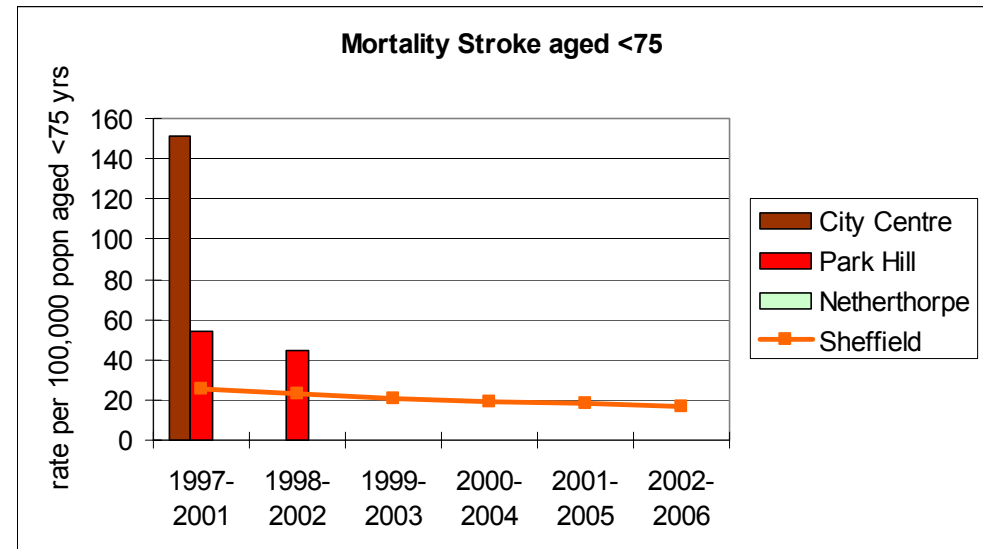
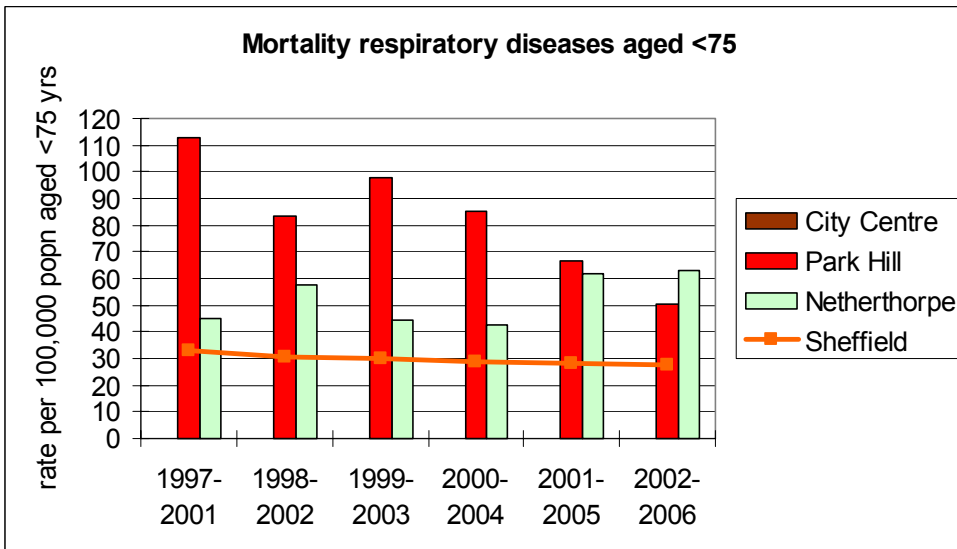
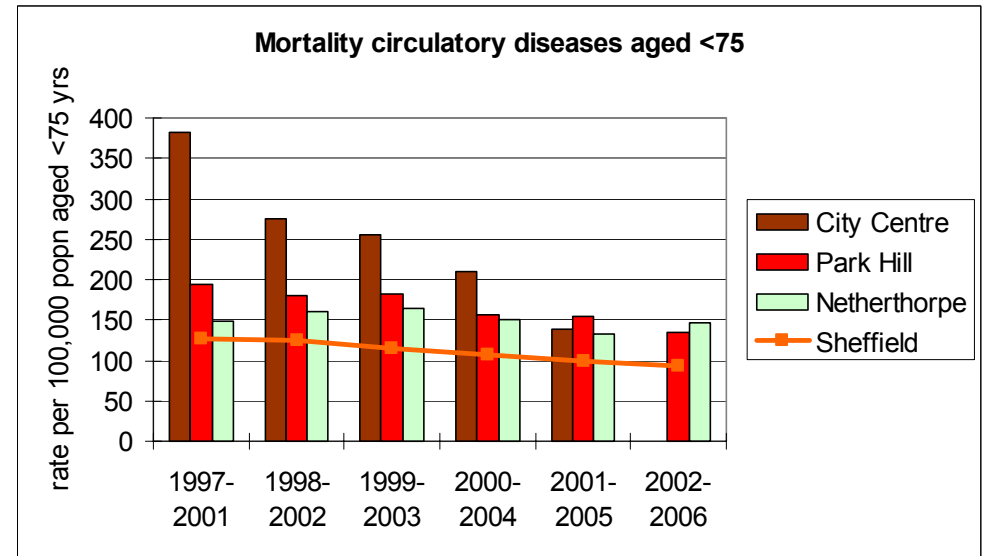
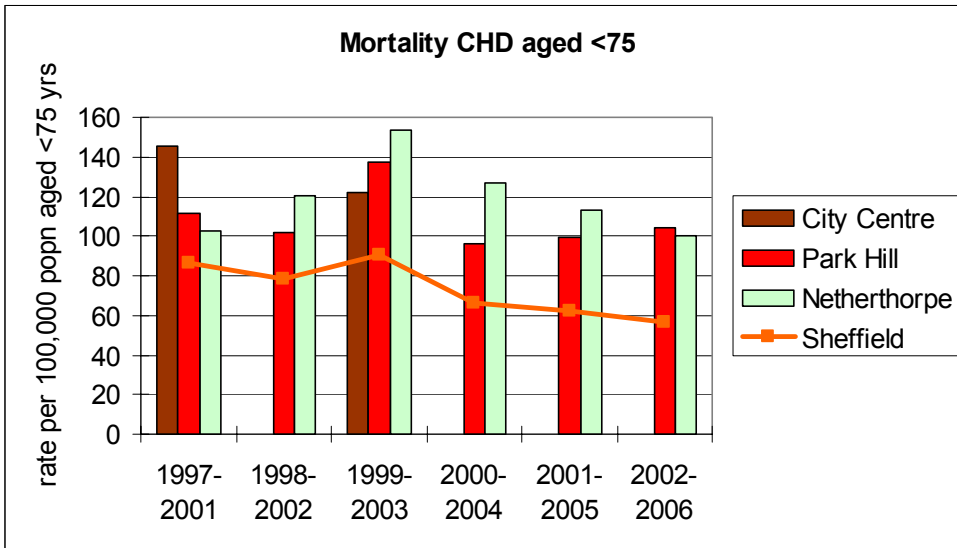
## Life Expectancy and Deaths



Data Source: Public Health Mortality Files, Office for National Statistics, 2002-2006; Population Health Register, 2002-2006.

Life Expectancy calculation based on a method calculated by the West Midlands Public Health Observatory.

# Deaths

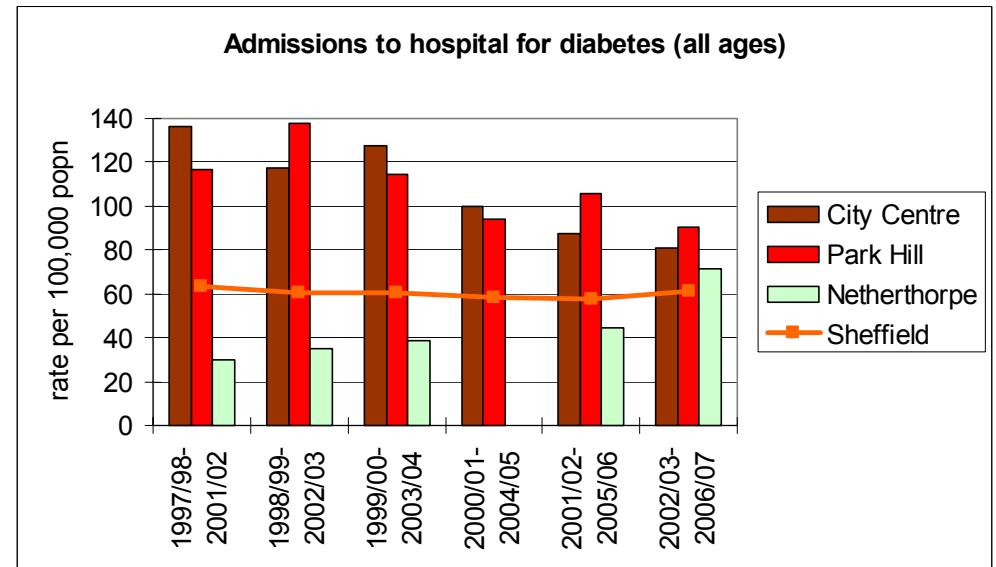
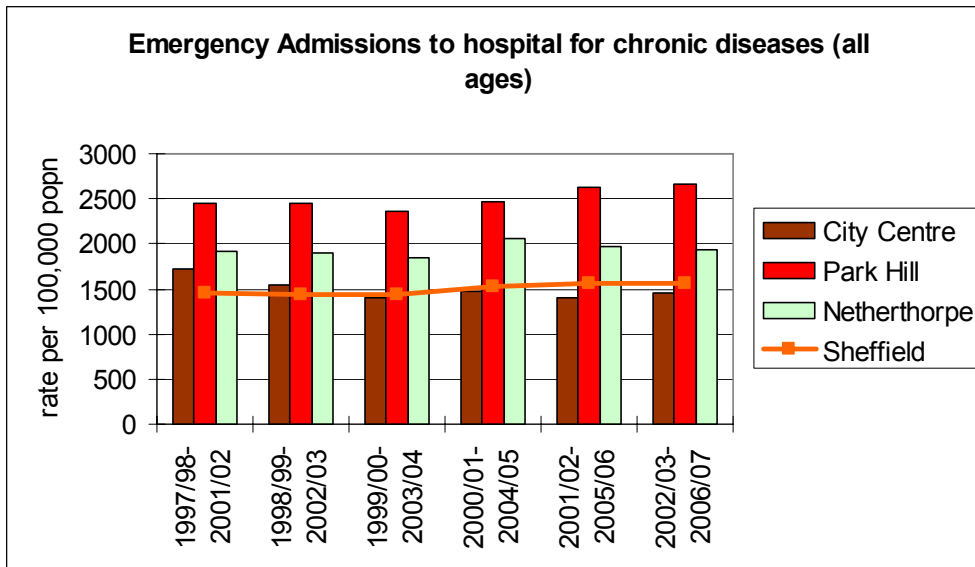
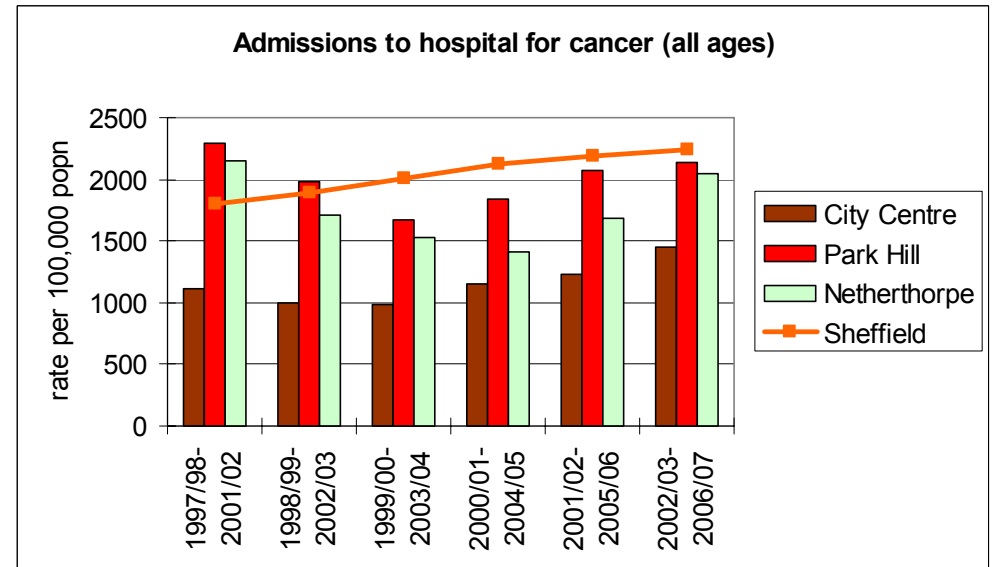
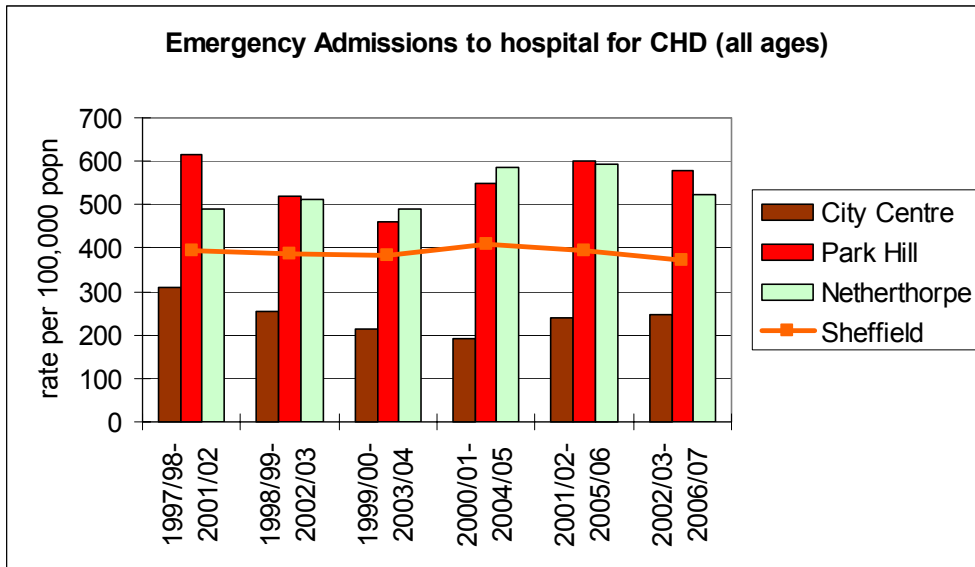


Data Source: Public Health Mortality Files, Office for National Statistics, 2002-2006; Population Health Register extracts, 2002-2006.

All mortality rates expressed as European Age Standardised rates per 100,000 population except infant deaths aged <1 year expressed as rate per 1,000 live births.

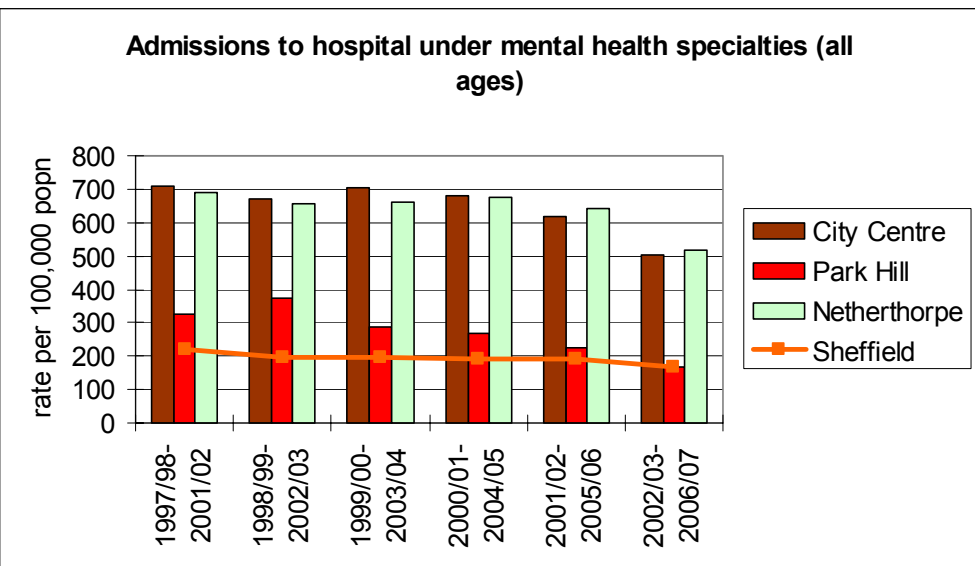
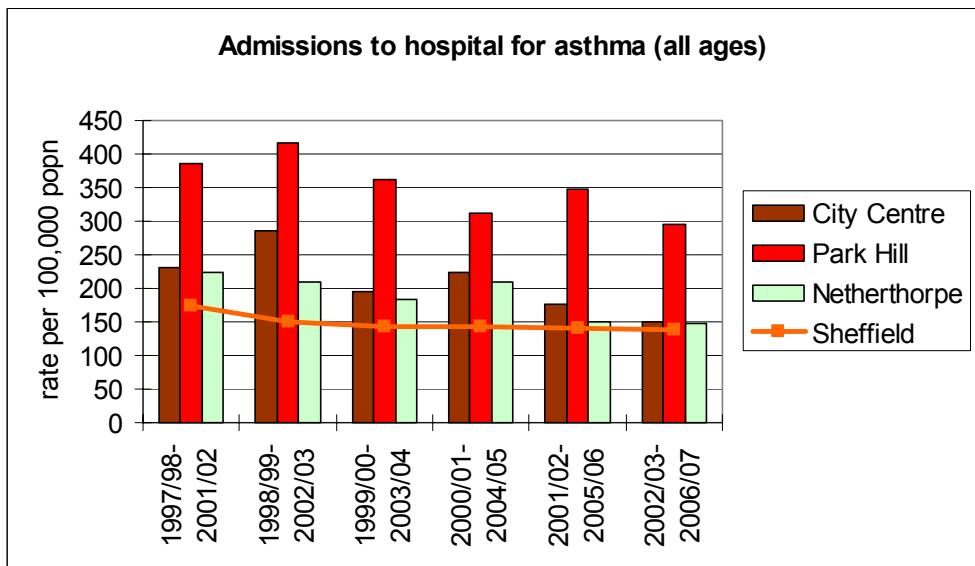
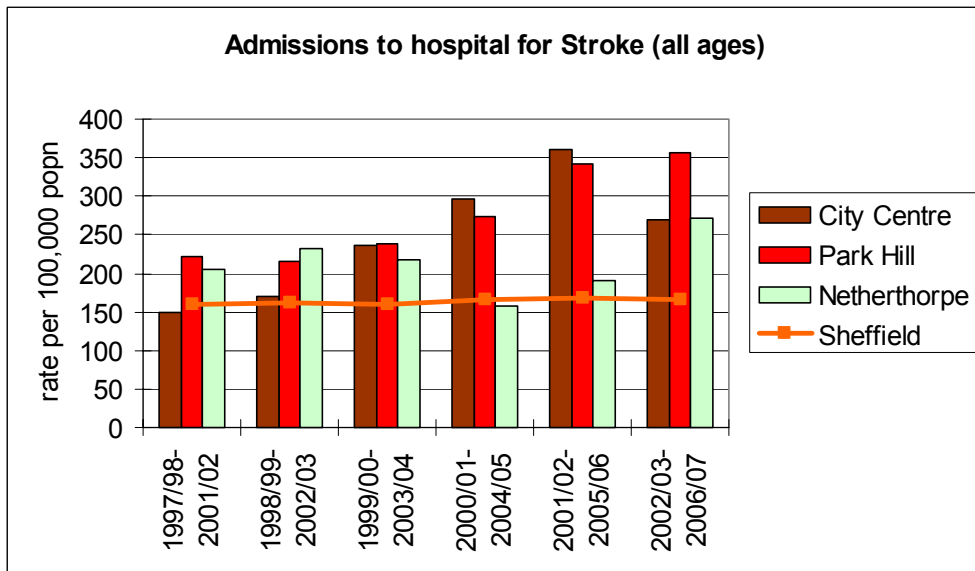
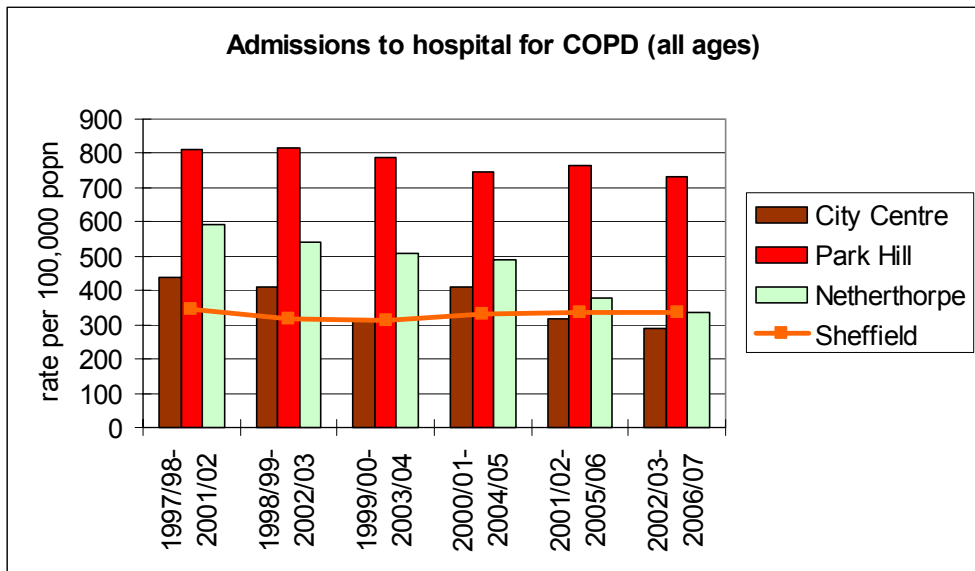
**Hospital Admission Rates - Emergency Admissions / A&E**

**Hospital Admission Rates - Other Admissions**



Data Source: Inpatient Minimum Data Sets, 2002/03-2006/07; Population Health Register extracts, 2002/03-2006/07.

## Hospital Admission Rates - Other Admissions



Data Source: Inpatient Minimum Data Sets, 2006/07; Population Health Register extracts, 2006/07.

All rates expressed as European Age Standardised rates per 100,000 population except emergency admissions aged <18yrs expressed as rate per 1,000 population.

## Population Profile

Age	City Centre		Park Hill		Netherthorpe		Sheffield	
	#	Rate	#	Rate	#	Rate	#	Rate
0-4yrs	111	2.1%	60	3%	188	6.3%	29,998	5.5%
5-14yrs	106	2.1%	195	9.8%	285	9.5%	61,841	11.3%
15-24yrs	2,646	51.2%	309	15.6%	528	17.6%	87,528	16%
25-44yrs	1,928	37.3%	688	34.7%	1,057	35.2%	160,130	29.2%
45-64yrs	297	5.7%	419	21.1%	529	17.6%	123,875	22.6%
65-74yrs	42	0.8%	167	8.4%	205	6.8%	43,412	7.9%
75-84yrs	27	0.5%	112	5.6%	139	4.6%	29,422	5.4%
85yrs+	12	0.2%	35	1.8%	73	2.4%	11,425	2.1%
<b>Total Population</b>	<b>5,169</b>		<b>1,985</b>		<b>3,004</b>		<b>547,631</b>	
<b>Data Source: Population Health Register 2006.</b>								

Ethnic Group	City Centre		Park Hill		Netherthorpe		Sheffield	
	#	Rate	#	Rate	#	Rate	#	Rate
White	1,862	69.4%	1,893	82.8%	2,127	76%	468,180	91.2%
Mixed	83	3.1%	89	3.9%	116	4.1%	8,308	1.6%
Asian / Asian British	312	11.6%	95	4.2%	226	8.1%	23,366	4.6%
Black / Black British	181	6.7%	181	7.9%	177	6.3%	9,153	1.8%
Chinese or Other	246	9.2%	29	1.3%	153	5.5%	4,257	0.8%
<b>Total Population</b>	<b>2,684</b>		<b>2,287</b>		<b>2,799</b>		<b>513,264</b>	
<b>Data Source: 2001 Census, Office for National Statistics.</b>								