

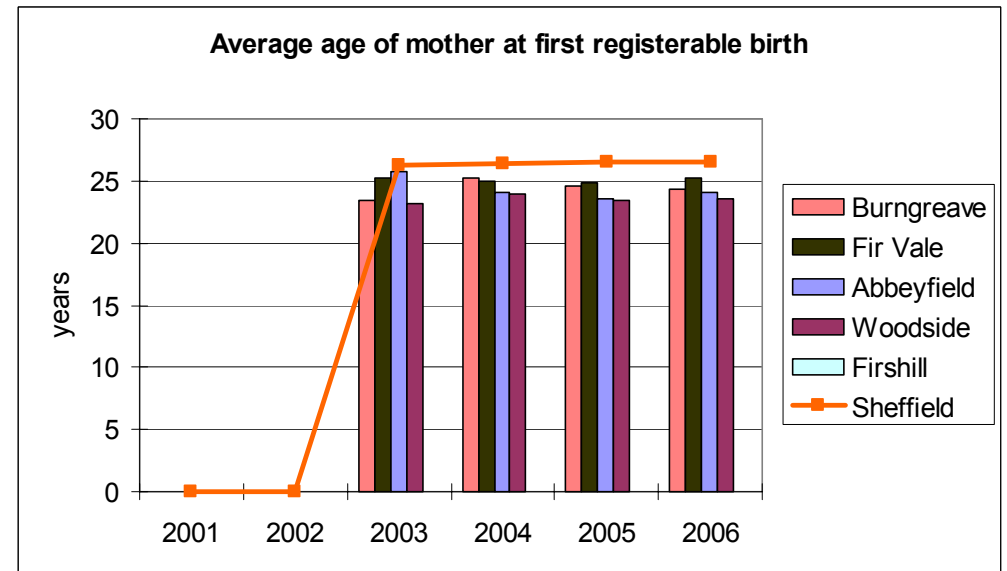
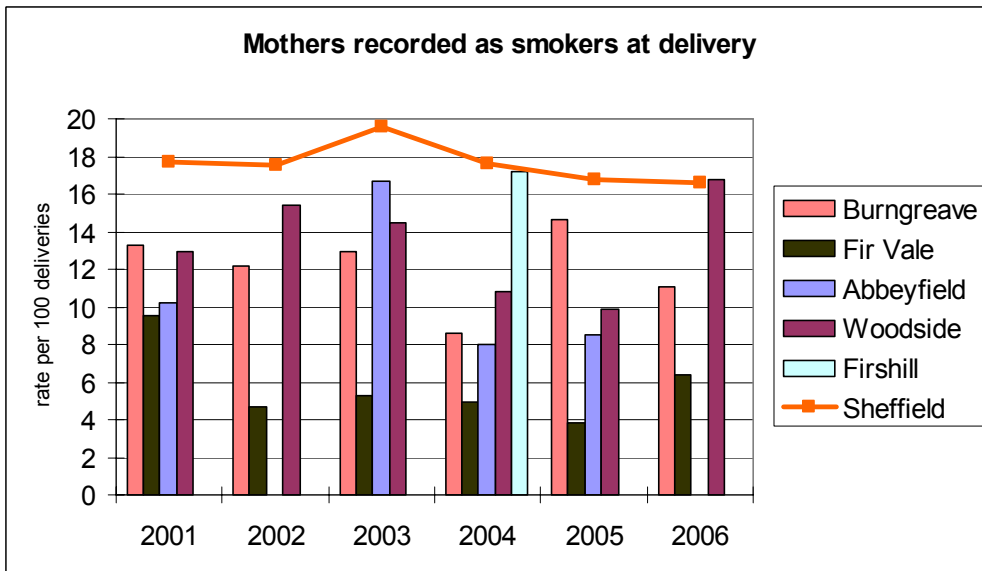
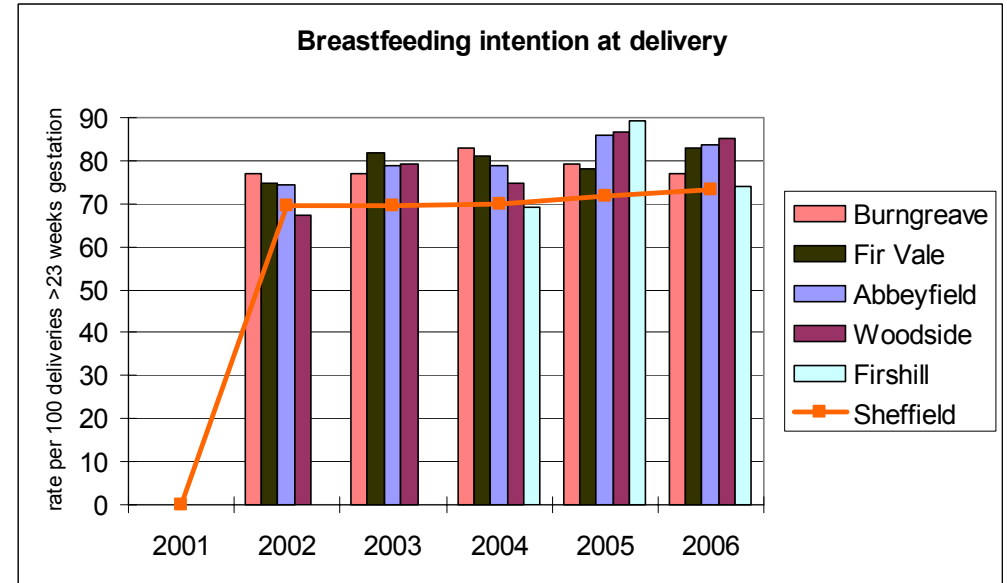
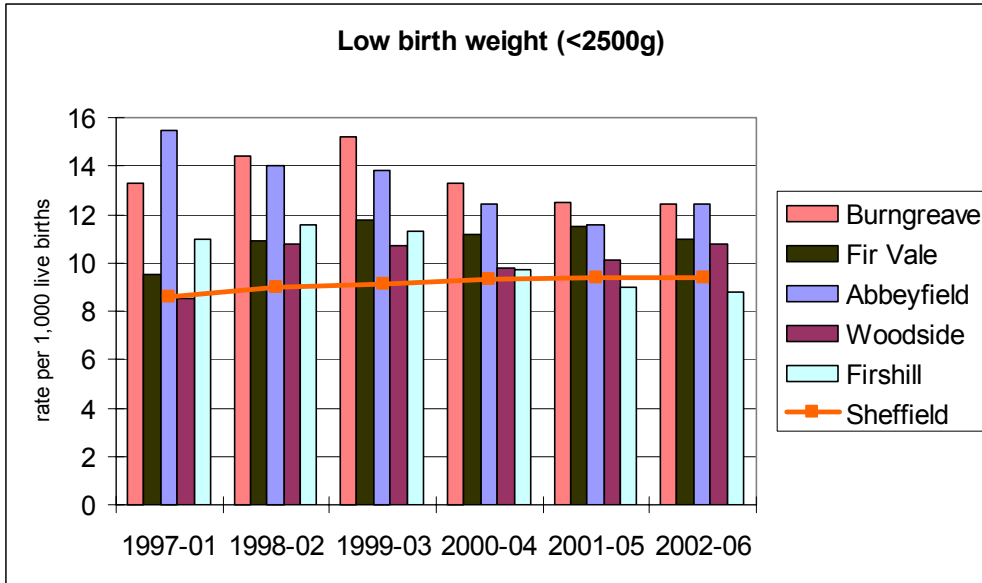
Burngreave, Firvale, Abbeyfield, Woodside & Firvale Neighbourhood Health Trends 1997/2007

This profile presents a series of data items with comparison to Sheffield as a whole.
The data presented in this leaflet has been downloaded from the Sheffield Health and Well-being Atlas, available from www.sheffield.nhs.uk/healthdata/.

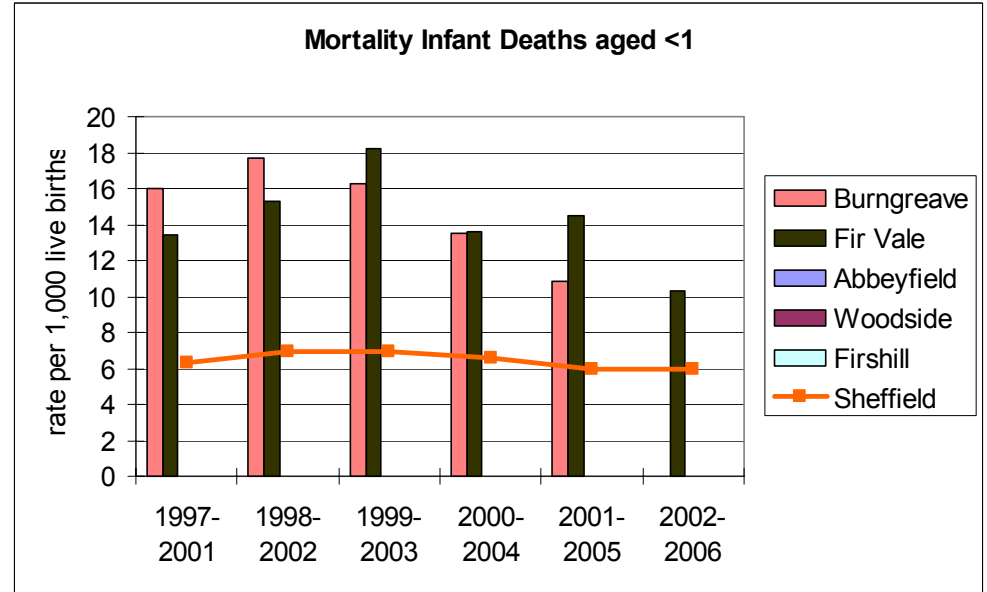
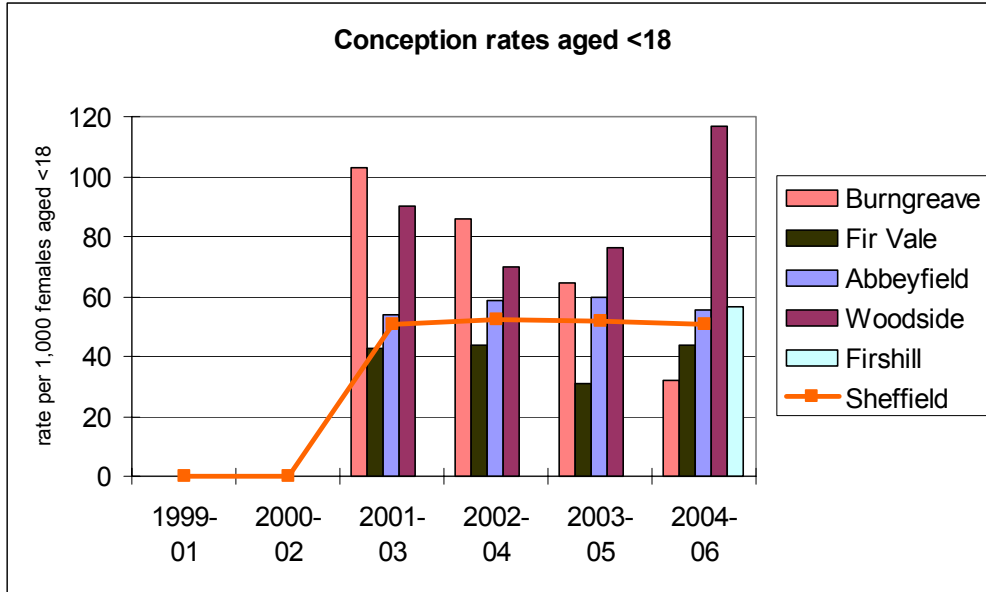


Prepared by
Barbara Rimmington
East End Quality of Life Initiative
10 Montgomery Terrace Road
Sheffield S6 3BU
Tel. 0114 2859931
Fax 0114 2787173
Email barbara@sheffieldct.co.uk September 2007

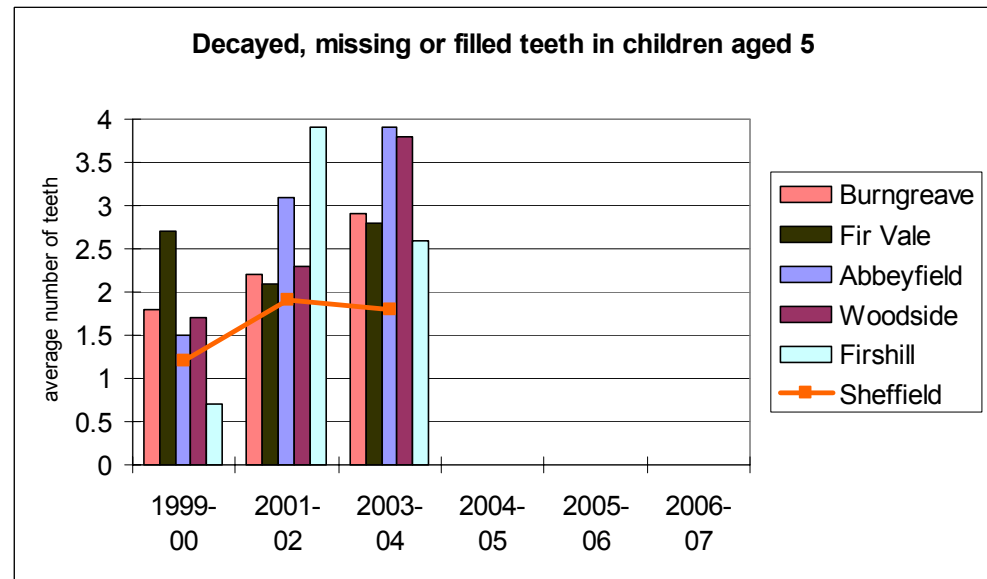
Births, Pregnancy and Infant Deaths



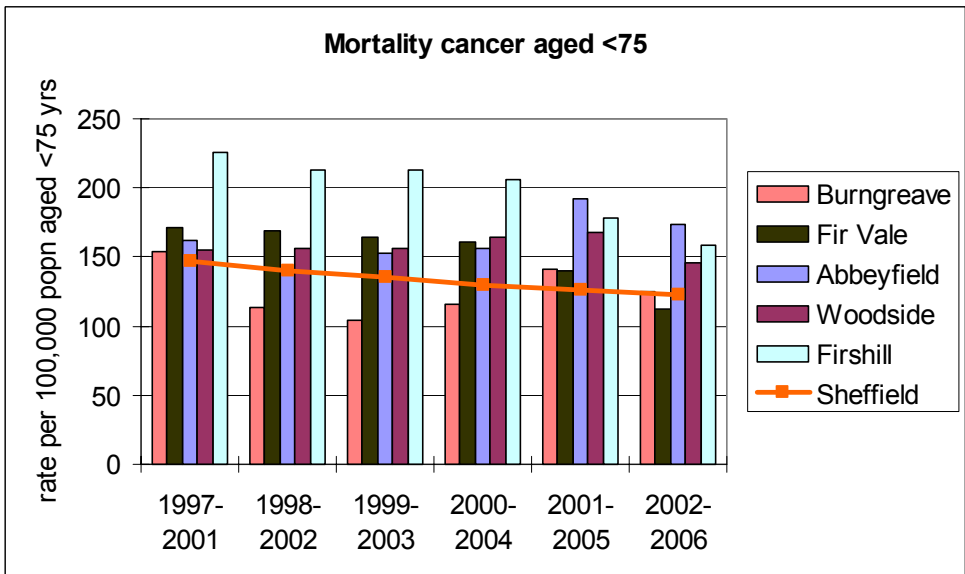
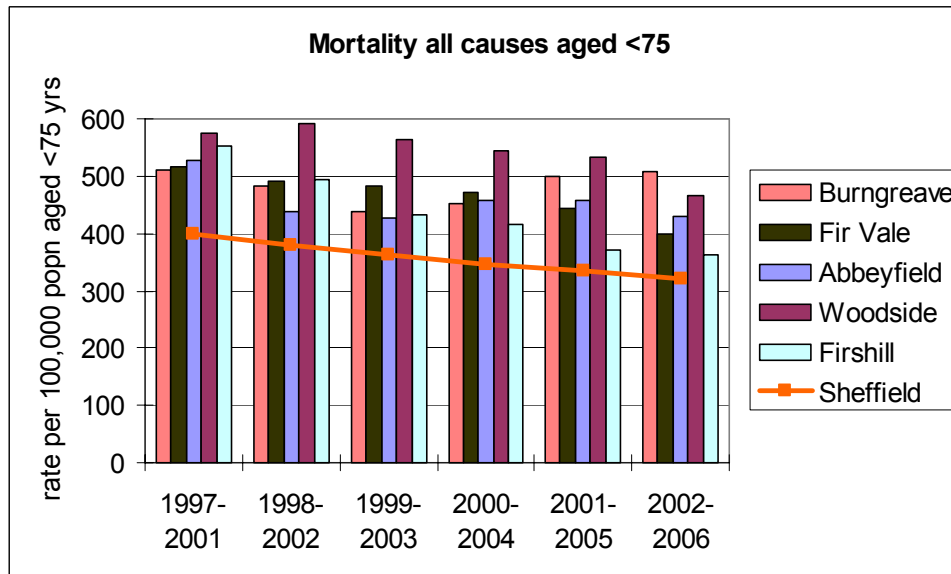
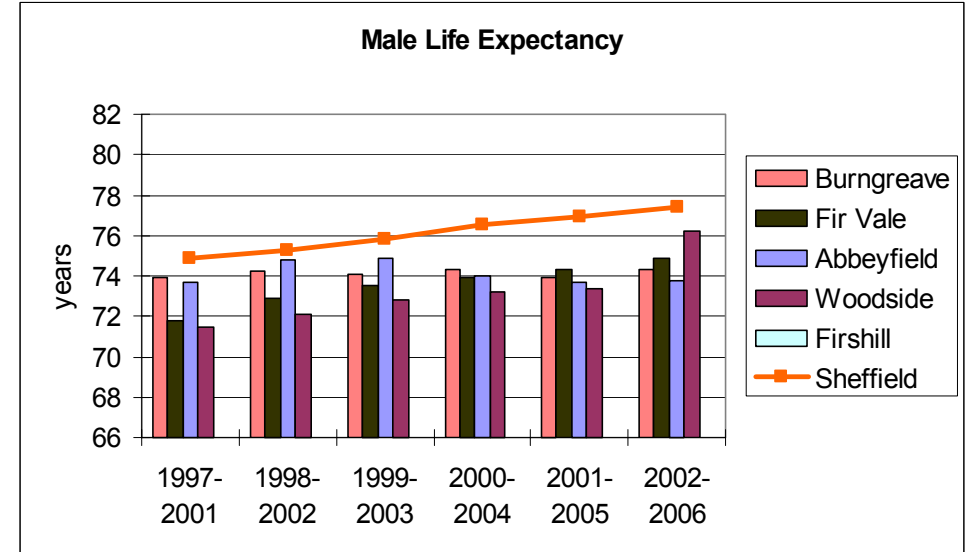
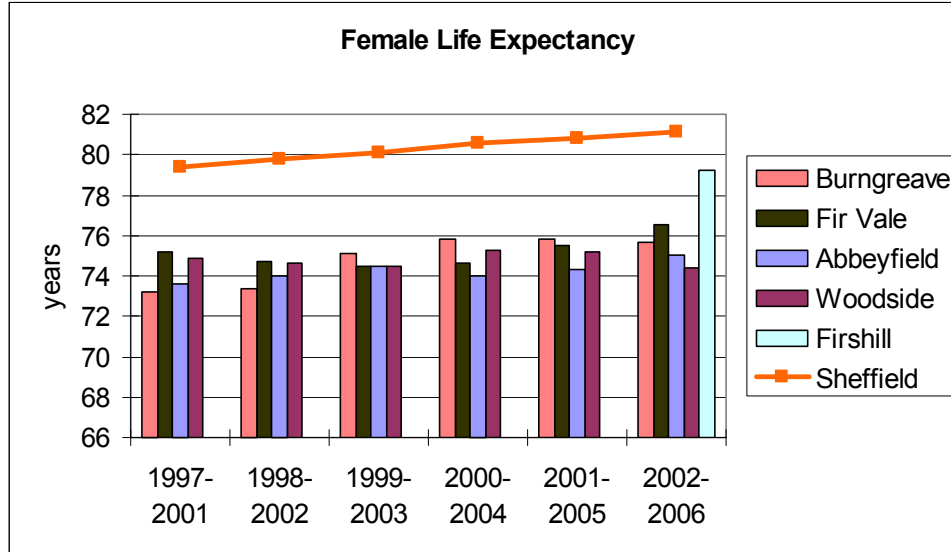
Data Source: Public Health Birth Files, Office for National Statistics, 2002-2006, except * STHT PROTOS extract, 2006; Population Health Register extracts, 2002-2006.



Child Dental Health



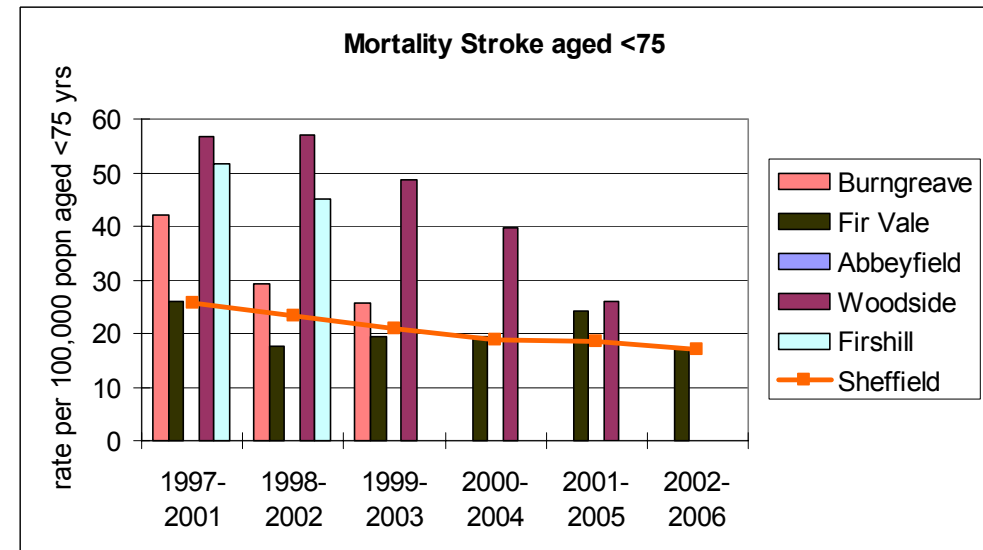
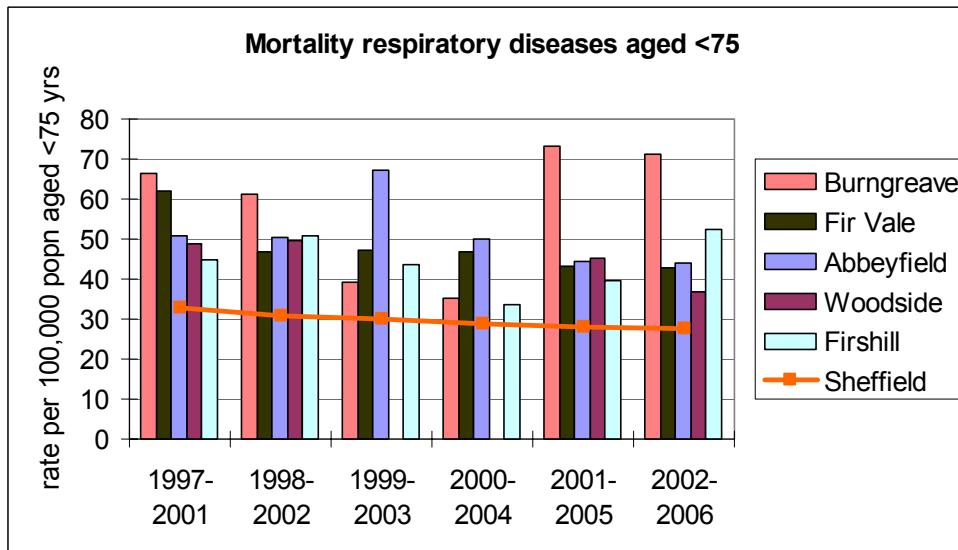
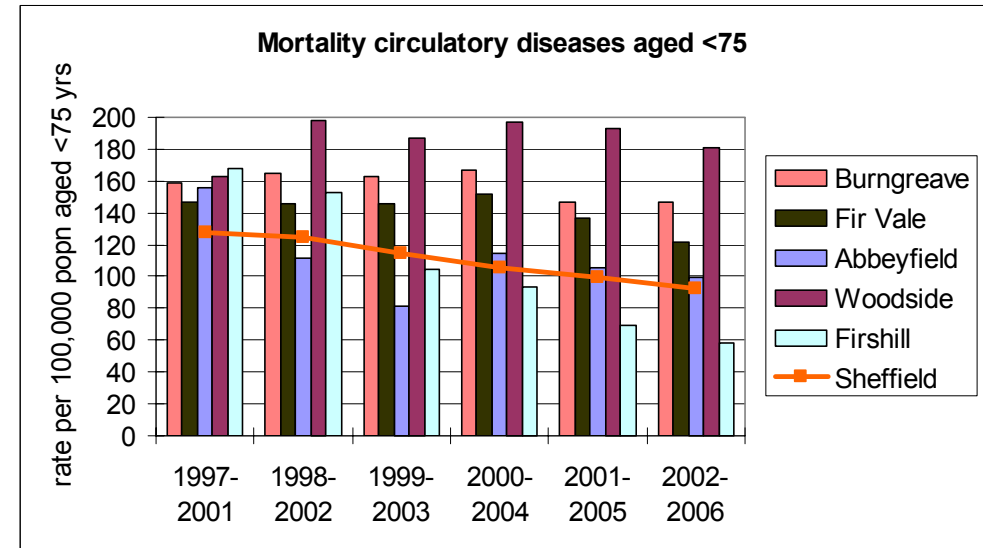
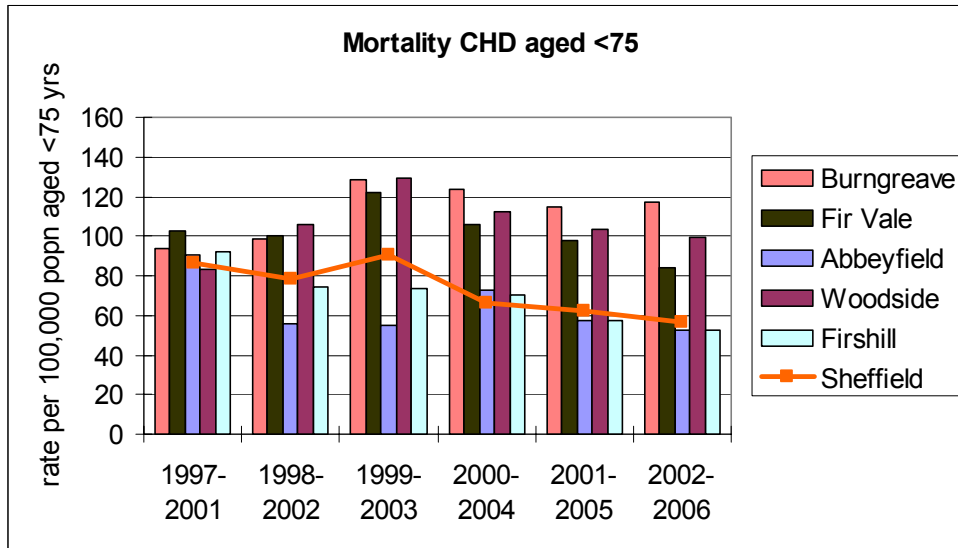
Life Expectancy and Deaths



Data Source: Public Health Mortality Files, Office for National Statistics, 2002-2006; Population Health Register, 2002-2006.

Life Expectancy calculation based on a method calculated by the West Midlands Public Health Observatory.

Deaths

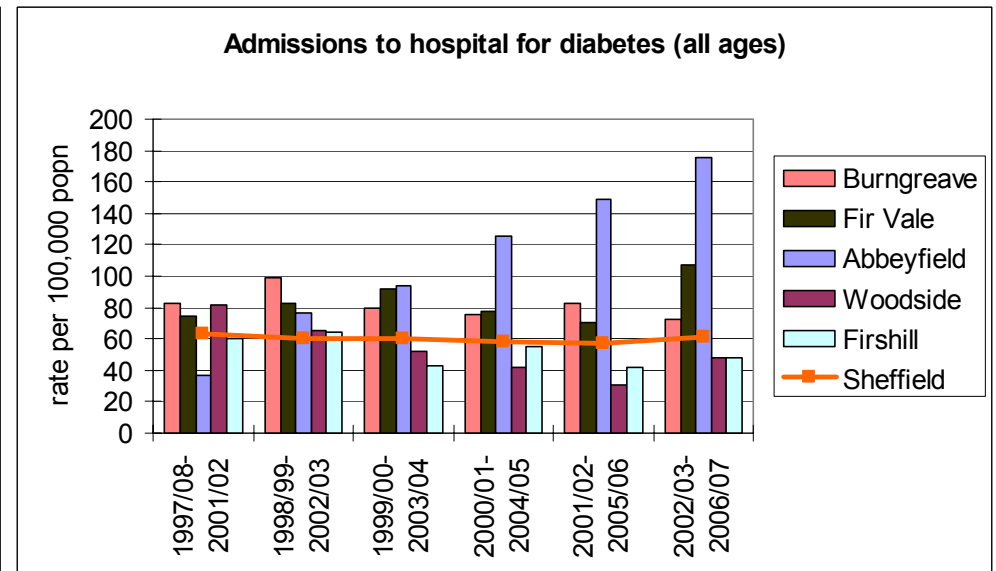
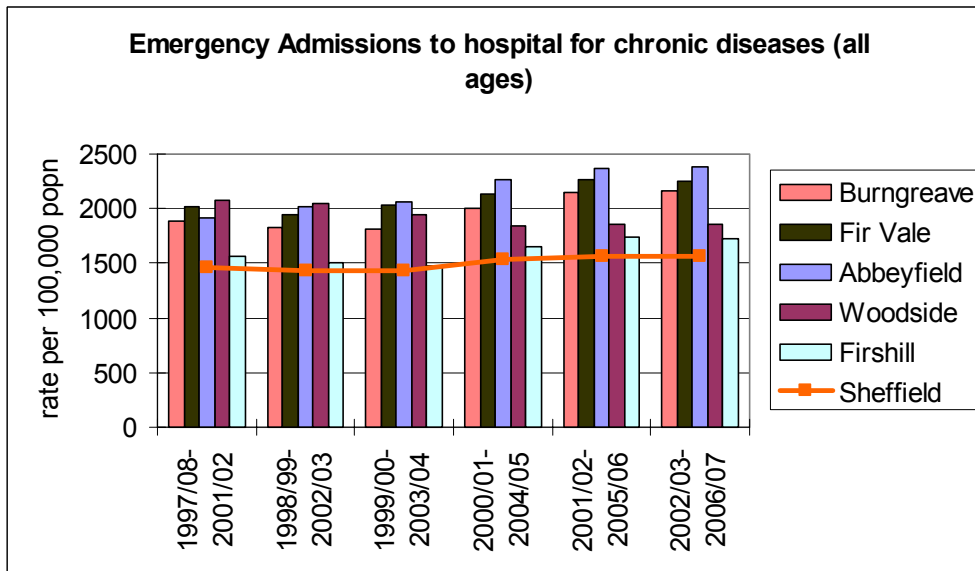
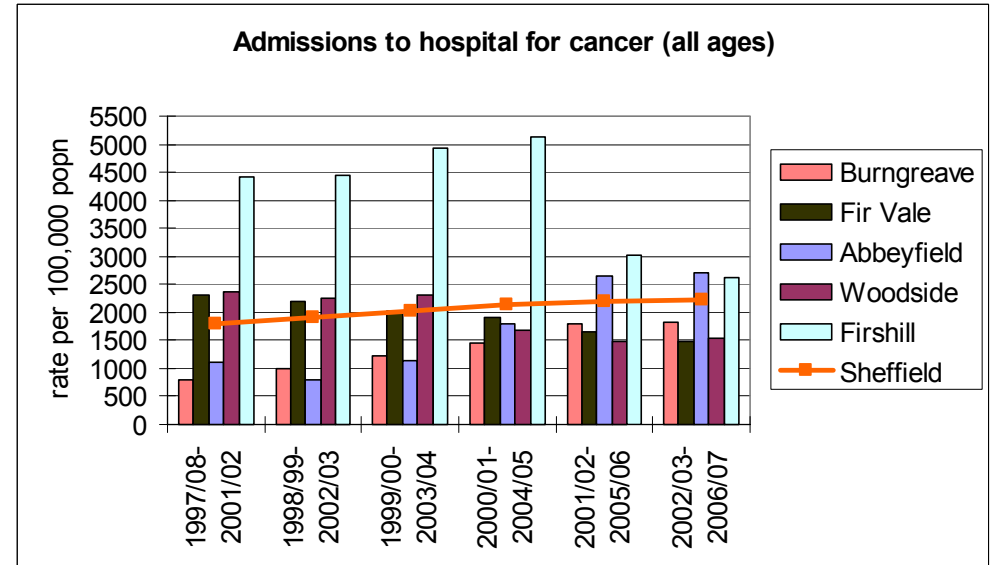
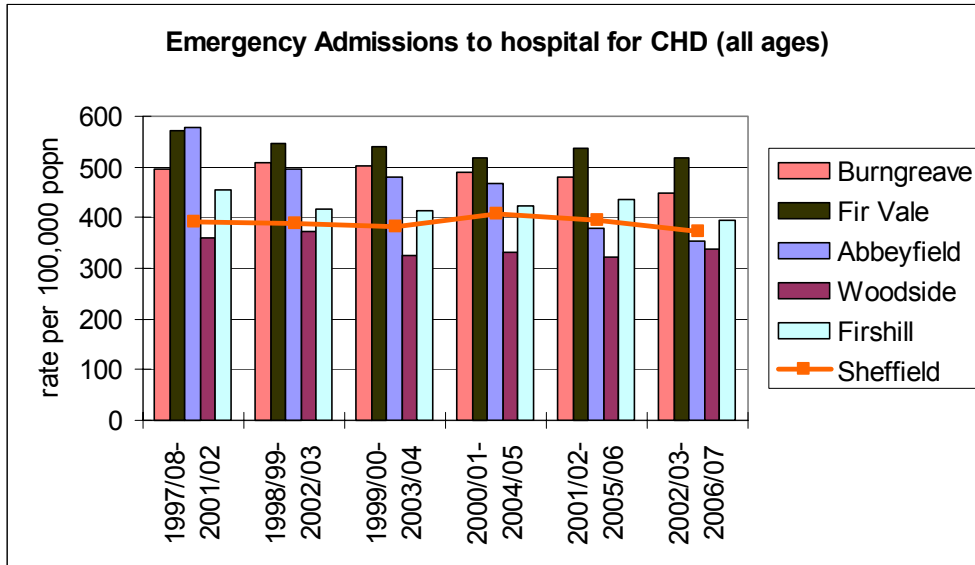


Data Source: Public Health Mortality Files, Office for National Statistics, 2002-2006; Population Health Register extracts, 2002-2006.

All mortality rates expressed as European Age Standardised rates per 100,000 population except infant deaths aged <1 year expressed as rate per 1,000 live births.

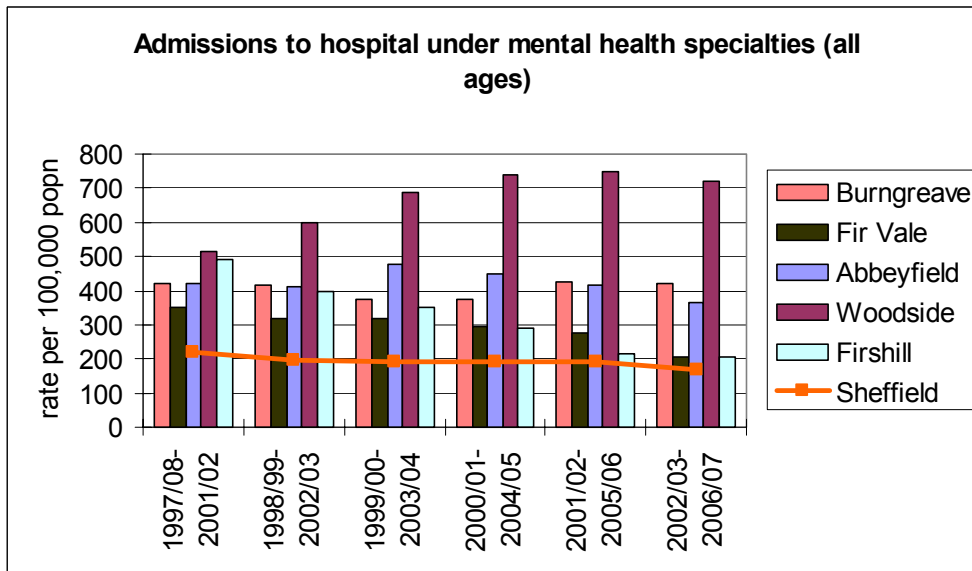
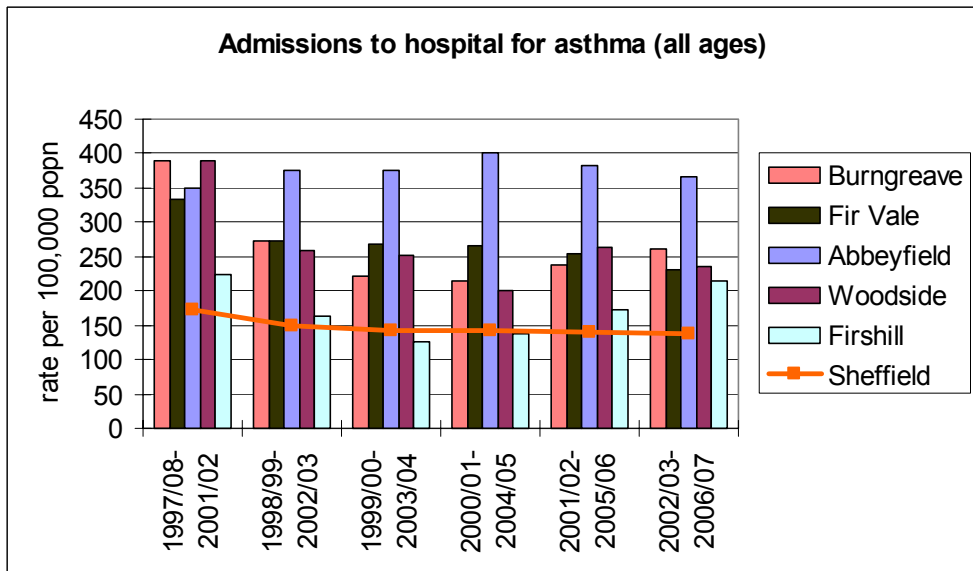
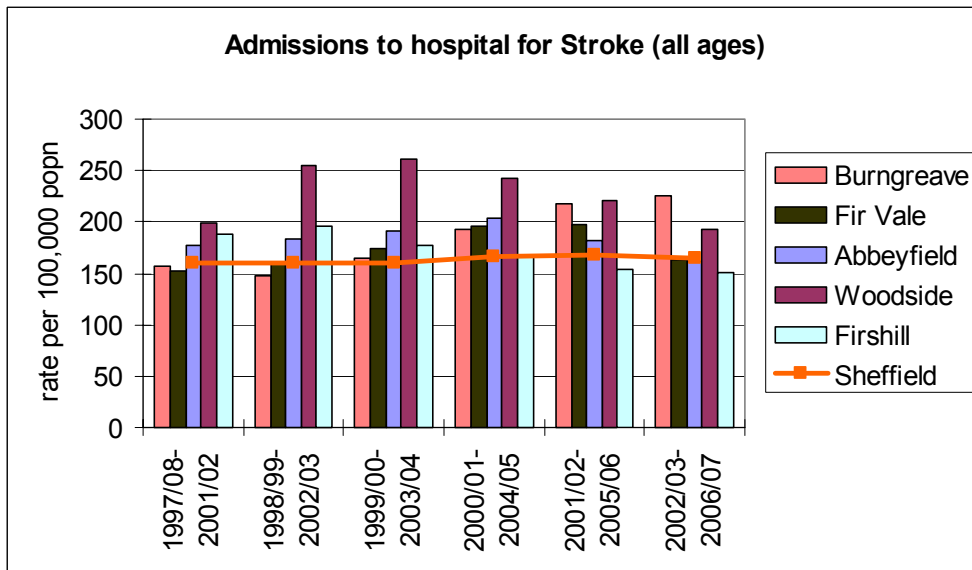
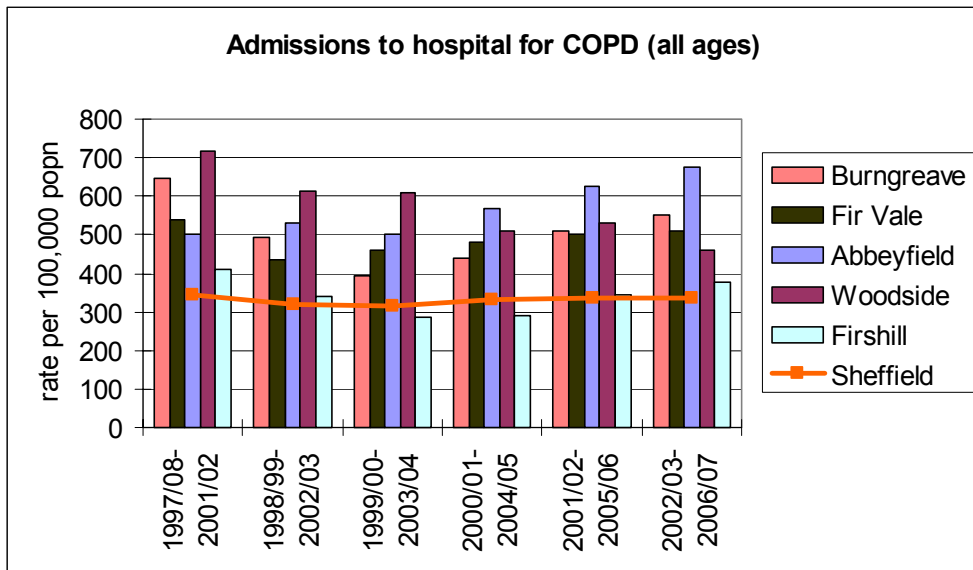
Hospital Admission Rates - Emergency Admissions / A&E

Hospital Admission Rates - Other Admissions



Data Source: Inpatient Minimum Data Sets, 2002/03-2006/07; Population Health Register extracts, 2002/03-2006/07.

Hospital Admission Rates - Other Admissions



Data Source: Inpatient Minimum Data Sets, 2006/07; Population Health Register extracts, 2006/07.

All rates expressed as European Age Standardised rates per 100,000 population except emergency admissions aged <18yrs expressed as rate per 1,000 population.

Population Profile

Age	Burngreave		Fir Vale		Abbeyfield		Woodside		Firshill		Sheffield	
	#	Rate	#	Rate	#	Rate	#	Rate	#	Rate	#	Rate
0-4yrs	528	9.9%	879	9.5%	306	8.9%	390	8.9%	108	5.4%	29,998	5.5%
5-14yrs	775	14.5%	1,376	14.9%	471	13.6%	598	13.6%	185	9.2%	61,841	11.3%
15-24yrs	814	15.2%	1,374	14.9%	538	15.6%	796	18.1%	205	10.2%	87,528	16%
25-44yrs	1,638	30.6%	3,211	34.8%	1,131	32.7%	1,558	35.5%	570	28.3%	160,130	29.2%
45-64yrs	930	17.4%	1,407	15.2%	603	17.5%	612	13.9%	446	22.1%	123,875	22.6%
65-74yrs	377	7%	515	5.6%	188	5.4%	214	4.9%	241	12%	43,412	7.9%
75-84yrs	225	4.2%	329	3.6%	135	3.9%	161	3.7%	166	8.2%	29,422	5.4%
85yrs+	72	1.3%	138	1.5%	82	2.4%	59	1.3%	94	4.7%	11,425	2.1%
Total Population	5,359		9,229		3,454		4,388		2,015		547,631	
Data Source: Population Health Register 2006.												

Ethnic Group	Burngreave		Fir Vale		Abbeyfield		Woodside		Firshill		Sheffield	
	#	Rate	#	Rate	#	Rate	#	Rate	#	Rate	#	Rate
White	2,208	57.4%	3,857	52%	1,350	48%	1,623	52.7%	1,569	84.7%	468,180	91.2%
Mixed	207	5.4%	259	3.5%	108	3.8%	234	7.6%	62	3.3%	8,308	1.6%
Asian / Asian British	768	20%	2,762	37.3%	1,058	37.6%	529	17.2%	107	5.8%	23,366	4.6%
Black / Black British	583	15.2%	374	5%	260	9.2%	643	20.9%	93	5%	9,153	1.8%
Chinese or Other	78	2%	162	2.2%	35	1.2%	49	1.6%	22	1.2%	4,257	0.8%
Total Population	3,844		7,414		2,811		3,078		1,853		513,264	
Data Source: 2001 Census, Office for National Statistics.												